



TIMBER SALE MAP

54 - 002

2023

This information provided by authority of Part 525, 1994 PA 451, as amended.

Forest Management Unit Atlanta Management Unit		County Presque Isle	Mapped By Coy	Date 04/07/2023	Page 1	of 2
Township 33N	Range 02E & 03E	Section(s) and Subdivision(s) 23- SESE 25- SWNW,SW,SWSE 26- N1/2NE,SENE,SE 35- NWNE 30- E1/2SE			1:15,840	

Cover Type

A = Aspen	J = Jack Pine	O = Oak	U = Upland Brush
B = Paper Birch	K = Rock	P = Lowland Poplar	UM = Upland Mix Forest
C = Cedar	L = Lowland Brush	Q = Mixed Swamp Conifer	V = Bog or Marsh
D = Tread Bog	LM = Lowland Mix Forest	R = Red Pine	W = White Pine
E = Swamp Hardwoods	M = Maple, Beech, Birch	S = Black Spruce	X = Non Stocked
F = Spruce/Fir	MC = Mixed Conifer	T = Tamarack	Y = Sand
G = Grass	MD = Mixed Deciduous		Z = Water
H = Hemlock	N = Marsh		

Density

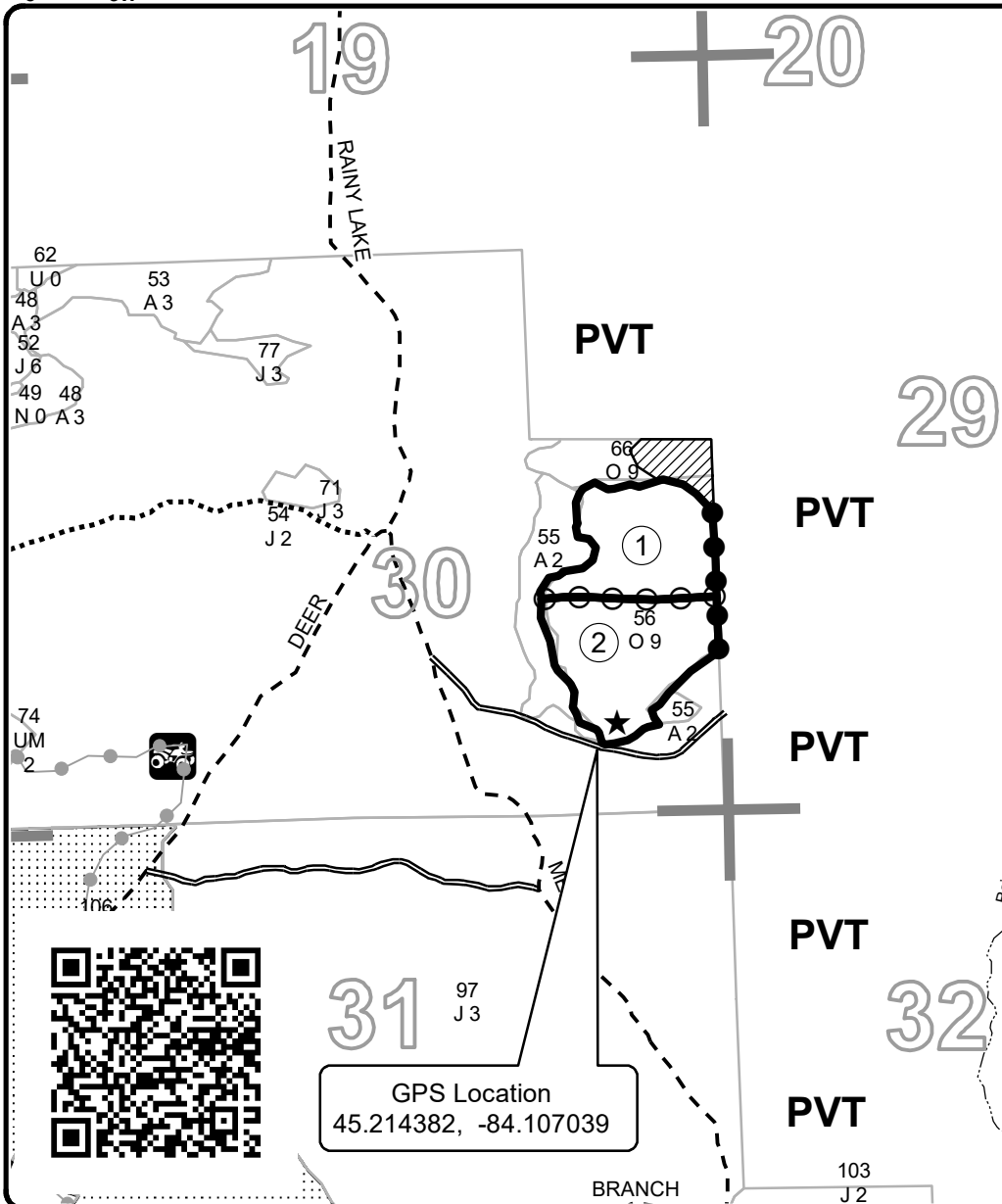
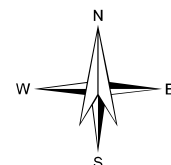
0 = Non Stocked	5 = Pole Timber Medium
1 = Seedling Sapling Poor	6 = Pole Timber Well
2 = Seedling Sapling Medium	7 = Saw Timber Poor
3 = Seedling Sapling Well	8 = Saw Timber Medium
4 = Pole Timber Poor	9 = Saw Timber Well

PU	Acres	PU	Acres
1	17.6	7	20.0
2	20.3	8	4.5
3	18.8	9	7.1
4	18.7	10	27.6
5	23.7		
6	9.7		

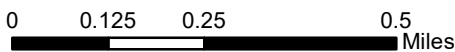
Spring Lk and Elk Rd Aspen Oak

Compartment 124

168.0 Acres



GPS Location
45.214382, -84.107039



Legend

- Against State (Red)
- Private Line (Blue)
- Payment Unit Line (Yellow)
- Retention Area (Outside of Sale)
- Nearby Timber Sales
- Stand Boundaries
- Lakes
- Landing
- Payment Unit
- Recreational Trail
- Secondary Road
- Gravel Road
- Temporary Access
- Perennial River
- Section Corner

