



TIMBER SALE MAP

This information provided by authority of Part 525, 1994 PA 451, as amended.

Sale Number 54-036-24	Date 10/15/2024	
Scale 1:15,840	Page 1	Of 1

Forest Management Unit Atlanta Mgt Unit	County Alpena	Mapped By: D. Parris
		Cruised By: C. Michaud, D. Parris

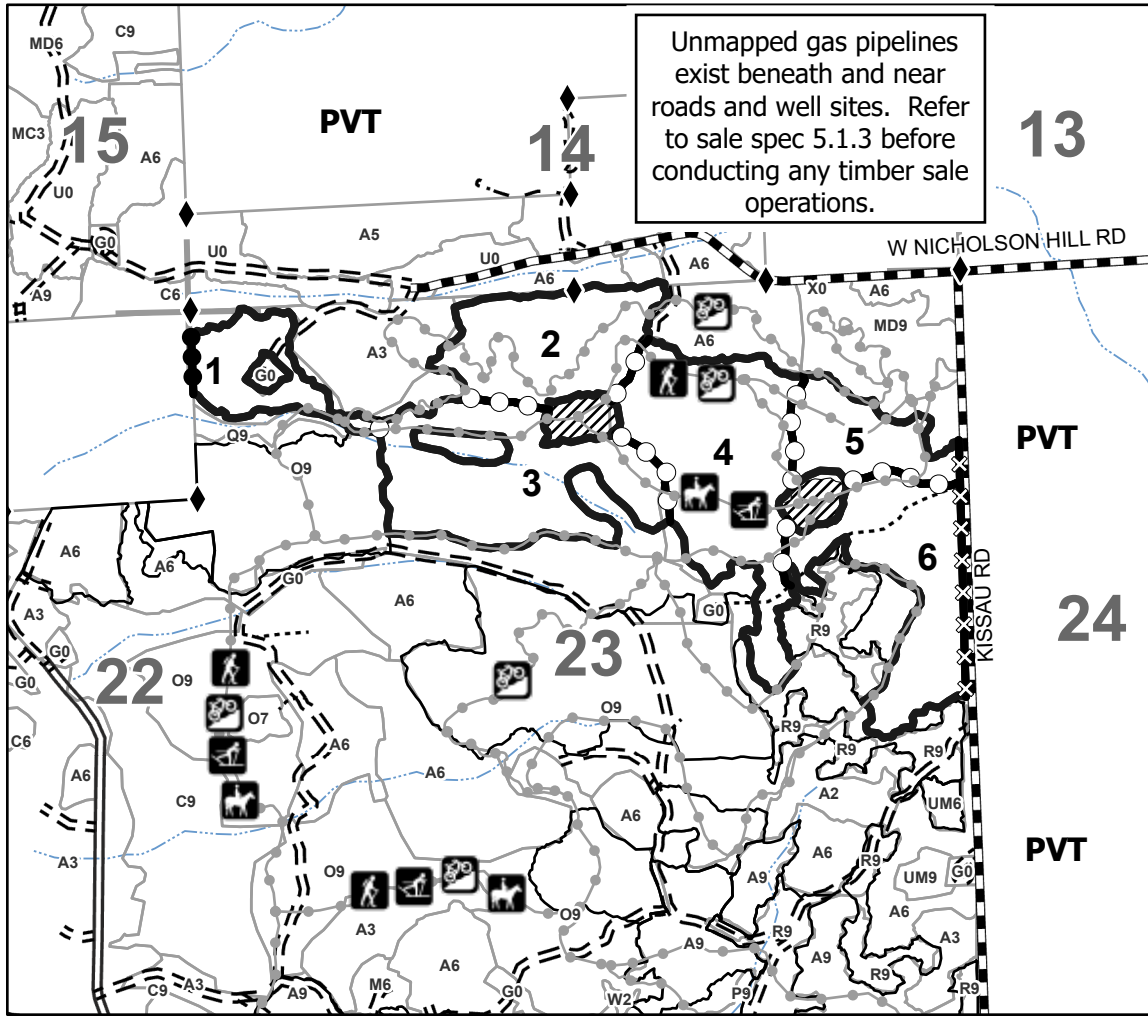
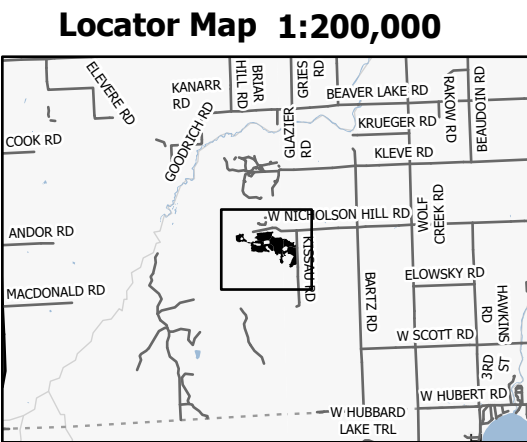
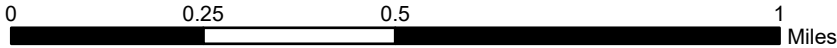
Township 29N	Range 06E	Section(s) and Subdivision(s) Sec. 14 SWSE; Sec. 23 NW,NE,N1/2SE;
------------------------	---------------------	--

Cover Type			
A = Aspen	J = Jack Pine	O = Oak	U = Upland Brush
B = Paper Birch	K = Rock	P = Lowland Poplar	UM = Upland Mix Forest
C = Cedar	L = Lowland Brush	Q = Mixed Swamp Conifer	V = Bog or Marsh
D = Treed Bog	LM = Lowland Mix Forest	R = Red Pine	W = White Pine
E = Swamp Hardwoods	M = Maple, Beech, Birch	S = Black Spruce	X = Non Stocked
F = Spruce/Fir	MC = Mixed Conifer	T = Tamarack	Y = Sand
G = Grass	MD = Mixed Deciduous	Z = Water	
H = Hemlock	N = Marsh		

Density	
0 = Non Stocked	5 = Pole Timber Medium
1 = Seedling Sapling Poor	6 = Pole Timber Well
2 = Seedling Sapling Medium	7 = Saw Timber Poor
3 = Seedling Sapling Well	8 = Saw Timber Medium
4 = Pole Timber Poor	9 = Saw Timber Well

PU #	Acres	PU #	Acres
1	10.7	4	36.3
2	21.9	5	12.4
3	31.0	6	25.2

Time Traveler II
Compartment 82
137.5 Acres



Unmapped gas pipelines exist beneath and near roads and well sites. Refer to sale spec 5.1.3 before conducting any timber sale operations.

Legend	
	Against State (Red)
	Against State (Unpainted)
	Private Line (Blue)
	Payment Unit (Green)
	Stand Boundaries
	Retention Areas
	Nearby Timber Sale
	Primary Forest Road
	Forest Access Route
	Administrative Access Only
	Government Gravel/Dirt
	Private Gravel/Dirt
	Recreational Trails
	Intermittent Stream
	Survey Corner
	Section Corner

Use QR Code to open Map in App

