



# TIMBER SALE MAP

This information provided by authority of Part 525, 1994 PA 451, as amended.

Forest Management Unit <b>Baraga</b>		County <b>Baraga</b>	Mapped By <b>Ryan Mattila</b>	Date <b>08/04/2020</b>	Page <b>1</b>	of <b>1</b>
Township <b>48N</b>	Range <b>31W</b>	Section(s) and Subdivision(s) <b>Sec 8; NW, N1/2SW, NWSE</b>		Scale <b>1:15,840</b>		
Cruised By <b>Baraga Staff</b>						

### Cover Type

A = Aspen	H = Hemlock	N = Marsh	U = Upland Brush
B = Paper Birch	J = Jack Pine	O = Oak	UM = Upland Mixed
C = Cedar	L = Lowland Brush	P = Lowland Poplar	V = Bog or Marsh
D = Treed Bog	LM = Lowland Mixed	Q = Mixed Swamp Conifer	W = White Pine
E = Swamp Hdwoods	M = Mpl, Bch, Brch	R = Red Pine	X = Non Stocked
F = Spruce Fir	MC = Mixed Conifer	S = Black Spruce	Z = Water
G = Grass	MD = Mixed Deciduous	T = Tamarack	

### Density

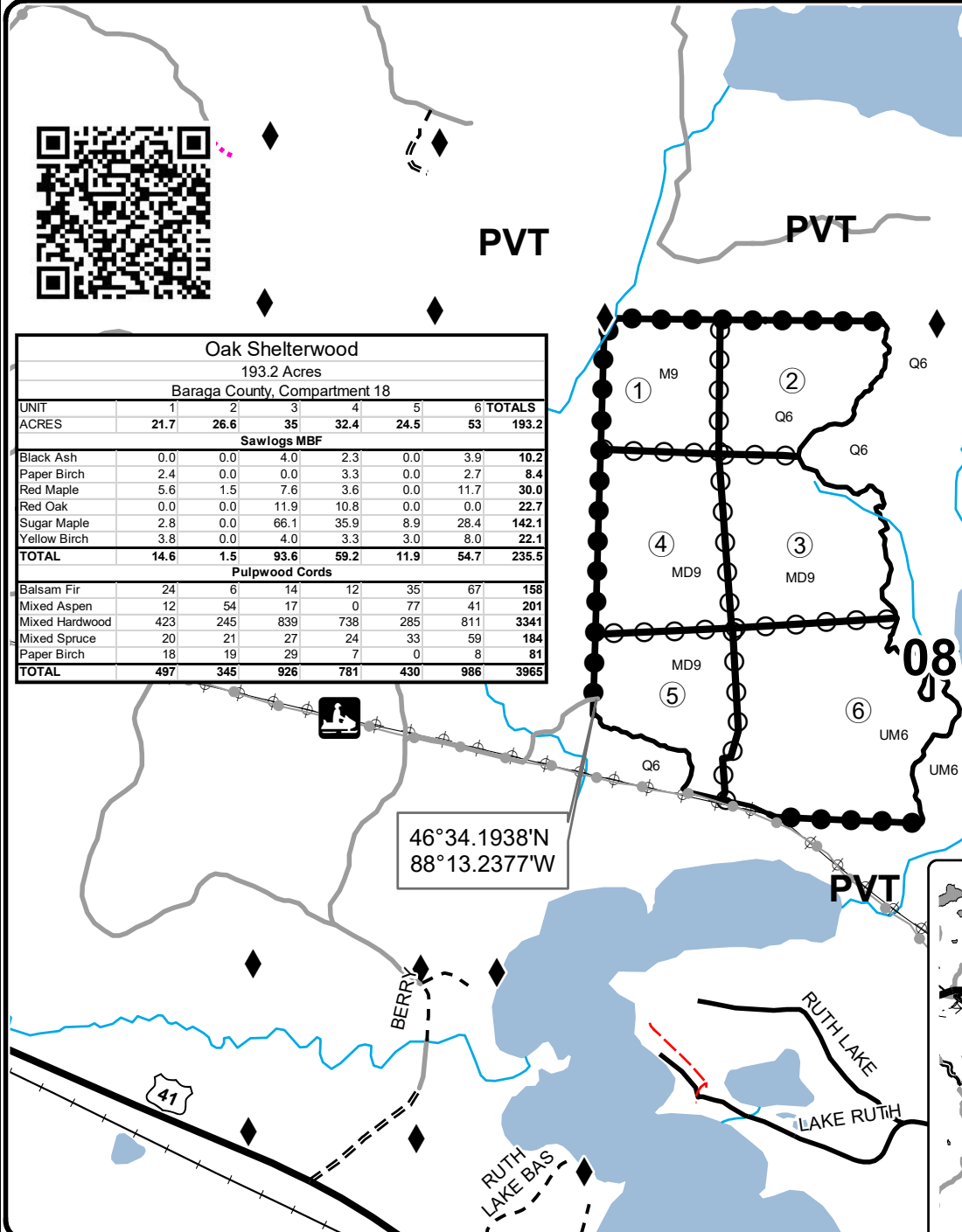
0 = Non Stocked	5 = Pole Timber Medium
1 = Seedling Sapling Poor	6 = Pole Timber Well
2 = Seedling Sapling Medium	7 = Saw Timber Poor
3 = Seedling Sapling Well	8 = Saw Timber Medium
4 = Pole Timber Poor	9 = Saw Timber Well



Oak Shelterwood							
193.2 Acres							
Baraga County, Compartment 18							
UNIT	1	2	3	4	5	6	TOTALS
ACRES	21.7	26.6	35	32.4	24.5	53	193.2
Sawlogs MBF							
Black Ash	0.0	0.0	4.0	2.3	0.0	3.9	10.2
Paper Birch	2.4	0.0	0.0	3.3	0.0	2.7	8.4
Red Maple	5.6	1.5	7.6	3.6	0.0	11.7	30.0
Red Oak	0.0	0.0	11.9	10.8	0.0	0.0	22.7
Sugar Maple	2.8	0.0	66.1	35.9	8.9	28.4	142.1
Yellow Birch	3.8	0.0	4.0	3.3	3.0	8.0	22.1
<b>TOTAL</b>	<b>14.6</b>	<b>1.5</b>	<b>93.6</b>	<b>59.2</b>	<b>11.9</b>	<b>54.7</b>	<b>235.5</b>
Pulpwood Cords							
Balsam Fir	24	6	14	12	35	67	158
Mixed Aspen	12	54	17	0	77	41	201
Mixed Hardwood	423	245	839	738	285	811	3341
Mixed Spruce	20	21	27	24	33	59	184
Paper Birch	18	19	29	7	0	8	81
<b>TOTAL</b>	<b>497</b>	<b>345</b>	<b>926</b>	<b>781</b>	<b>430</b>	<b>986</b>	<b>3965</b>

### Legend

- Highway
- Forest Access Route
- Paved Road
- Gravel Road
- County Road - Seasonal
- Private
- Temporary Management Access
- Recreational Trail
- Survey Corners
- Perennial River
- Lakes and Rivers
- Against State (Red)
- Payment Unit (Red)
- Private Line (Blue)
- Powerline



Locator Map  
1:200,000

