



TIMBER SALE MAP

This information provided by authority of Part 525, 1994 PA 451, as amended.

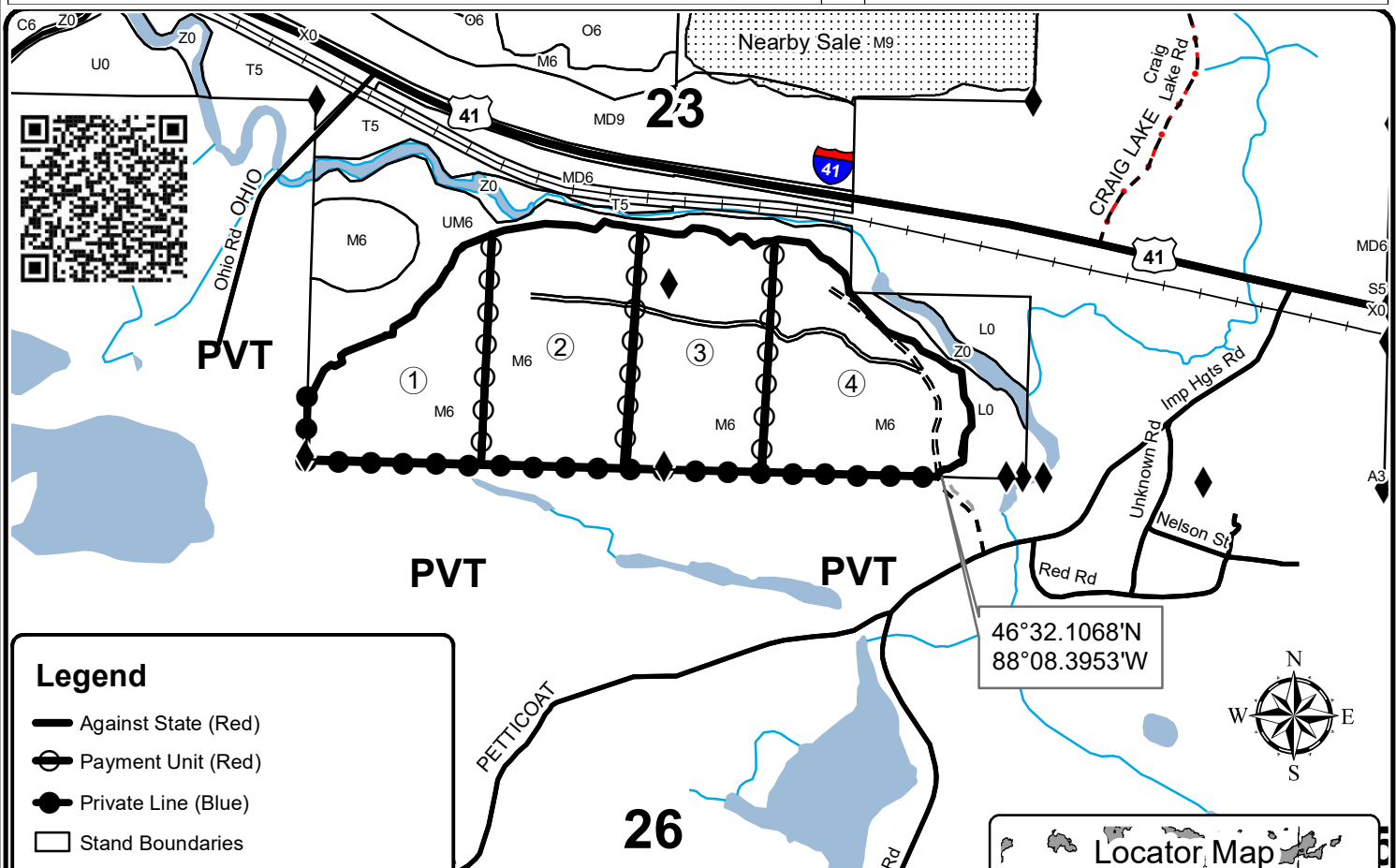
Forest Management Unit Baraga		County Baraga	Mapped By Ryan Mattila	Date 5/9/2019	Page 1	of 1
Township 48N	Range 31W	Section(s) and Subdivision(s) Sec 23; S1/2.		Scale 1:15,840		

Cover Type

A = Aspen	H = Hemlock	N = Marsh	U = Upland Brush
B = Paper Birch	J = Jack Pine	O = Oak	UM = Upland Mixed
C = Cedar	L = Lowland Brush	P = Lowland Poplar	V = Bog or Marsh
D = Treed Bog	LM = Lowland Mixed	Q = Mixed Swamp Conifer	W = White Pine
E = Swamp Hdwoods	M = Mpl, Bch, Brch	R = Red Pine	X = Non Stocked
F = Spruce Fir	MC = Mixed Conifer	S = Black Spruce	Z = Water
G = Grass	MD = Mixed Deciduous	T = Tamarack	

Density

0 = Non Stocked	5 = Pole Timber Medium
1 = Seedling Sapling Poor	6 = Pole Timber Well
2 = Seedling Sapling Medium	7 = Saw Timber Poor
3 = Seedling Sapling Well	8 = Saw Timber Medium
4 = Pole Timber Poor	9 = Saw Timber Well



Legend

- Against State (Red)
- Payment Unit (Red)
- Private Line (Blue)
- Stand Boundaries
- DNR - Secondary Forest Road
- DNR - Forest Access Route
- Federal / State Highway
- Federal / State / County - Paved Road
- Federal / State - Dirt / Gravel Road
- County - Gravel Road
- Private - Dirt / Gravel Road
- Survey Corners
- Lakes and Rivers
- Nearby Timber Sales

Railroads

- Active Railroad

Mine Shaft Hardwoods

156.8 Acres

Baraga County, Compartment 18

UNIT	1	2	3	4	TOTALS
ACRES	32.4	43.4	39.3	41.7	156.8
Sawlogs MBF					
Basswood	0.0	0.0	5.9	2.6	8.5
Red Maple	3.5	1.4	1.9	2.0	8.8
Sugar Maple	33.3	47.5	34.0	22.1	136.9
Yellow Birch	0.0	0.0	0.8	0.0	0.8
TOTAL	36.8	48.9	42.6	26.7	155.0
Pulpwood Cords					
Balsam Fir	16	0	0	18	34
Basswood	0	0	11	5	16
Mixed Hardwood	92	270	122	230	714
White Spruce	3	0	0	0	3
TOTAL	111	270	133	253	733

Locator Map 1:200,000

