



# TIMBER SALE MAP

This information provided by authority of Part 525, 1994 PA 451, as amended.

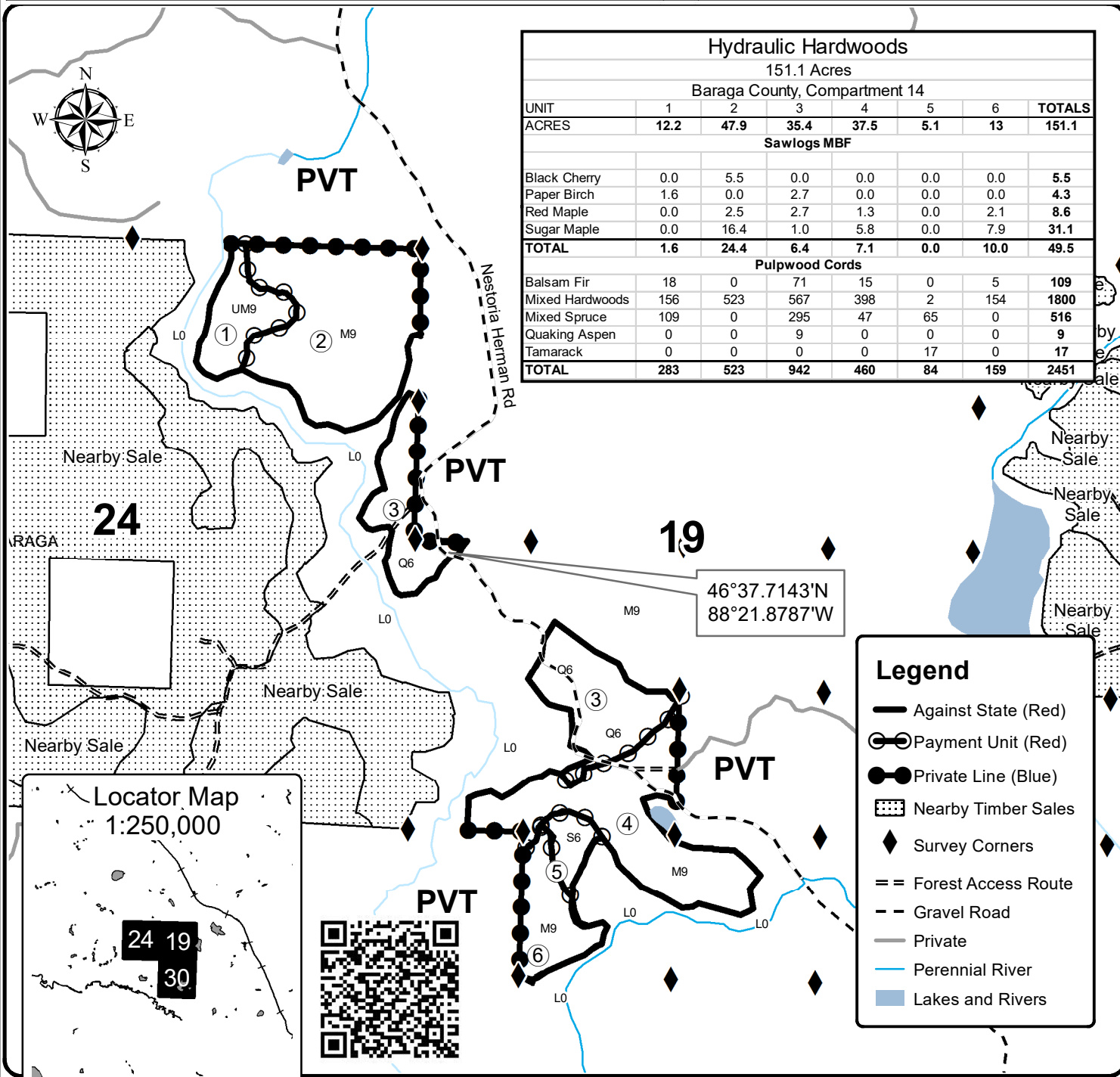
Forest Management Unit <b>Baraga</b>		County <b>Baraga</b>	Mapped By <b>Ryan Mattila</b>	Date <b>4/18/2019</b>	Page <b>1</b>	of <b>1</b>
Township <b>49N</b>	Range <b>32&amp;33 W</b>	Section(s) and Subdivision(s) <b>49N 33W - Sec 24; NE1/4, NESE. 49N 32W - Sec 19; SW1/4. Sec 30; NENW, NWNE.</b>		Scale <b>1:15,840</b>		

### Cover Type

A = Aspen	H = Hemlock	N = Marsh	U = Upland Brush
B = Paper Birch	J = Jack Pine	O = Oak	UM = Upland Mixed
C = Cedar	L = Lowland Brush	P = Lowland Poplar	V = Bog or Marsh
D = Treed Bog	LM = Lowland Mixed	Q = Mixed Swamp Conifer	W = White Pine
E = Swamp Hdwoods	M = Mpl, Bch, Brch	R = Red Pine	X = Non Stocked
F = Spruce Fir	MC = Mixed Conifer	S = Black Spruce	Z = Water
G = Grass	MD = Mixed Deciduous	T = Tamarack	

### Density

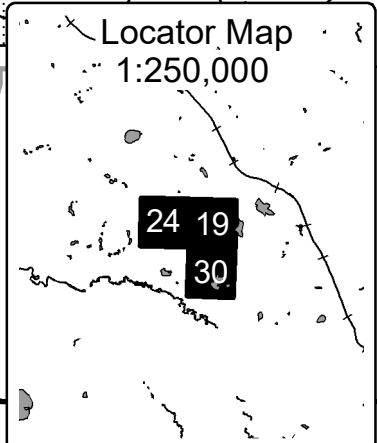
0 = Non Stocked	5 = Pole Timber Medium
1 = Seedling Sapling Poor	6 = Pole Timber Well
2 = Seedling Sapling Medium	7 = Saw Timber Poor
3 = Seedling Sapling Well	8 = Saw Timber Medium
4 = Pole Timber Poor	9 = Saw Timber Well



### Hydraulic Hardwoods

151.1 Acres  
Baraga County, Compartment 14

UNIT	1	2	3	4	5	6	TOTALS
ACRES	12.2	47.9	35.4	37.5	5.1	13	151.1
<b>Sawlogs MBF</b>							
Black Cherry	0.0	5.5	0.0	0.0	0.0	0.0	5.5
Paper Birch	1.6	0.0	2.7	0.0	0.0	0.0	4.3
Red Maple	0.0	2.5	2.7	1.3	0.0	2.1	8.6
Sugar Maple	0.0	16.4	1.0	5.8	0.0	7.9	31.1
<b>TOTAL</b>	<b>1.6</b>	<b>24.4</b>	<b>6.4</b>	<b>7.1</b>	<b>0.0</b>	<b>10.0</b>	<b>49.5</b>
<b>Pulpwood Cords</b>							
Balsam Fir	18	0	71	15	0	5	109
Mixed Hardwoods	156	523	567	398	2	154	1800
Mixed Spruce	109	0	295	47	65	0	516
Quaking Aspen	0	0	9	0	0	0	9
Tamarack	0	0	0	0	17	0	17
<b>TOTAL</b>	<b>283</b>	<b>523</b>	<b>942</b>	<b>460</b>	<b>84</b>	<b>159</b>	<b>2451</b>



### Legend

- Against State (Red)
- Payment Unit (Red)
- Private Line (Blue)
- Nearby Timber Sales
- Survey Corners
- Forest Access Route
- Gravel Road
- Private
- Perennial River
- Lakes and Rivers

