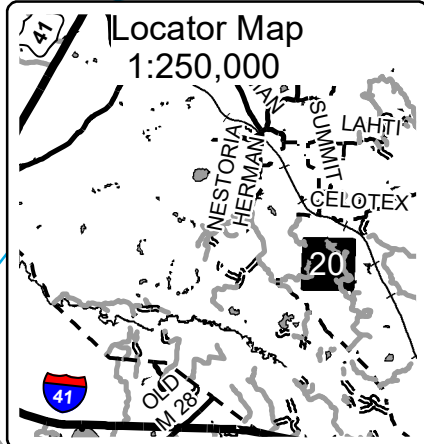




# TIMBER SALE MAP

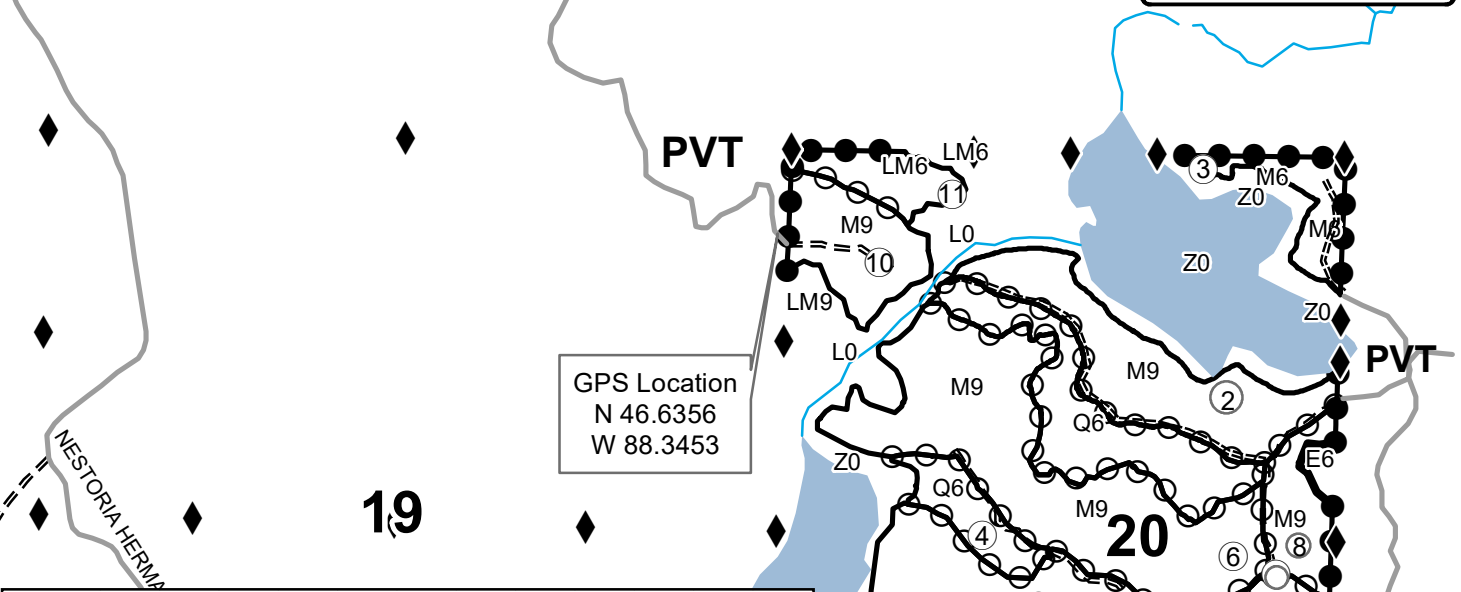
This information provided by authority of Part 525, 1994 PA 451, as amended.

Forest Management Unit <b>Baraga</b>		County <b>Baraga</b>	Mapped By <b>Mittlestat</b>	Date <b>09/20/2019</b>	Page <b>1</b>	of <b>1</b>
Township <b>49N</b>	Range <b>32W</b>	Section(s) and Subdivision(s) <b>Section 20 : See Map</b>		Scale <b>1:15,840</b>		
<b>Cover Type</b>			<b>Density</b>			
A = Aspen	H = Hemlock	N = Marsh	U = Upland Brush	0 = Non Stocked	5 = Pole Timber Medium	
B = Paper Birch	J = Jack Pine	O = Oak	UM = Upland Mixed	1 = Seedling Sapling Poor	6 = Pole Timber Well	
C = Cedar	L = Lowland Brush	P = Lowland Poplar	V = Bog or Marsh	2 = Seedling Sapling Medium	7 = Saw Timber Poor	
D = Treed Bog	LM = Lowland Mixed	Q = Mixed Swamp Conifer	W = White Pine	3 = Seedling Sapling Well	8 = Saw Timber Medium	
E = Swamp Hdwoods	M = Mpl, Bch, Brch	R = Red Pine	X = Non Stocked	4 = Pole Timber Poor	9 = Saw Timber Well	
F = Spruce Fir	MC = Mixed Conifer	S = Black Spruce	Z = Water			
G = Grass	MD = Mixed Deciduous	T = Tamarack				



### Legend

- ◆ Survey Corners
- == Forest Access Route
- - Gravel Road
- Private
- Perennial River
- Lakes and Rivers
- Against State (Red)
- Payment Unit (Red)
- Private Line (Blue)



Summit Hdwd												
227 Acres												
Baraga County, Compartment 14												
UNIT	1	2	3	4	5	6	7	8	9	10	11 TOTALS	
ACRES	22	26.9	7.8	8.1	40.9	54.1	26.3	9.6	9.2	14.6	7.5	227.0
Sawlogs MBF												
Black Ash	3.1	2.1	0.0	9.1	3.8	5.2	11.4	0.0	0.0	0.0	3.6	38.3
Black Cherry	0.0	0.0	0.0	0.0	0.0	1.6	0.0	0.0	0.0	0.0	0.0	1.6
Red Maple	16.0	7.6	1.2	2.2	7.8	19.1	3.3	2.3	1.1	0.4	1.3	62.3
Sugar Maple	11.6	17.8	3.9	0.0	53.2	38.0	6.2	12.8	6.6	5.9	0.0	156.0
Yellow Birch	10.7	0.8	0.0	10.3	2.9	4.7	3.9	2.1	4.1	0.0	1.3	40.8
Red Oak	0.0	0.0	0.0	0.0	1.0	0.7	0.0	0.0	0.0	0.0	0.0	1.7
<b>TOTAL</b>	<b>41.4</b>	<b>28.3</b>	<b>5.1</b>	<b>21.6</b>	<b>68.7</b>	<b>69.3</b>	<b>24.8</b>	<b>17.2</b>	<b>11.8</b>	<b>6.3</b>	<b>6.2</b>	<b>300.7</b>
Pulpwood Cords												
Balsam Fir	29	16	14	0	11	23	2	7	5	10	14	131
Black Ash	27	8	0	51	12	15	26	0	0	0	23	162
Black Spruce	58	2	0	4	0	43	5	0	0	0	35	147
White Spruce	0	4	0	0	0	4	0	0	6	0	0	14
Mixed Hardwood	204	139	37	107	277	295	89	58	54	68	58	1386
<b>TOTAL</b>	<b>318</b>	<b>169</b>	<b>51</b>	<b>162</b>	<b>300</b>	<b>380</b>	<b>122</b>	<b>65</b>	<b>65</b>	<b>78</b>	<b>130</b>	<b>1840</b>

