

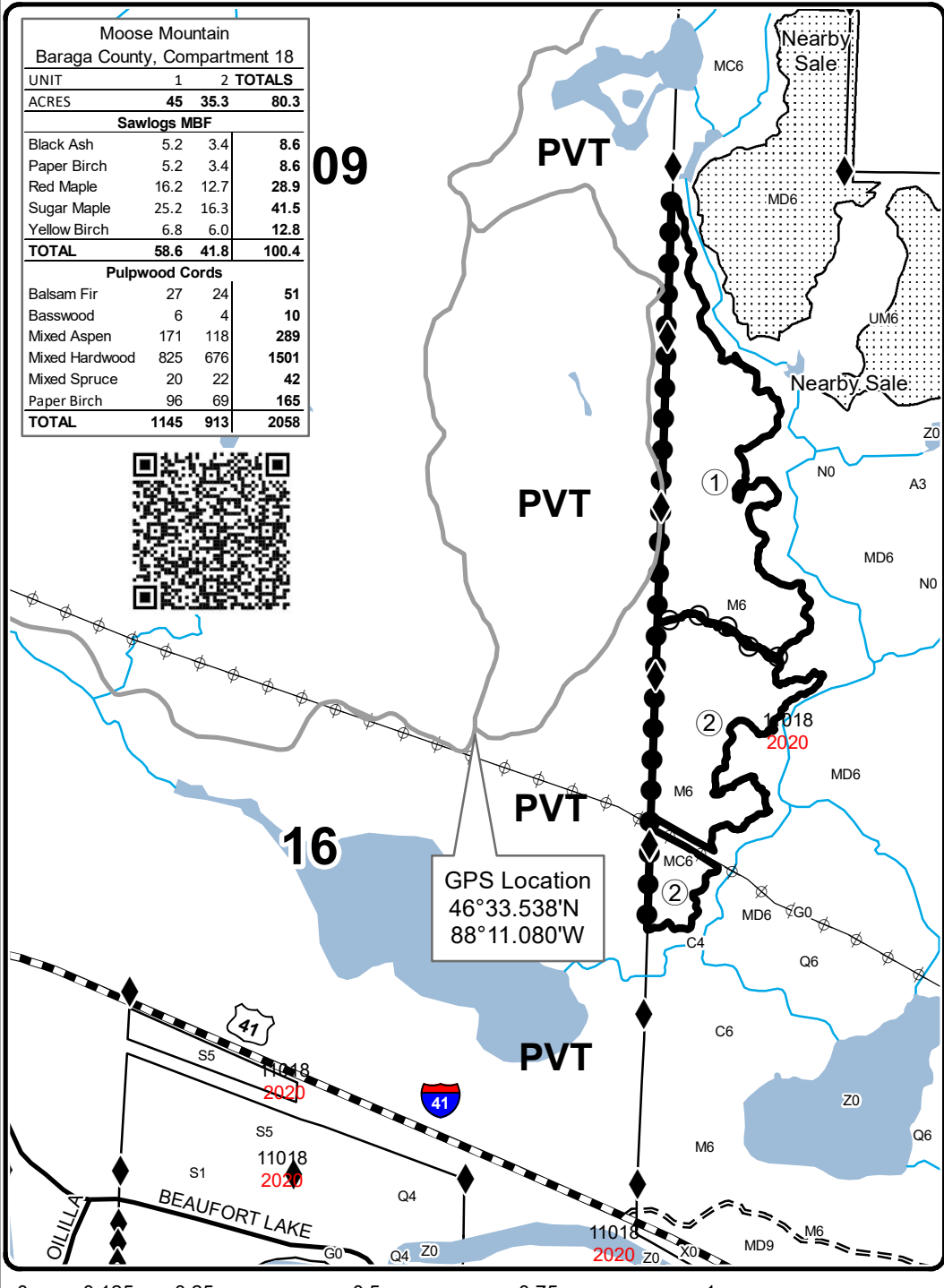


# TIMBER SALE MAP

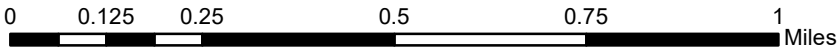
This information provided by authority of Part 525, 1994 PA 451, as amended.

Forest Management Unit <b>Baraga</b>		County <b>Baraga</b>	Mapped By <b>Carlson</b>	Date <b>8/11/2021</b>	Page <b>1</b>	of <b>1</b>
Township <b>48N</b>	Range <b>31W</b>	Section(s) and Subdivision(s) <b>Sec 10 - W1/2SW; Sec 15 - W1/2NW, NWSW</b>			Scale <b>1:15,840</b>	
<b>Cover Type</b>			<b>Density</b>			
A = Aspen B = Paper Birch C = Cedar D = Treed Bog E = Swamp Hdwoods F = Spruce Fir G = Grass	H = Hemlock J = Jack Pine L = Lowland Brush LM = Lowland Mixed M = Mpl, Bch, Brch MC = Mixed Conifer MD = Mixed Deciduous	N = Marsh O = Oak P = Lowland Poplar Q = Mixed Swamp Conifer R = Red Pine S = Black Spruce T = Tamarack	U = Upland Brush UM = Upland Mixed V = Bog or Marsh W = White Pine X = Non Stocked Z = Water	0 = Non Stocked 1 = Seedling Sapling Poor 2 = Seedling Sapling Medium 3 = Seedling Sapling Well 4 = Pole Timber Poor	5 = Pole Timber Medium 6 = Pole Timber Well 7 = Saw Timber Poor 8 = Saw Timber Medium 9 = Saw Timber Well	

Moose Mountain Baraga County, Compartment 18			
UNIT	1	2	TOTALS
ACRES	45	35.3	80.3
Sawlogs MBF			
Black Ash	5.2	3.4	8.6
Paper Birch	5.2	3.4	8.6
Red Maple	16.2	12.7	28.9
Sugar Maple	25.2	16.3	41.5
Yellow Birch	6.8	6.0	12.8
<b>TOTAL</b>	<b>58.6</b>	<b>41.8</b>	<b>100.4</b>
Pulpwood Cords			
Balsam Fir	27	24	51
Basswood	6	4	10
Mixed Aspen	171	118	289
Mixed Hardwood	825	676	1501
Mixed Spruce	20	22	42
Paper Birch	96	69	165
<b>TOTAL</b>	<b>1145</b>	<b>913</b>	<b>2058</b>



GPS Location  
46°33.538'N  
88°11.080'W



### Legend

- ◆ Survey Corners
- ▬ Highway
- == Forest Access Route
- Paved Road
- Private
- Perennial River
- Lakes and Rivers
- Against State (Red)
- Payment Unit (Red)
- Private Line (Blue)
- ▨ Nearby Timber Sales

