



TIMBER SALE MAP

This information provided by authority of Part 525, 1994 PA 451, as amended.

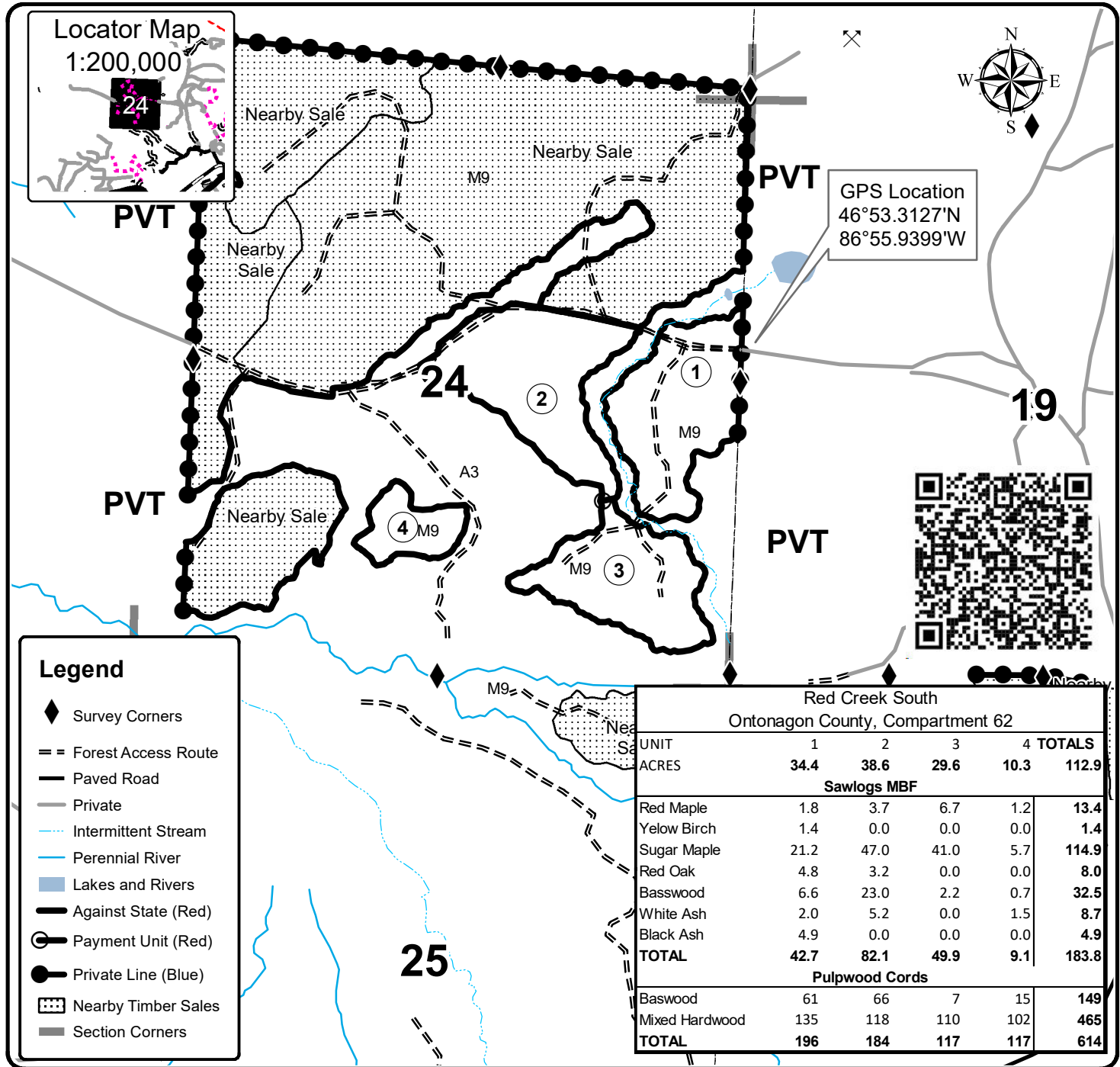
Forest Management Unit 11		County Baraga	Mapped By Sullivan	Date 5/11/21	Page 1	of 1
Township 52N	Range 37W	Section(s) and Subdivision(s) Sec 24 SENW, S1/2NE, E1/2SW, SE		Scale 1:15,840		
Cruised By Baraga Staff						

Cover Type

A = Aspen	H = Hemlock	N = Marsh	U = Upland Brush
B = Paper Birch	J = Jack Pine	O = Oak	UM = Upland Mixed
C = Cedar	L = Lowland Brush	P = Lowland Poplar	V = Bog or Marsh
D = Treed Bog	LM = Lowland Mixed	Q = Mixed Swamp Conifer	W = White Pine
E = Swamp Hdwoods	M = Mpl, Bch, Brch	R = Red Pine	X = Non Stocked
F = Spruce Fir	MC = Mixed Conifer	S = Black Spruce	Z = Water
G = Grass	MD = Mixed Deciduous	T = Tamarack	

Density

0 = Non Stocked	5 = Pole Timber Medium
1 = Seedling Sapling Poor	6 = Pole Timber Well
2 = Seedling Sapling Medium	7 = Saw Timber Poor
3 = Seedling Sapling Well	8 = Saw Timber Medium
4 = Pole Timber Poor	9 = Saw Timber Well



Red Creek South Ontonagon County, Compartment 62					
UNIT	1	2	3	4	TOTALS
ACRES	34.4	38.6	29.6	10.3	112.9
Sawlogs MBF					
Red Maple	1.8	3.7	6.7	1.2	13.4
Yellow Birch	1.4	0.0	0.0	0.0	1.4
Sugar Maple	21.2	47.0	41.0	5.7	114.9
Red Oak	4.8	3.2	0.0	0.0	8.0
Basswood	6.6	23.0	2.2	0.7	32.5
White Ash	2.0	5.2	0.0	1.5	8.7
Black Ash	4.9	0.0	0.0	0.0	4.9
TOTAL	42.7	82.1	49.9	9.1	183.8
Pulpwood Cords					
Baswood	61	66	7	15	149
Mixed Hardwood	135	118	110	102	465
TOTAL	196	184	117	117	614

