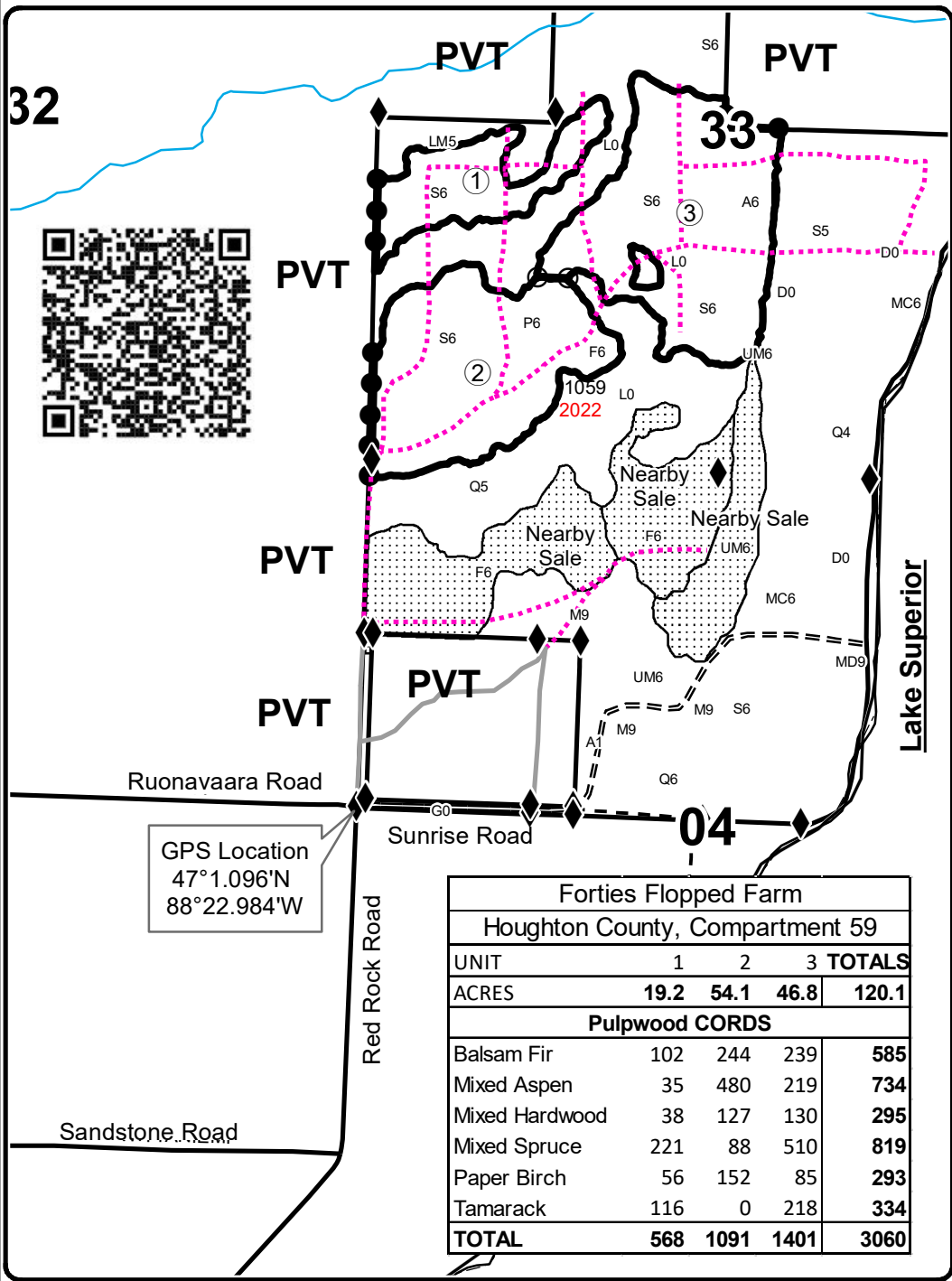




TIMBER SALE MAP

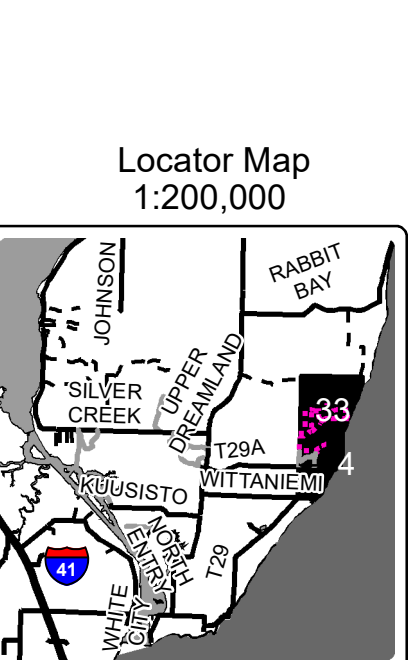
This information provided by authority of Part 525, 1994 PA 451, as amended.

Forest Management Unit Baraga		County Houghton	Mapped By Carlson	Date 1/27/2022	Page 1	of 1
Township 53N & 54N	Range 32W	Section(s) and Subdivision(s) Sec 4 - NWNW; Sec 33 - SENW, SW1/4, W1/2SE		Scale 1:15,840		
Cover Type				Density		
A = Aspen	H = Hemlock	N = Marsh	U = Upland Brush	0 = Non Stocked	5 = Pole Timber Medium	
B = Paper Birch	J = Jack Pine	O = Oak	UM = Upland Mixed	1 = Seedling Sapling Poor	6 = Pole Timber Well	
C = Cedar	L = Lowland Brush	P = Lowland Poplar	V = Bog or Marsh	2 = Seedling Sapling Medium	7 = Saw Timber Poor	
D = Treed Bog	LM = Lowland Mixed	Q = Mixed Swamp Conifer	W = White Pine	3 = Seedling Sapling Well	8 = Saw Timber Medium	
E = Swamp Hdwoods	M = Mpl, Bch, Brch	R = Red Pine	X = Non Stocked	4 = Pole Timber Poor	9 = Saw Timber Well	
F = Spruce Fir	MC = Mixed Conifer	S = Black Spruce	Z = Water			
G = Grass	MD = Mixed Deciduous	T = Tamarack				



Legend

- ◆ Survey Corners
- Secondary Forest Road
- == Forest Access Route
- Paved Road
- - Gravel Road
- Private
- ⋯ Temporary Management Access
- Against State (Red)
- ⊕ Payment Unit (Red)
- Private Line (Blue)
- ⋯ Nearby Timber Sales



Forties Flopped Farm				
Houghton County, Compartment 59				
UNIT	1	2	3	TOTALS
ACRES	19.2	54.1	46.8	120.1
Pulpwood CORDS				
Balsam Fir	102	244	239	585
Mixed Aspen	35	480	219	734
Mixed Hardwood	38	127	130	295
Mixed Spruce	221	88	510	819
Paper Birch	56	152	85	293
Tamarack	116	0	218	334
TOTAL	568	1091	1401	3060

