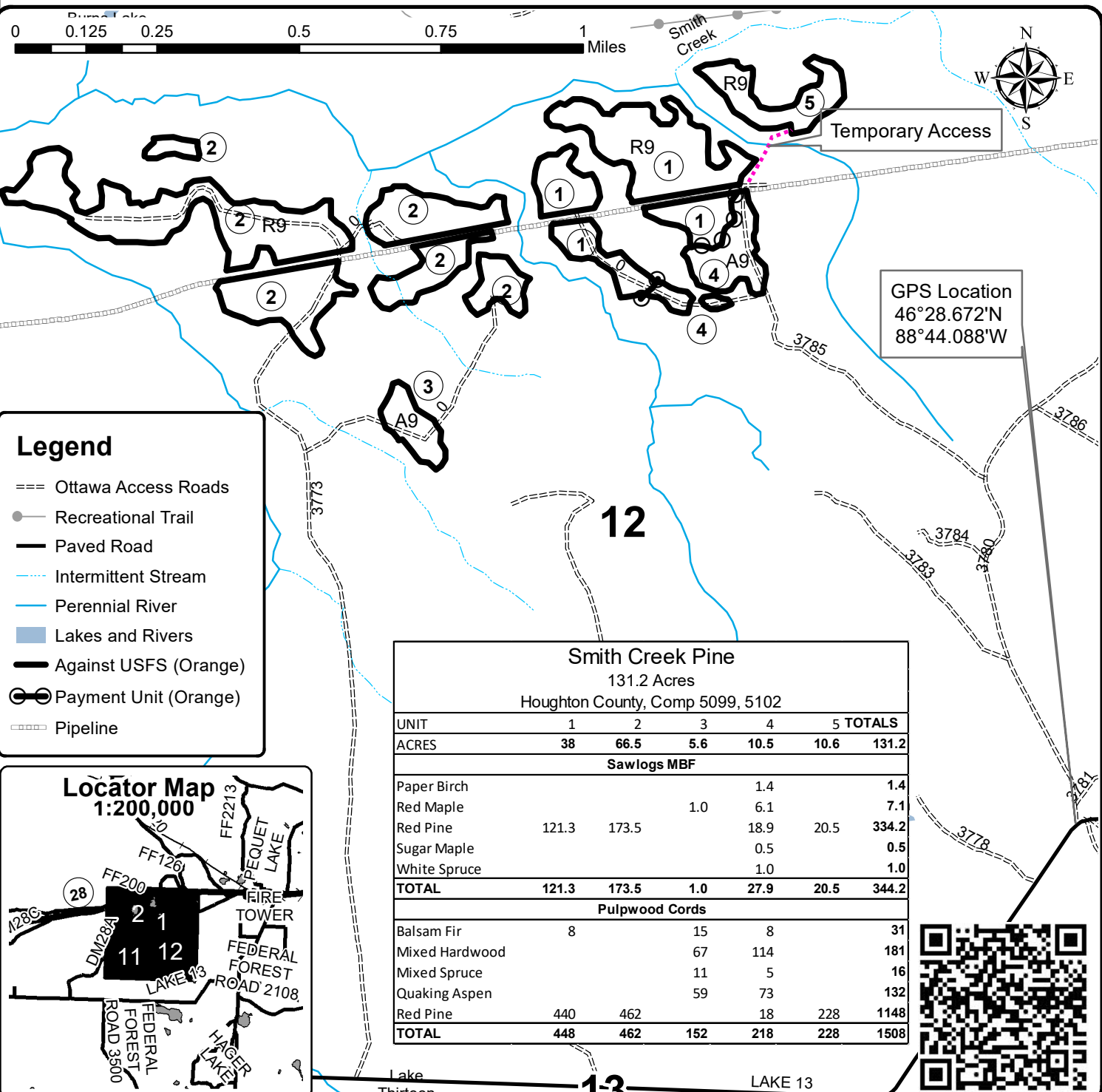




TIMBER SALE MAP

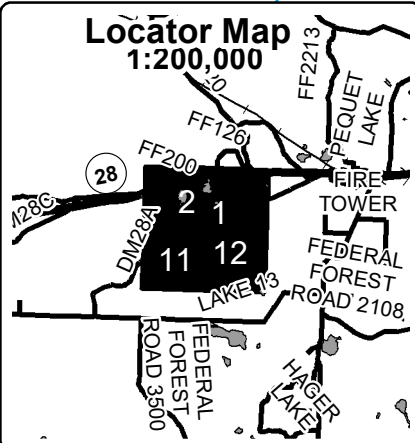
This information provided by authority of Part 525, 1994 PA 451, as amended.

Forest Management Unit Baraga		County Houghton	Mapped By Brodeur	Date 05/04/2021	Page 1	of 1
Township 47N	Range 36W	Section(s) and Subdivision(s) Sec 1 SE, SESW, SWSW; Sec 2 S1/2SE, SESW; Section 11 N1/2NE; Sec 12 N1/2NW, SWNW		Scale 1:15,840		
Cover Type			Density			
A = Aspen	H = Hemlock	N = Marsh	U = Upland Brush	0 = Non Stocked	5 = Pole Timber Medium	
B = Paper Birch	J = Jack Pine	O = Oak	UM = Upland Mixed	1 = Seedling Sapling Poor	6 = Pole Timber Well	
C = Cedar	L = Lowland Brush	P = Lowland Poplar	V = Bog or Marsh	2 = Seedling Sapling Medium	7 = Saw Timber Poor	
D = Treed Bog	LM = Lowland Mixed	Q = Mixed Swamp Conifer	W = White Pine	3 = Seedling Sapling Well	8 = Saw Timber Medium	
E = Swamp Hdwoods	M = Mpl, Bch, Brch	R = Red Pine	X = Non Stocked	4 = Pole Timber Poor	9 = Saw Timber Well	
F = Spruce Fir	MC = Mixed Conifer	S = Black Spruce	Z = Water			
G = Grass	MD = Mixed Deciduous	T = Tamarack				



Legend

- === Ottawa Access Roads
- Recreational Trail
- Paved Road
- Intermittent Stream
- Perennial River
- Lakes and Rivers
- Against USFS (Orange)
- Payment Unit (Orange)
- Pipeline



Smith Creek Pine					
131.2 Acres					
Houghton County, Comp 5099, 5102					
UNIT	1	2	3	4	5 TOTALS
ACRES	38	66.5	5.6	10.5	10.6 131.2
Sawlogs MBF					
Paper Birch				1.4	1.4
Red Maple			1.0	6.1	7.1
Red Pine	121.3	173.5		18.9	334.2
Sugar Maple				0.5	0.5
White Spruce				1.0	1.0
TOTAL	121.3	173.5	1.0	27.9	344.2
Pulpwood Cords					
Balsam Fir	8		15	8	31
Mixed Hardwood			67	114	181
Mixed Spruce			11	5	16
Quaking Aspen			59	73	132
Red Pine	440	462		18	1148
TOTAL	448	462	152	218	1508

