

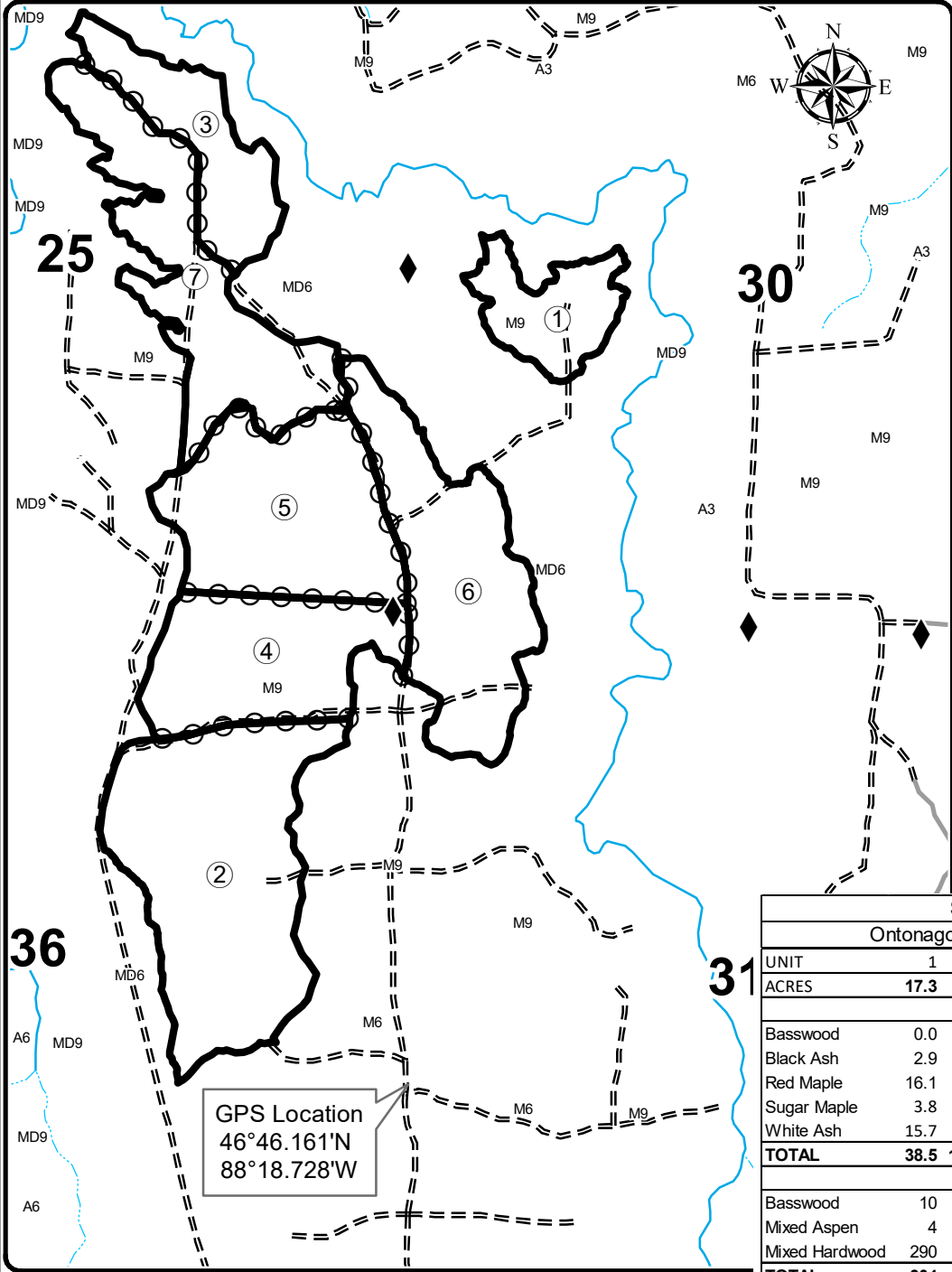


TIMBER SALE MAP

This information provided by authority of Part 525, 1994 PA 451, as amended.

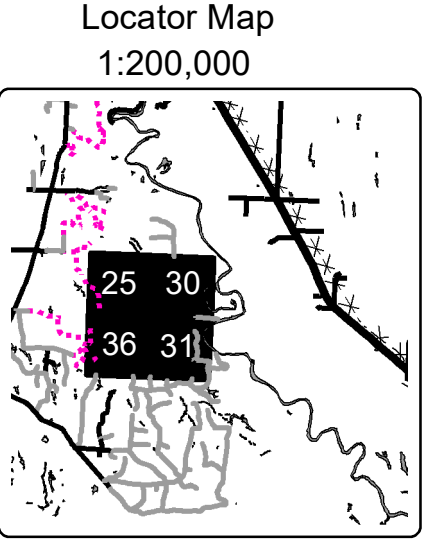
Sale Number	Year
11-019	22

Forest Management Unit Baraga		County Ontonagon	Mapped By Carlson	Date 8/29/2022	Page 1	of 1
Township 51N	Range 39 & 40W	Section(s) and Subdivision(s) See Map		Scale 1:15,840		
Cover Type				Density		
A = Aspen	H = Hemlock	N = Marsh	U = Upland Brush	0 = Non Stocked	5 = Pole Timber Medium	
B = Paper Birch	J = Jack Pine	O = Oak	UM = Upland Mixed	1 = Seedling Sapling Poor	6 = Pole Timber Well	
C = Cedar	L = Lowland Brush	P = Lowland Poplar	V = Bog or Marsh	2 = Seedling Sapling Medium	7 = Saw Timber Poor	
D = Treed Bog	LM = Lowland Mixed	Q = Mixed Swamp Conifer	W = White Pine	3 = Seedling Sapling Well	8 = Saw Timber Medium	
E = Swamp Hdwoods	M = Mpl, Bch, Brch	R = Red Pine	X = Non Stocked	4 = Pole Timber Poor	9 = Saw Timber Well	
F = Spruce Fir	MC = Mixed Conifer	S = Black Spruce	Z = Water			
G = Grass	MD = Mixed Deciduous	T = Tamarack				



Legend

- Stand Boundaries
- Survey Corners
- Forest Access Route
- Private
- Intermittent Stream
- Perennial River
- Against State (Red)
- Payment Unit (Red)



Skeleton Hardwoods								
Ontonagon County, Compartment 11070								
UNIT	1	2	3	4	5	6	7	TOTALS
ACRES	17.3	71.2	24.6	38.0	48.8	49.8	47.1	296.8
Sawlogs MBF								
Basswood	0.0	17.6	0.0	9.4	12.0	12.3	0.0	51.3
Black Ash	2.9	1.4	4.1	0.8	1.0	1.0	0.0	11.2
Red Maple	16.1	18.6	22.8	9.9	12.8	13.0	39.5	132.7
Sugar Maple	3.8	57.7	5.5	30.8	39.4	40.3	10.8	188.3
White Ash	15.7	44.0	22.3	23.5	30.2	30.8	23.4	189.9
TOTAL	38.5	139.3	54.7	74.4	95.4	97.4	73.7	573.4
Pulpwood Cords								
Basswood	10	70	14	38	49	50	43	274
Mixed Aspen	4	8	6	4	5	5	39	71
Mixed Hardwood	290	517	413	274	354	360	715	2923
TOTAL	304	595	433	316	408	415	797	3268

