



TIMBER SALE MAP

This information provided by authority of Part 525, 1994 PA 451, as amended.

Forest Management Unit Baraga		County Baraga	Mapped By Carlson	Date 11/10/2022	Page 1	of 1
Township 50N	Range 33W	Section(s) and Subdivision(s) Sec 20 - S1/2NE, NWSE		Scale 1:15,840		
Cruised By Baraga Staff						

Cover Type

A = Aspen	H = Hemlock	N = Marsh	U = Upland Brush
B = Paper Birch	J = Jack Pine	O = Oak	UM = Upland Mixed
C = Cedar	L = Lowland Brush	P = Lowland Poplar	V = Bog or Marsh
D = Treed Bog	LM = Lowland Mixed	Q = Mixed Swamp Conifer	W = White Pine
E = Swamp Hdwoods	M = Mpl, Bch, Brch	R = Red Pine	X = Non Stocked
F = Spruce Fir	MC = Mixed Conifer	S = Black Spruce	Z = Water
G = Grass	MD = Mixed Deciduous	T = Tamarack	

Density

0 = Non Stocked	5 = Pole Timber Medium
1 = Seedling Sapling Poor	6 = Pole Timber Well
2 = Seedling Sapling Medium	7 = Saw Timber Poor
3 = Seedling Sapling Well	8 = Saw Timber Medium
4 = Pole Timber Poor	9 = Saw Timber Well

Mulligan Mix			
Baraga County, Compartment 4			
UNIT	1	2	TOTALS
ACRES	15.3	40.7	56.0
Sawlogs MBF			
Black Cherry	0.9	0.0	0.9
Paper Birch	1.8	3.0	4.8
Red Maple	17.8	22.7	40.5
TOTAL	20.5	25.7	46.2
Pulpwood CORDS			
Balsam Fir	3	94	97
Mixed Aspen	0	134	134
Mixed Hardwood	163	564	727
Mixed Spruce	21	265	286
TOTAL	187	1057	1244

17

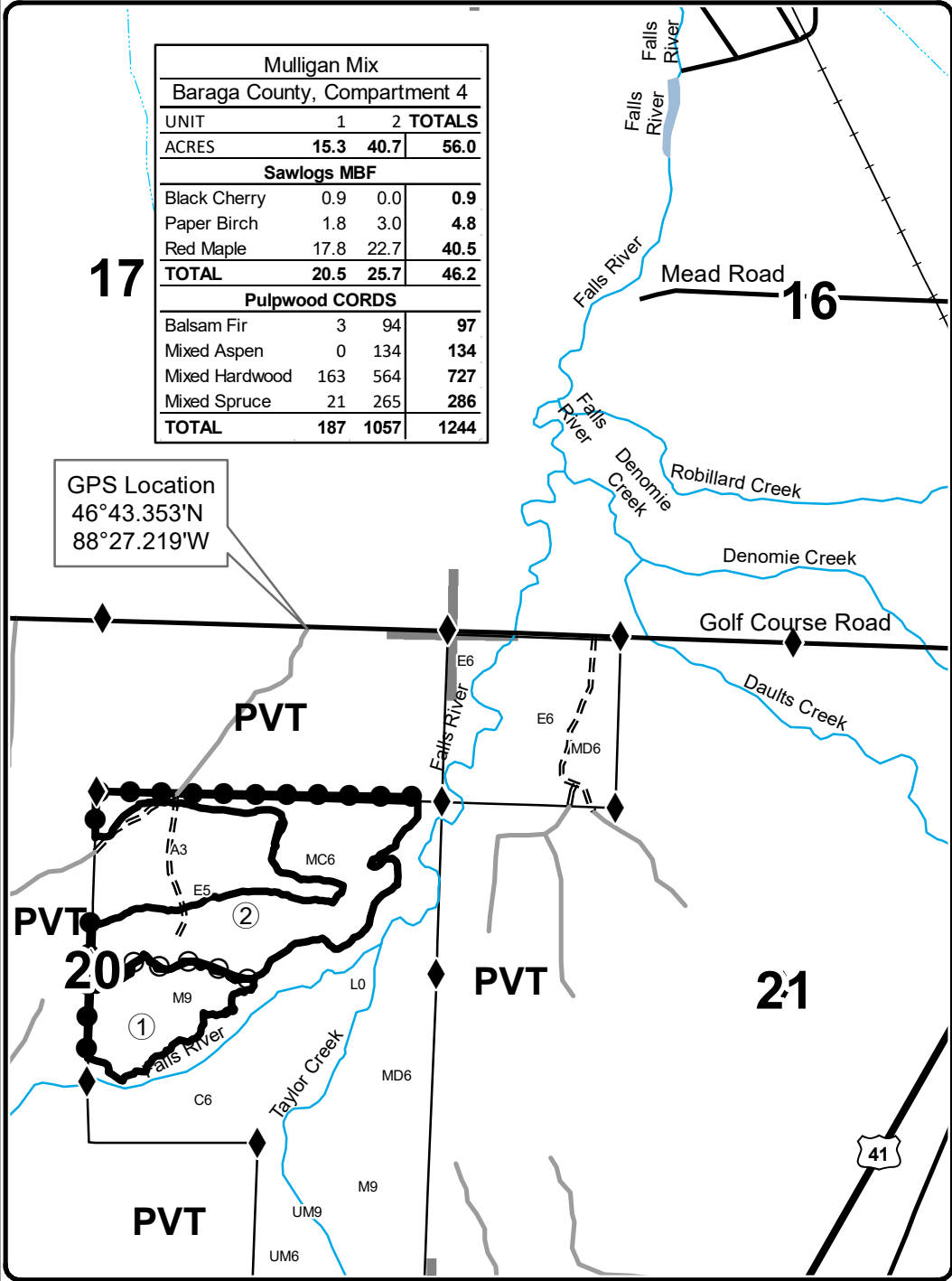
16



Legend

- ◆ Survey Corners
- Highways
- Secondary Forest Road
- == Forest Access Route
- Paved Road
- Private
- ⋯ Intermittent Stream
- Perennial River
- Lakes and Rivers
- Against State (Red)
- Payment Unit (Red)
- Private Line (Blue)

GPS Location
46°43.353'N
88°27.219'W



Locator Map 1:200,000

