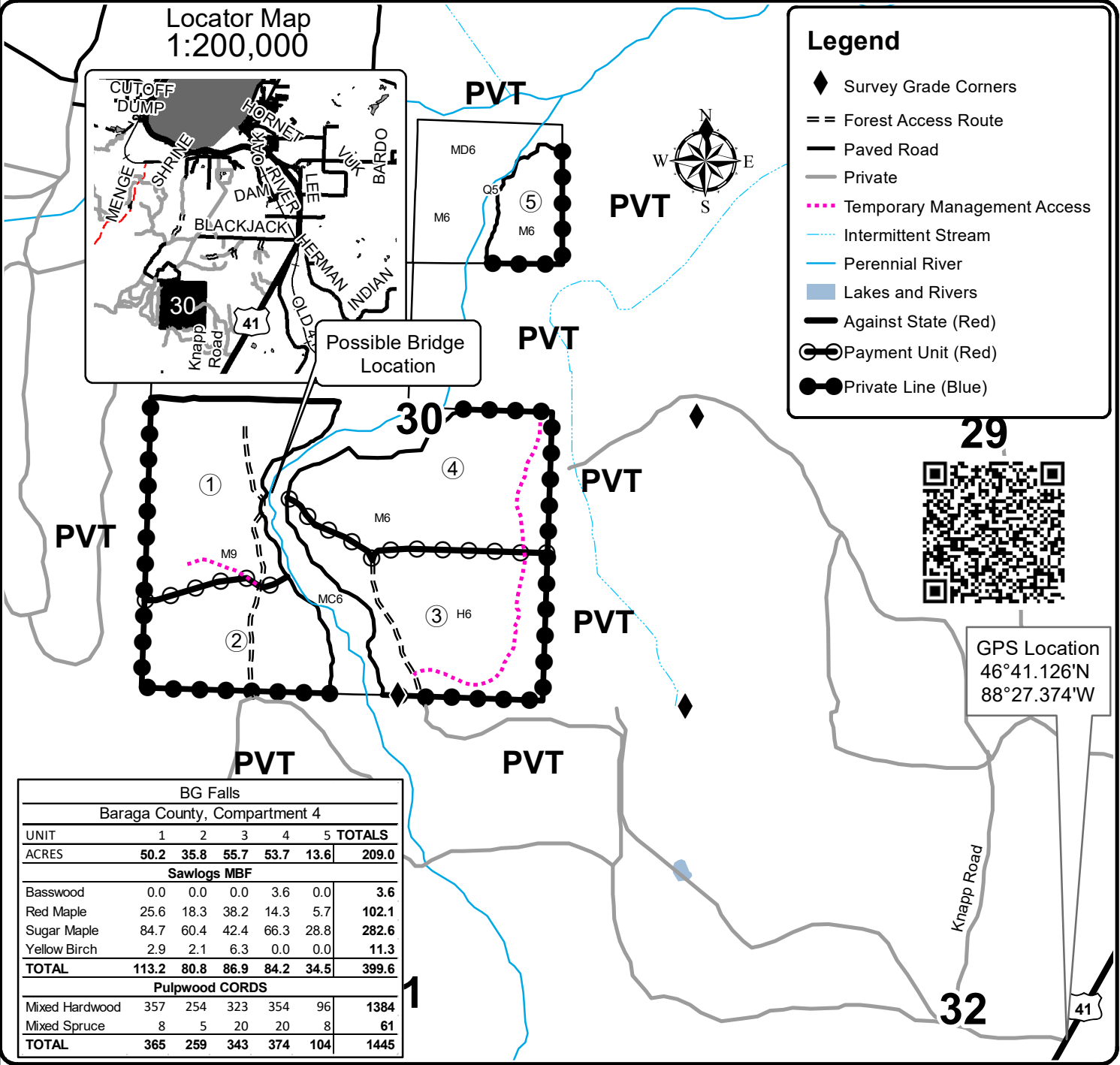




TIMBER SALE MAP

This information provided by authority of Part 525, 1994 PA 451, as amended.

Forest Management Unit Baraga		County Baraga	Mapped By Carlson	Date 4/5/2023	Page 1	of 1
Township 50N	Range 33W	Section(s) and Subdivision(s) Sec 30 - S1/2NW, NWNE, SW, W1/2SE		Scale 1:15,840		
Cover Type				Density		
A = Aspen	H = Hemlock	N = Marsh	U = Upland Brush	0 = Non Stocked	5 = Pole Timber Medium	
B = Paper Birch	J = Jack Pine	O = Oak	UM = Upland Mixed	1 = Seedling Sapling Poor	6 = Pole Timber Well	
C = Cedar	L = Lowland Brush	P = Lowland Poplar	V = Bog or Marsh	2 = Seedling Sapling Medium	7 = Saw Timber Poor	
D = Treed Bog	LM = Lowland Mixed	Q = Mixed Swamp Conifer	W = White Pine	3 = Seedling Sapling Well	8 = Saw Timber Medium	
E = Swamp Hdwoods	M = Mpl, Bch, Brch	R = Red Pine	X = Non Stocked	4 = Pole Timber Poor	9 = Saw Timber Well	
F = Spruce Fir	MC = Mixed Conifer	S = Black Spruce	Z = Water			
G = Grass	MD = Mixed Deciduous	T = Tamarack				



BG Falls						
Baraga County, Compartment 4						
UNIT	1	2	3	4	5	TOTALS
ACRES	50.2	35.8	55.7	53.7	13.6	209.0
Sawlogs MBF						
Basswood	0.0	0.0	0.0	3.6	0.0	3.6
Red Maple	25.6	18.3	38.2	14.3	5.7	102.1
Sugar Maple	84.7	60.4	42.4	66.3	28.8	282.6
Yellow Birch	2.9	2.1	6.3	0.0	0.0	11.3
TOTAL	113.2	80.8	86.9	84.2	34.5	399.6
Pulpwood CORDS						
Mixed Hardwood	357	254	323	354	96	1384
Mixed Spruce	8	5	20	20	8	61
TOTAL	365	259	343	374	104	1445

