



TIMBER SALE MAP

This information provided by authority of Part 525, 1994 PA 451, as amended.

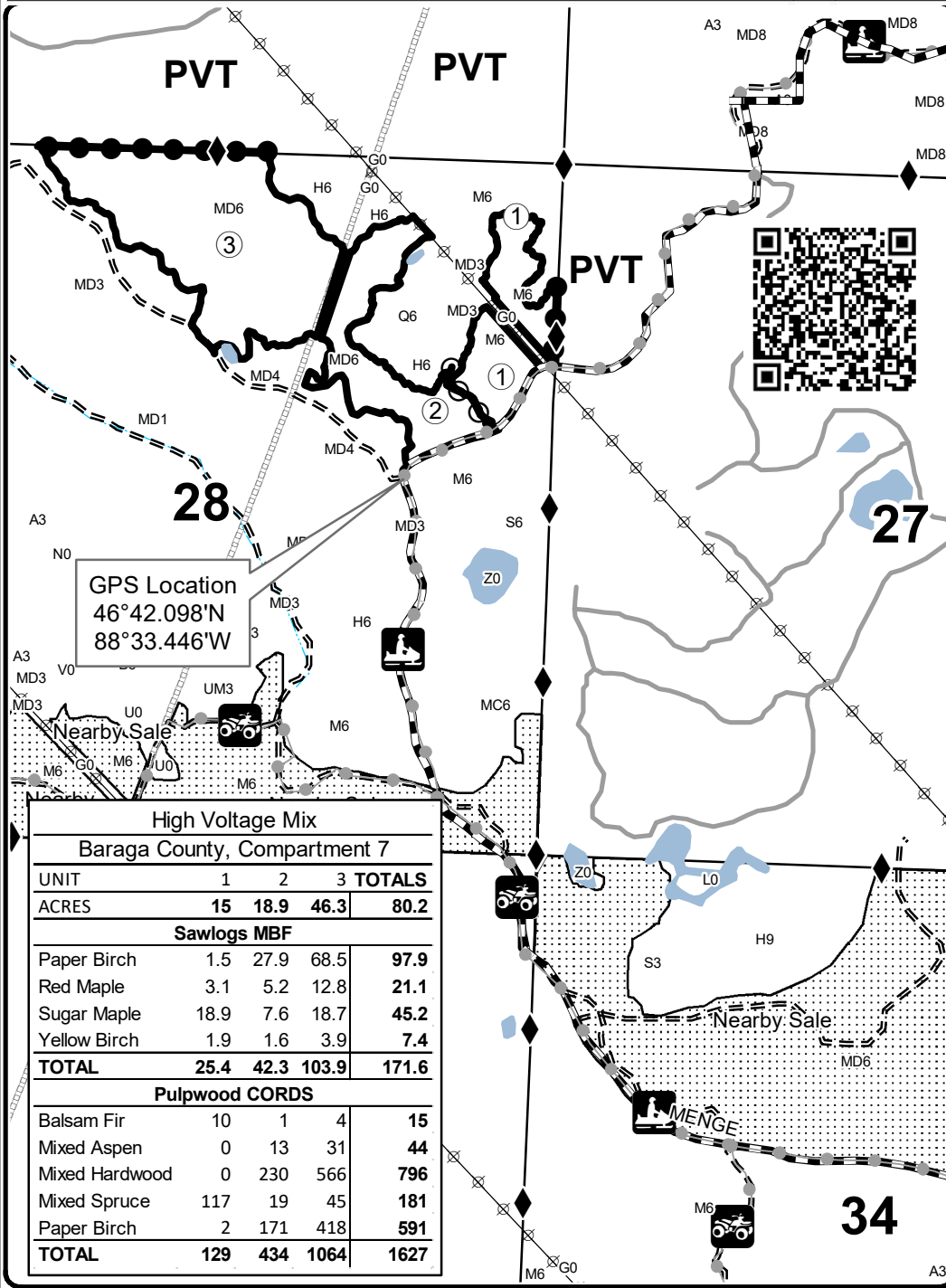
Forest Management Unit Baraga		County Baraga	Mapped By Carlson	Date 11/10/2023	Page 1	of 1
Township 50N	Range 34W	Section(s) and Subdivision(s) Section 28 - E1/2NW, NE		Scale 1:15,840		
Cruised By Baraga Staff						

Cover Type

A = Aspen	H = Hemlock	N = Marsh	U = Upland Brush
B = Paper Birch	J = Jack Pine	O = Oak	UM = Upland Mixed
C = Cedar	L = Lowland Brush	P = Lowland Poplar	V = Bog or Marsh
D = Treed Bog	LM = Lowland Mixed	Q = Mixed Swamp Conifer	W = White Pine
E = Swamp Hdwoods	M = Mpl, Bch, Brch	R = Red Pine	X = Non Stocked
F = Spruce Fir	MC = Mixed Conifer	S = Black Spruce	Z = Water
G = Grass	MD = Mixed Deciduous	T = Tamarack	

Density

0 = Non Stocked	5 = Pole Timber Medium
1 = Seedling Sapling Poor	6 = Pole Timber Well
2 = Seedling Sapling Medium	7 = Saw Timber Poor
3 = Seedling Sapling Well	8 = Saw Timber Medium
4 = Pole Timber Poor	9 = Saw Timber Well



Legend

- Recreational Trail
- Survey Corners
- Forest Access Route
- County Road - Seasonal
- Private
- Intermittent Stream
- Perennial River
- Lakes and Rivers
- Against State (Red)
- Payment Unit (Red)
- Private Line (Blue)
- Nearby Timber Sales
- Pipeline
- Powerline

GPS Location
46°42.098'N
88°33.446'W

High Voltage Mix				
Baraga County, Compartment 7				
UNIT	1	2	3	TOTALS
ACRES	15	18.9	46.3	80.2
Sawlogs MBF				
Paper Birch	1.5	27.9	68.5	97.9
Red Maple	3.1	5.2	12.8	21.1
Sugar Maple	18.9	7.6	18.7	45.2
Yellow Birch	1.9	1.6	3.9	7.4
TOTAL	25.4	42.3	103.9	171.6
Pulpwood CORDS				
Balsam Fir	10	1	4	15
Mixed Aspen	0	13	31	44
Mixed Hardwood	0	230	566	796
Mixed Spruce	117	19	45	181
Paper Birch	2	171	418	591
TOTAL	129	434	1064	1627

Locator Map 1:200,000

