



TIMBER SALE MAP

This information provided by authority of Part 525, 1994 PA 451, as amended.

| | | |
|---------------------------------|---------------------------|----------------|
| Sale Number 11-001-24 | Date 05/25/2024 | |
| Scale 1:24,000 | Page 1 | Of 1 |

| | | |
|--|-------------------------|---------------------------------|
| Forest Management Unit Baraga Mgt Unit | County Baraga | Mapped By: Carlson |
| | | Cruised By: Baraga Staff |

| | | |
|------------------------------|---------------------|---|
| Township 48N / 49N | Range 34W | Section(s) and Subdivision(s) SENW,NESW,S1/2SW; Sec. 5 NENW,NWNE; Sec. 21 S1/2SE; Sec. 22 SWSW; Sec. 27 NWNW; Sec. 28 N1/2NE,SWNE; Sec. 32 |
|------------------------------|---------------------|---|

Cover Type

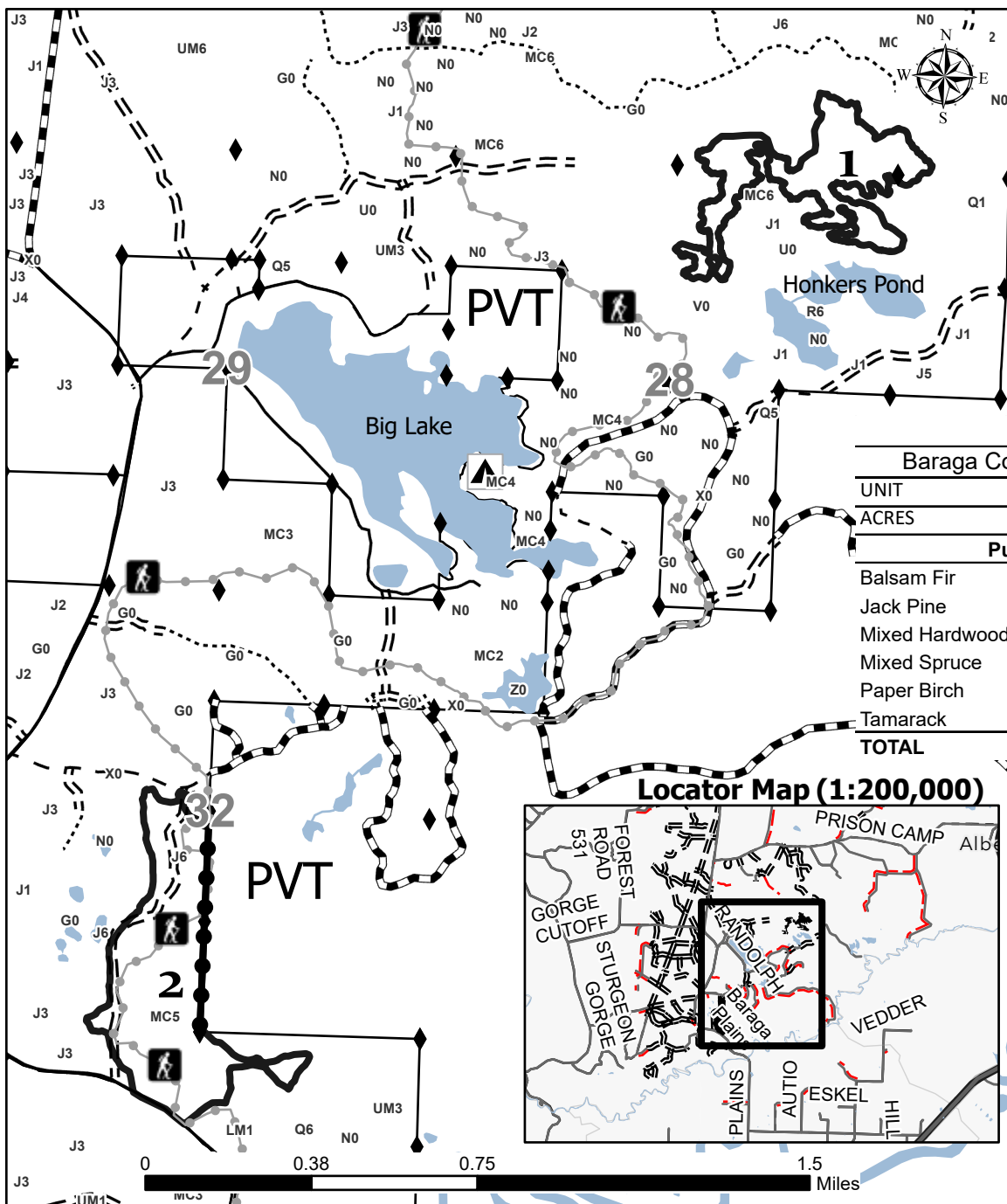
| | | | |
|---------------------|-------------------------|-------------------------|------------------------|
| A = Aspen | J = Jack Pine | O = Oak | U = Upland Brush |
| B = Paper Birch | K = Rock | P = Lowland Poplar | UM = Upland Mix Forest |
| C = Cedar | L = Lowland Brush | Q = Mixed Swamp Conifer | V = Bog or Marsh |
| D = Treed Bog | LM = Lowland Mix Forest | R = Red Pine | W = White Pine |
| E = Swamp Hardwoods | M = Maple, Beech, Birch | S = Black Spruce | X = Non Stocked |
| F = Spruce/Fir | MC = Mixed Conifer | T = Tamarack | Y = Sand |
| G = Grass | MD = Mixed Deciduous | Z = Water | |
| H = Hemlock | N = Marsh | | |

Density

| | |
|-----------------------------|------------------------|
| 0 = Non Stocked | 5 = Pole Timber Medium |
| 1 = Seedling Sapling Poor | 6 = Pole Timber Well |
| 2 = Seedling Sapling Medium | 7 = Saw Timber Poor |
| 3 = Seedling Sapling Well | 8 = Saw Timber Medium |
| 4 = Pole Timber Poor | 9 = Saw Timber Well |

Legend

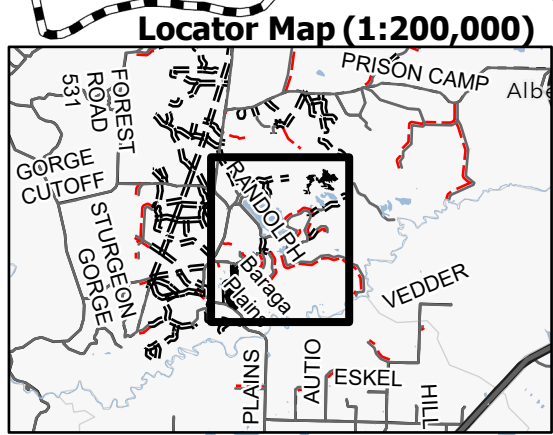
- Against State (Red) Stand
- State Forests
- Private Line (Blue)
- Recreational Trail
- Primary Forest Road
- Forest Access Route
- Administrative Access Only
- Paved Road
- Government Gravel/Dirt
- Private Gravel/Dirt
- Survey Grade Corner
- State Forest Campground



Fungal Foot

Baraga County, Compartment 11

| UNIT | 1 | 2 | TOTALS |
|-----------------------|-------------|------------|-------------|
| ACRES | 52.2 | 86.4 | 138.6 |
| Pulpwood CORDS | | | |
| Balsam Fir | 6 | 0 | 6 |
| Jack Pine | 803 | 771 | 1574 |
| Mixed Hardwood | 2 | 3 | 5 |
| Mixed Spruce | 306 | 155 | 461 |
| Paper Birch | 0 | 26 | 26 |
| Tamarack | 0 | 12 | 12 |
| TOTAL | 1117 | 967 | 2084 |



Use QR Code to open Map in App

