



TIMBER SALE MAP

This information provided by authority of Part 525, 1994 PA 451, as amended.

Sale Number
11-001-25

Date
05/26/2025

| | | |
|------------------------|--------|------------------------------|
| Forest Management Unit | County | Mapped By: Dorvinen |
| Baraga Mgt Unit | Baraga | Cruised By: Dorvinen, Hansen |

| | | |
|----------|------|----|
| Scale | Page | Of |
| 1:15,840 | 1 | 1 |

| | | |
|----------|-------|--|
| Township | Range | Section(s) and |
| 51N | 30W | Subdivision(s) Sec. 5 SW; Sec. 6 NWSW,S1/2SW,SE; |

Cover Type

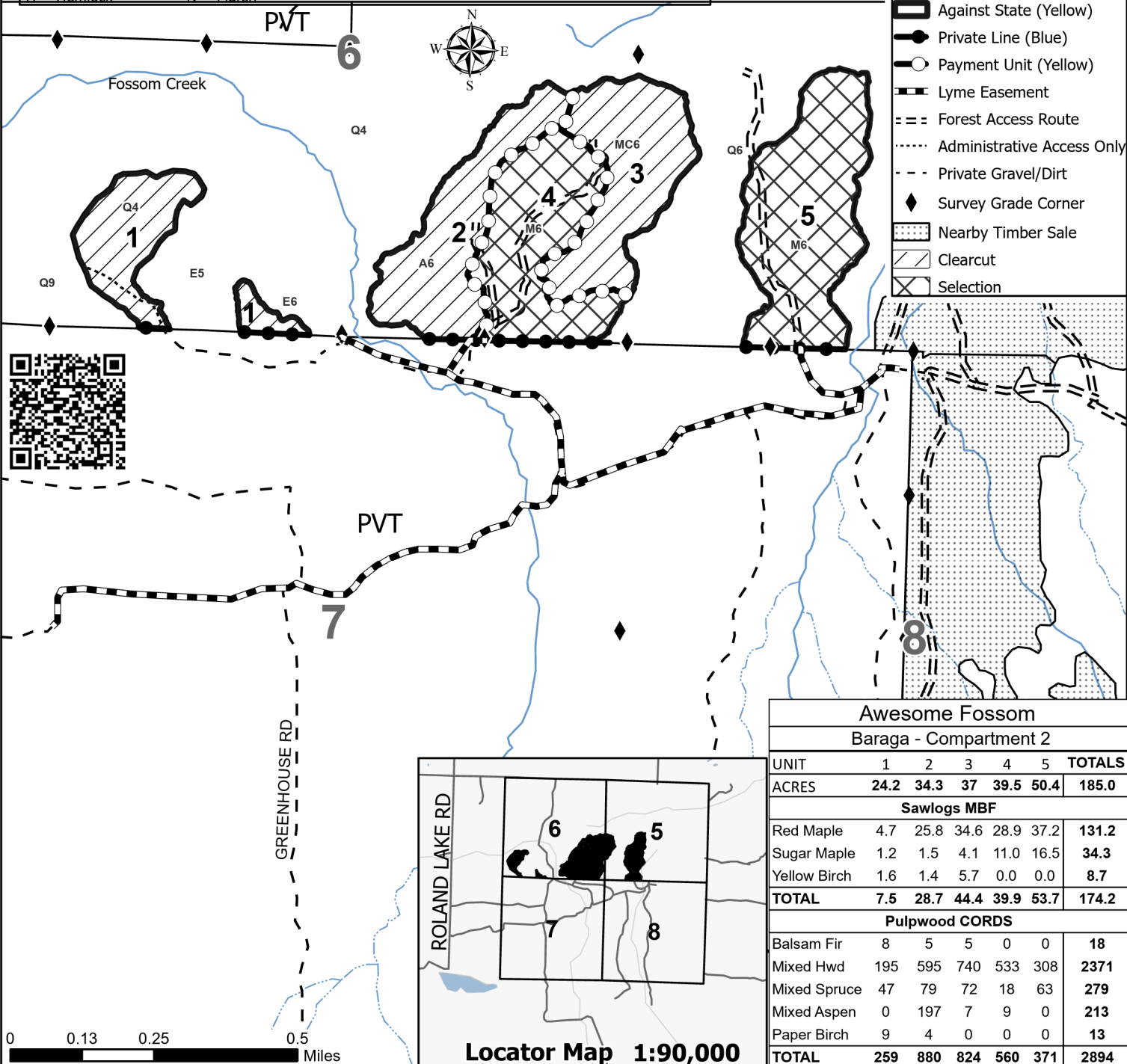
| | | | |
|---------------------|-------------------------|-------------------------|------------------------|
| A = Aspen | J = Jack Pine | O = Oak | U = Upland Brush |
| B = Paper Birch | K = Rock | P = Lowland Poplar | UM = Upland Mix Forest |
| C = Cedar | L = Lowland Brush | Q = Mixed Swamp Conifer | V = Bog or Marsh |
| D = Treed Bog | LM = Lowland Mix Forest | R = Red Pine | W = White Pine |
| E = Swamp Hardwoods | M = Maple, Beech, Birch | S = Black Spruce | X = Non Stocked |
| F = Spruce/Fir | MC = Mixed Conifer | T = Tamarack | Y = Sand |
| G = Grass | MD = Mixed Deciduous | | Z = Water |
| H = Hemlock | N = Marsh | | |

Density

| | |
|-----------------------------|------------------------|
| 0 = Non Stocked | 5 = Pole Timber Medium |
| 1 = Seedling Sapling Poor | 6 = Pole Timber Well |
| 2 = Seedling Sapling Medium | 7 = Saw Timber Poor |
| 3 = Seedling Sapling Well | 8 = Saw Timber Medium |
| 4 = Pole Timber Poor | 9 = Saw Timber Well |

Legend

- Against State (Yellow)
- Private Line (Blue)
- Payment Unit (Yellow)
- Lyme Easement
- Forest Access Route
- Administrative Access Only
- Private Gravel/Dirt
- Survey Grade Corner
- Nearby Timber Sale
- Clearcut
- Selection



Locator Map 1:90,000

Awesome Fossom
Baraga - Compartment 2

| UNIT | 1 | 2 | 3 | 4 | 5 | TOTALS |
|----------------|------|------|------|------|------|--------|
| ACRES | 24.2 | 34.3 | 37 | 39.5 | 50.4 | 185.0 |
| Sawlogs MBF | | | | | | |
| Red Maple | 4.7 | 25.8 | 34.6 | 28.9 | 37.2 | 131.2 |
| Sugar Maple | 1.2 | 1.5 | 4.1 | 11.0 | 16.5 | 34.3 |
| Yellow Birch | 1.6 | 1.4 | 5.7 | 0.0 | 0.0 | 8.7 |
| TOTAL | 7.5 | 28.7 | 44.4 | 39.9 | 53.7 | 174.2 |
| Pulpwood CORDS | | | | | | |
| Balsam Fir | 8 | 5 | 5 | 0 | 0 | 18 |
| Mixed Hwd | 195 | 595 | 740 | 533 | 308 | 2371 |
| Mixed Spruce | 47 | 79 | 72 | 18 | 63 | 279 |
| Mixed Aspen | 0 | 197 | 7 | 9 | 0 | 213 |
| Paper Birch | 9 | 4 | 0 | 0 | 0 | 13 |
| TOTAL | 259 | 880 | 824 | 560 | 371 | 2894 |