



TIMBER SALE MAP

This information provided by authority of Part 525, 1994 PA 451, as amended.

Sale Number 12-803-26	Date 06/03/2026
Scale 1:15,840	Page 1
	Of 1

Forest Management Unit Crystal Falls Mgt Unit	County Iron	Mapped By: Collins
		Cruised By: Collins, Sullivan, Yeo

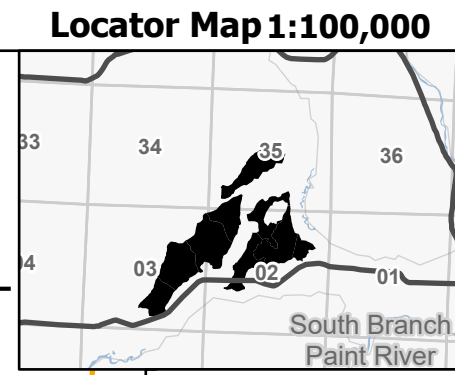
Township 44N / 45N	Range 36W	Section(s) and Subdivision(s) Sec. 2 NW,NE,N1/2SW; Sec. 3 NENE,S1/2NE,SESW,N1/2SE,SWSE; Sec. 35 SENW,SW,W1/2SE;
------------------------------	---------------------	--

Cover Type

A = Aspen	J = Jack Pine	O = Oak	U = Upland Brush
B = Paper Birch	K = Rock	P = Lowland Poplar	UM = Upland Mix Forest
C = Cedar	L = Lowland Brush	Q = Mixed Swamp Conifer	V = Bog or Marsh
D = Treed Bog	LM = Lowland Mix Forest	R = Red Pine	W = White Pine
E = Swamp Hardwoods	M = Maple, Beech, Birch	S = Black Spruce	X = Non Stocked
F = Spruce/Fir	MC = Mixed Conifer	T = Tamarack	Y = Sand
G = Grass	MD = Mixed Deciduous	Z = Water	
H = Hemlock	N = Marsh		

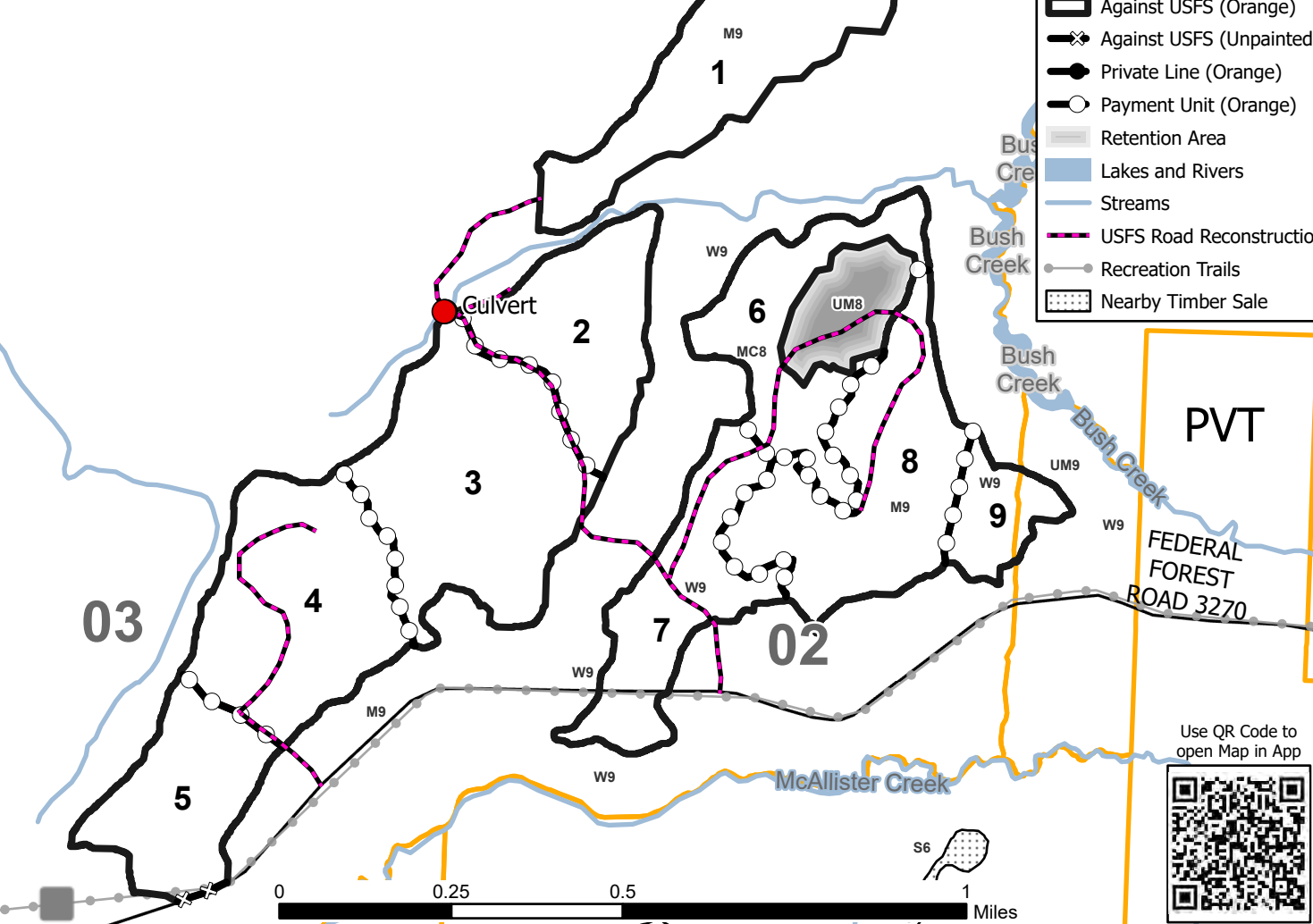
Density

0 = Non Stocked	5 = Pole Timber Medium
1 = Seedling Sapling Poor	6 = Pole Timber Well
2 = Seedling Sapling Medium	7 = Saw Timber Poor
3 = Seedling Sapling Well	8 = Saw Timber Medium
4 = Pole Timber Poor	9 = Saw Timber Well



GNA2 East Bush Tiger
Iron - Compartment 7903062 and 7903064

UNIT	1	2	3	4	5	6	7	8	9	TOTALS
ACRES	45.9	35.9	65.2	55.5	32.5	34.2	36.1	54.7	13.5	373.5
Sawlogs MBF										
Black Cherry	8.1	6.4	11.6	9.8	5.8	0.0	0.0	9.7	0.0	51.4
Red Maple	11.1	8.7	15.8	13.5	7.9	0.0	0.0	13.3	0.0	70.3
Sugar Maple	10.3	8.1	14.7	12.5	7.3	0.0	0.0	12.3	0.0	65.2
Yellow Birch	5.4	4.2	7.7	6.6	3.8	0.0	0.0	6.5	0.0	34.2
TOTAL	34.9	27.4	49.8	42.4	24.8	0.0	0.0	41.8	0.0	221.1
Pulpwood CORDS										
Balsam Fir	0	0	0	0	0	19	20	0	8	47
Mixed Aspen	0	0	0	0	0	151	160	0	60	371
Mixed Hardwood	464	364	659	562	330	290	305	554	115	3643
Mixed Spruce	0	0	0	0	0	16	16	0	6	38
Tamarack	0	0	0	0	0	11	11	0	4	26
White Pine	0	0	0	0	0	173	184	0	68	425
TOTAL	464	364	659	562	330	660	696	554	261	4503



Legend

- Against USFS (Orange)
- Against USFS (Unpainted)
- Private Line (Orange)
- Payment Unit (Orange)
- Retention Area
- Lakes and Rivers
- Streams
- USFS Road Reconstruction
- Recreation Trails
- Nearby Timber Sale

Use QR Code to open Map in App

