



# TIMBER SALE MAP

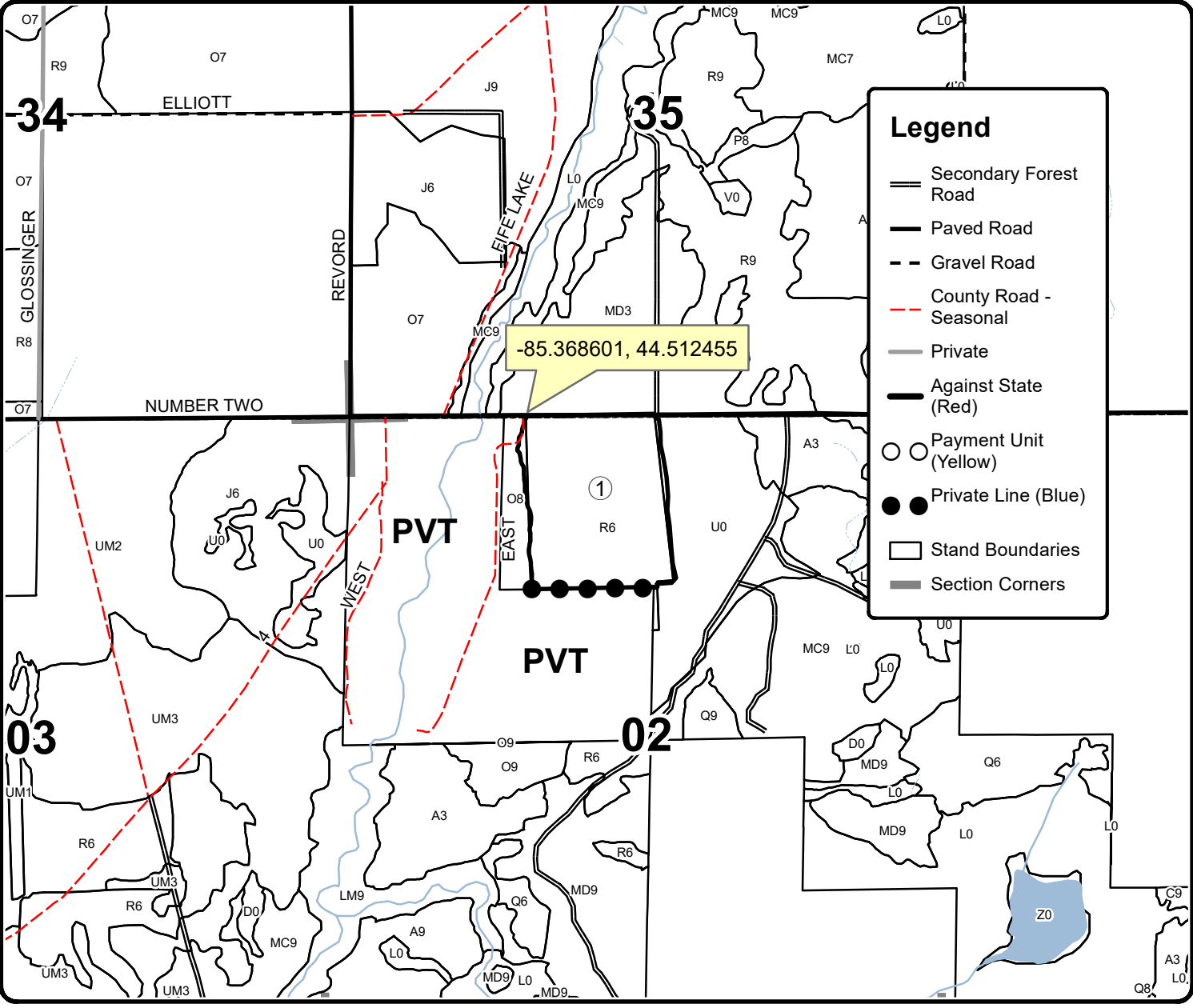
This information provided by authority of Part 525, 1994 PA 451, as amended.

Forest Management Unit Cadillac Management Unit		County Wexford	Mapped By Krugh	Date 08/19/2023	Page 1	of 1
Township 24N 25N	Range 09W	Section(s) and Subdivision(s) Sec 2: NENW, NWNE, Sec 35: SESW			Scale 1:15,840	

Cover Type				Density	
A = Aspen	H = Hemlock	N = Marsh	U = Upland Brush	0 = Non Stocked	5 = Pole Timber Medium
B = Paper Birch	J = Jack Pine	O = Oak	UM = Upland Mixed	1 = Seedling Sapling Poor	6 = Pole Timber Well
C = Cedar	L = Lowland Brush	P = Lowland Poplar	V = Bog or Marsh	2 = Seedling Sapling Medium	7 = Saw Timber Poor
D = Treed Bog	LM = Lowland Mixed	Q = Mixed Swamp Conifer	W = White Pine	3 = Seedling Sapling Well	8 = Saw Timber Medium
E = Swamp Hdwoods	M = Mpl, Bch, Brch	R = Red Pine	X = Non Stocked	4 = Pole Timber Poor	9 = Saw Timber Well
F = Spruce Fir	MC = Mixed Conifer	S = Black Spruce	Z = Water		
G = Grass	MD = Mixed Deciduous	T = Tamarack			

**PU Acres**  
1 41.2

## Backstop Red Pine Compartment 126 41.2 Acres



**Legend**

- Secondary Forest Road (thin solid line)
- Paved Road (thick solid line)
- Gravel Road (dashed line)
- County Road - Seasonal (red dashed line)
- Private (grey line)
- Against State (Red) (thick black line)
- Payment Unit (Yellow) (circle with '1')
- Private Line (Blue) (circle with '●')
- Stand Boundaries (thin solid line)
- Section Corners (thick grey line)

