



TIMBER SALE MAP

This information provided by authority of Part 525, 1994 PA 451, as amended.

Forest Management Unit Escanaba FMU		County Dickinson	Mapped By Andy Church	Date 08/29/2023	Page 1	of 1
Township 43N	Range 27W	Section(s) and Subdivision(s) Sec 16: N1/2NE Sec 9: S1/2NW,SWNE,E1/2SW,NWSE,S1/2SE		Scale 1:15,840		

Cover Type				Density	
A = Aspen	H = Hemlock	N = Marsh	U = Upland Brush	0 = Non Stocked	5 = Pole Timber Medium
B = Paper Birch	J = Jack Pine	O = Oak	UM = Upland Mixed	1 = Seedling Sapling Poor	6 = Pole Timber Well
C = Cedar	L = Lowland Brush	P = Lowland Poplar	V = Bog or Marsh	2 = Seedling Sapling Medium	7 = Saw Timber Poor
D = Treed Bog	LM = Lowland Mixed	Q = Mixed Swamp Conifer	W = White Pine	3 = Seedling Sapling Well	8 = Saw Timber Medium
E = Swamp Hdwoods	M = Mpl, Bch, Brch	R = Red Pine	X = Non Stocked	4 = Pole Timber Poor	9 = Saw Timber Well
F = Spruce Fir	MC = Mixed Conifer	S = Black Spruce	Z = Water		
G = Grass	MD = Mixed Deciduous	T = Tamarack			

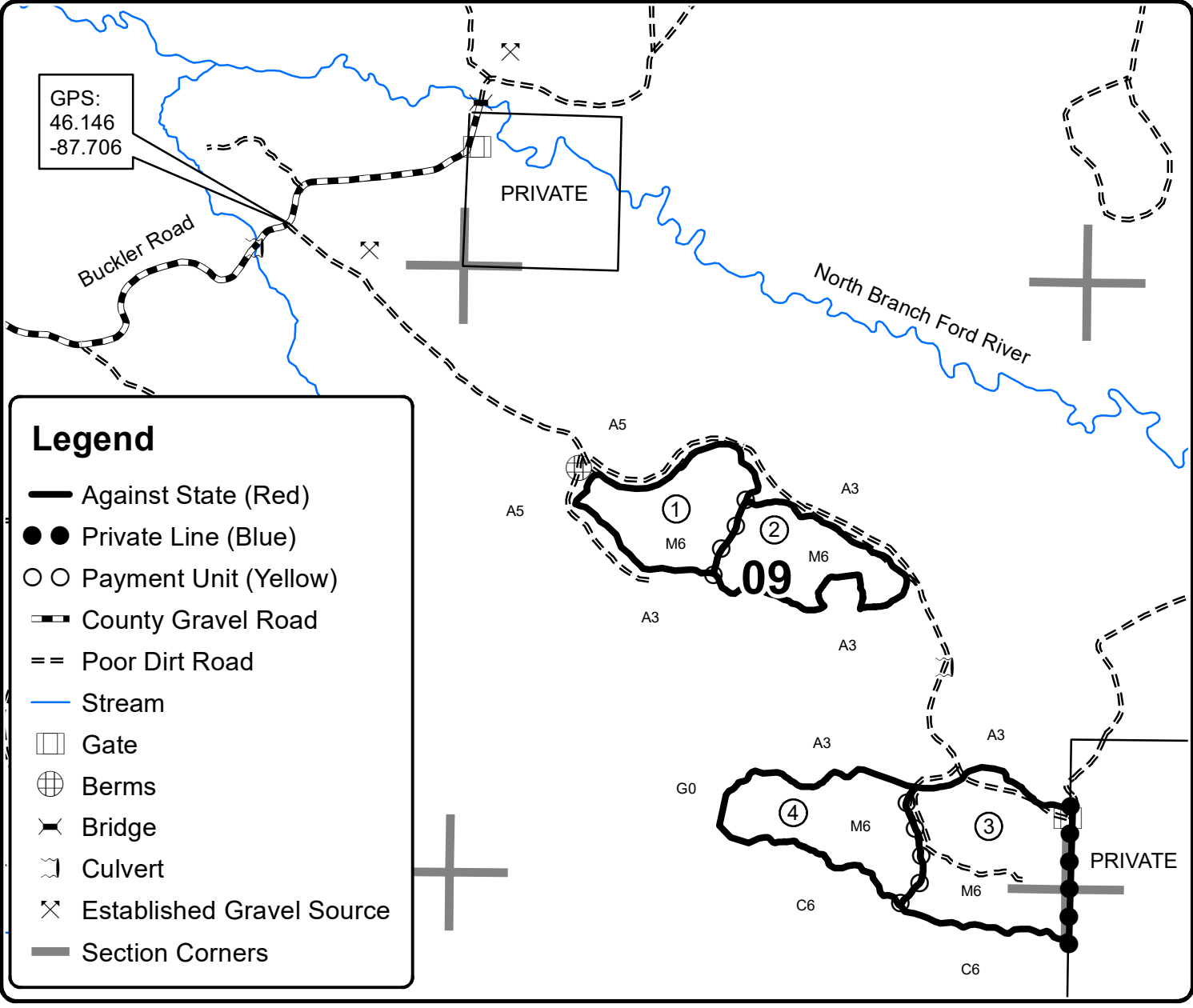
PU	Acres	PU	Acres
1	22.8	4	26.7
2	21.0		
3	37.5		

Onlooking Owls

Compartment 27

108.0 Acres

QR code for GeoRef PDF



Legend

- Against State (Red)
- Private Line (Blue)
- Payment Unit (Yellow)
- County Gravel Road
- Poor Dirt Road
- Stream
- Gate
- Berms
- Bridge
- Culvert
- Established Gravel Source
- Section Corners

