



TIMBER SALE MAP

This information provided by authority of Part 525, 1994 PA 451, as amended.

| | | |
|---------------------------------|---------------------------|----------------|
| Sale Number 12-057-26 | Date 04/30/2026 | |
| Scale 1:15,840 | Page 1 | Of 1 |

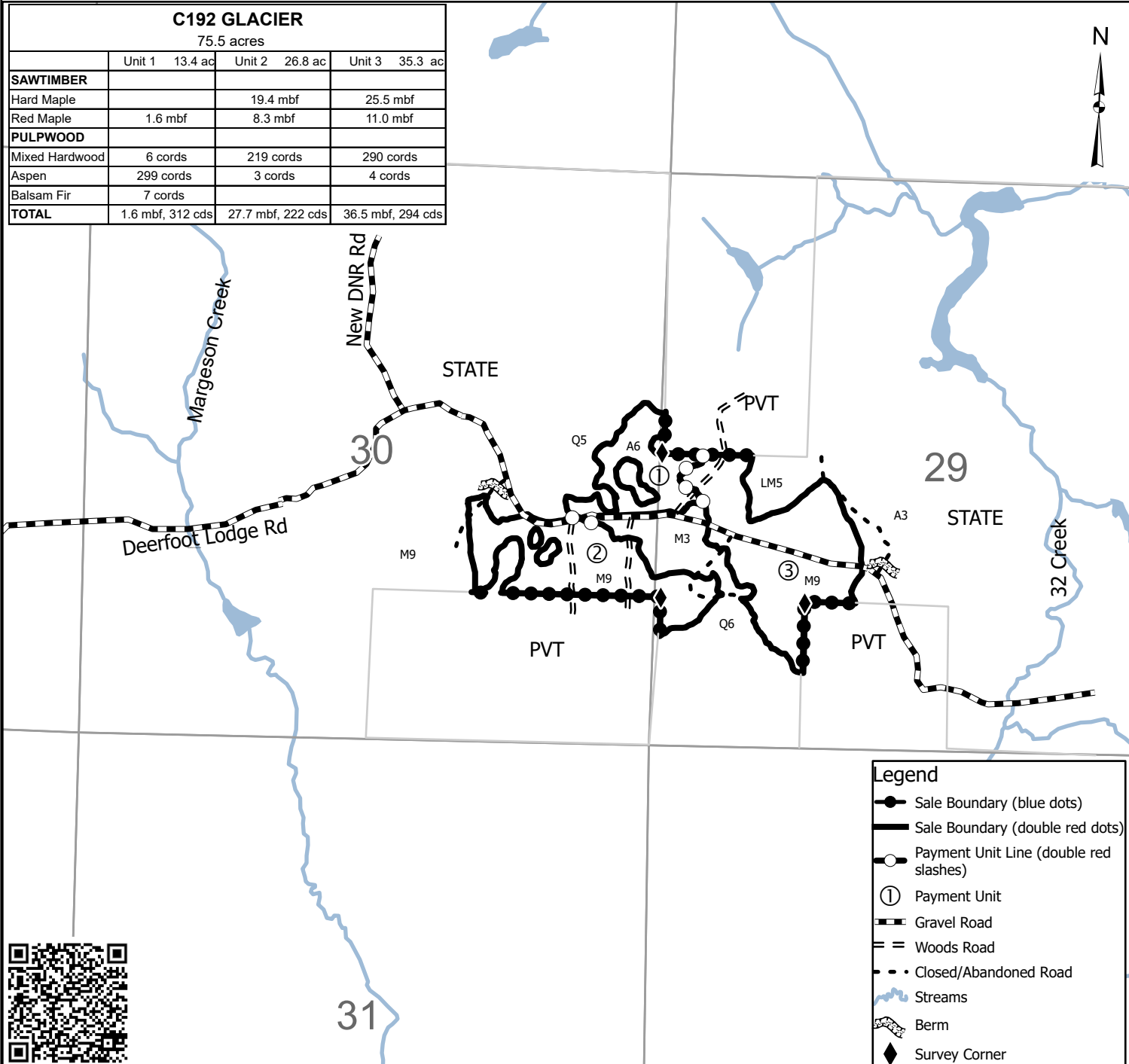
| | | |
|--|----------------|------------------|
| Forest Management Unit Crystal Falls Mgt Unit | County Iron | Mapped By: RICE |
| | | Cruised By: RICE |

| | | |
|-----------------|--------------|--|
| Township 45N | Range 31W | Section(s) and Subdivision(s) Sec. 29 N1/2SW,SWSW; Sec. 30 SENE,N1/2SE; |
|-----------------|--------------|--|

| Cover Type | | | |
|---------------------|-------------------------|-------------------------|------------------------|
| A = Aspen | J = Jack Pine | O = Oak | U = Upland Brush |
| B = Paper Birch | K = Rock | P = Lowland Poplar | UM = Upland Mix Forest |
| C = Cedar | L = Lowland Brush | Q = Mixed Swamp Conifer | V = Bog or Marsh |
| D = Treed Bog | LM = Lowland Mix Forest | R = Red Pine | W = White Pine |
| E = Swamp Hardwoods | M = Maple, Beech, Birch | S = Black Spruce | X = Non Stocked |
| F = Spruce/Fir | MC = Mixed Conifer | T = Tamarack | Y = Sand |
| G = Grass | MD = Mixed Deciduous | | Z = Water |
| H = Hemlock | N = Marsh | | |

| Density | |
|-----------------------------|------------------------|
| 0 = Non Stocked | 5 = Pole Timber Medium |
| 1 = Seedling Sapling Poor | 6 = Pole Timber Well |
| 2 = Seedling Sapling Medium | 7 = Saw Timber Poor |
| 3 = Seedling Sapling Well | 8 = Saw Timber Medium |
| 4 = Pole Timber Poor | 9 = Saw Timber Well |

| C192 GLACIER | | | |
|------------------|------------------|-------------------|-------------------|
| 75.5 acres | | | |
| | Unit 1 13.4 ac | Unit 2 26.8 ac | Unit 3 35.3 ac |
| SAWTIMBER | | | |
| Hard Maple | | 19.4 mbf | 25.5 mbf |
| Red Maple | 1.6 mbf | 8.3 mbf | 11.0 mbf |
| PULPWOOD | | | |
| Mixed Hardwood | 6 cords | 219 cords | 290 cords |
| Aspen | 299 cords | 3 cords | 4 cords |
| Balsam Fir | 7 cords | | |
| TOTAL | 1.6 mbf, 312 cds | 27.7 mbf, 222 cds | 36.5 mbf, 294 cds |



| Legend | |
|--------|--|
| | Sale Boundary (blue dots) |
| | Sale Boundary (double red dots) |
| | Payment Unit Line (double red slashes) |
| | Payment Unit |
| | Gravel Road |
| | Woods Road |
| | Closed/Abandoned Road |
| | Streams |
| | Berm |
| | Survey Corner |

