



TIMBER SALE MAP

This information provided by authority of Part 525, 1994 PA 451, as amended.

Forest Management Unit Crystal Falls	County Dickinson	Mapped By Brolin	Date 09/18/2017	Page 1	of 1
Township 41N	Range 29W	Section(s) and Subdivision(s) SW1/4 and W1/2 SE1/4 Sec. 14, and N1/2 NW1/4 and SE1/4 NW1/4 and NE1/4 Sec. 23, and W1/2 NW1/4 and SE1/4 NW1/4 and N1/2 SW1/4 and N1/2 SE1/4 and SW1/4 NE1/4 Sec. 24	Scale 1:15,840		

Cover Type				Density	
A = Aspen	H = Hemlock	N = Marsh	U = Upland Brush	0 = Non Stocked	5 = Pole Timber Medium
B = Paper Birch	J = Jack Pine	O = Oak	UM = Upland Mixed	1 = Seedling Sapling Poor	6 = Pole Timber Well
C = Cedar	L = Lowland Brush	P = Lowland Poplar	V = Bog or Marsh	2 = Seedling Sapling Medium	7 = Saw Timber Poor
D = Tread Bog	LM = Lowland Mixed	Q = Mixed Swamp Conifer	W = White Pine	3 = Seedling Sapling Well	8 = Saw Timber Medium
E = Swamp Hdwoods	M = Mpl, Bch, Brch	R = Red Pine	X = Non Stocked	4 = Pole Timber Poor	9 = Saw Timber Well
F = Spruce Fir	MC = Mixed Conifer	S = Black Spruce	Z = Water		
G = Grass	MD = Mixed Deciduous	T = Tamarack			

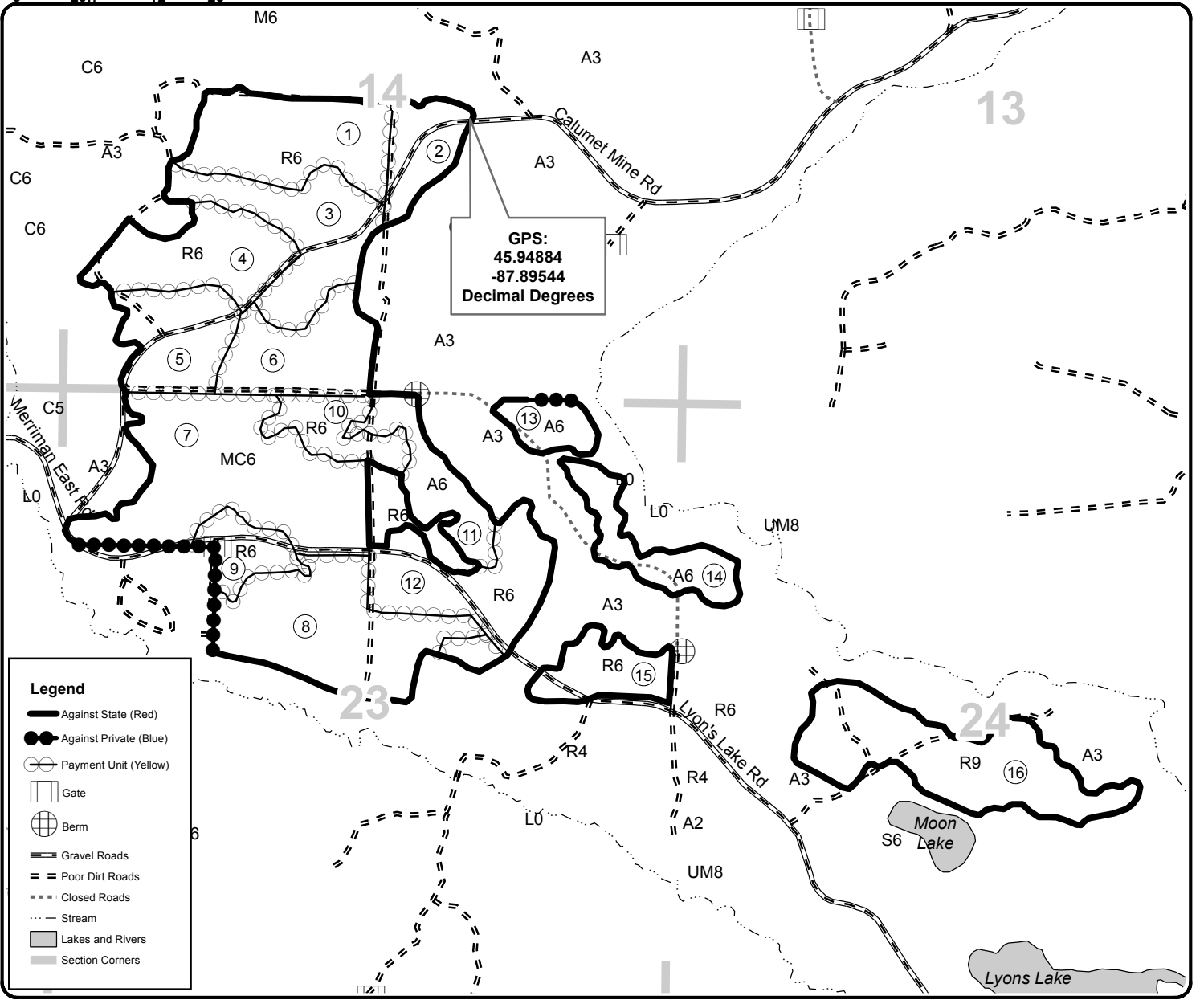
PU Acres PU Acres PU Acres

1	28.3	7	49.9	13	7.1
2	11.3	8	38.1	14	13.8
3	25.8	9	8.1	15	11.1
4	22.4	10	10.8	16	38.1
5	17.7	11	14.2		
6	20.7	12	25		

Mucho Pine

Compartment 77 and 79

342.4 Acres



Legend	
	Against State (Red)
	Against Private (Blue)
	Payment Unit (Yellow)
	Gate
	Berm
	Gravel Roads
	Poor Dirt Roads
	Closed Roads
	Stream
	Lakes and Rivers
	Section Corners

