



TIMBER SALE MAP

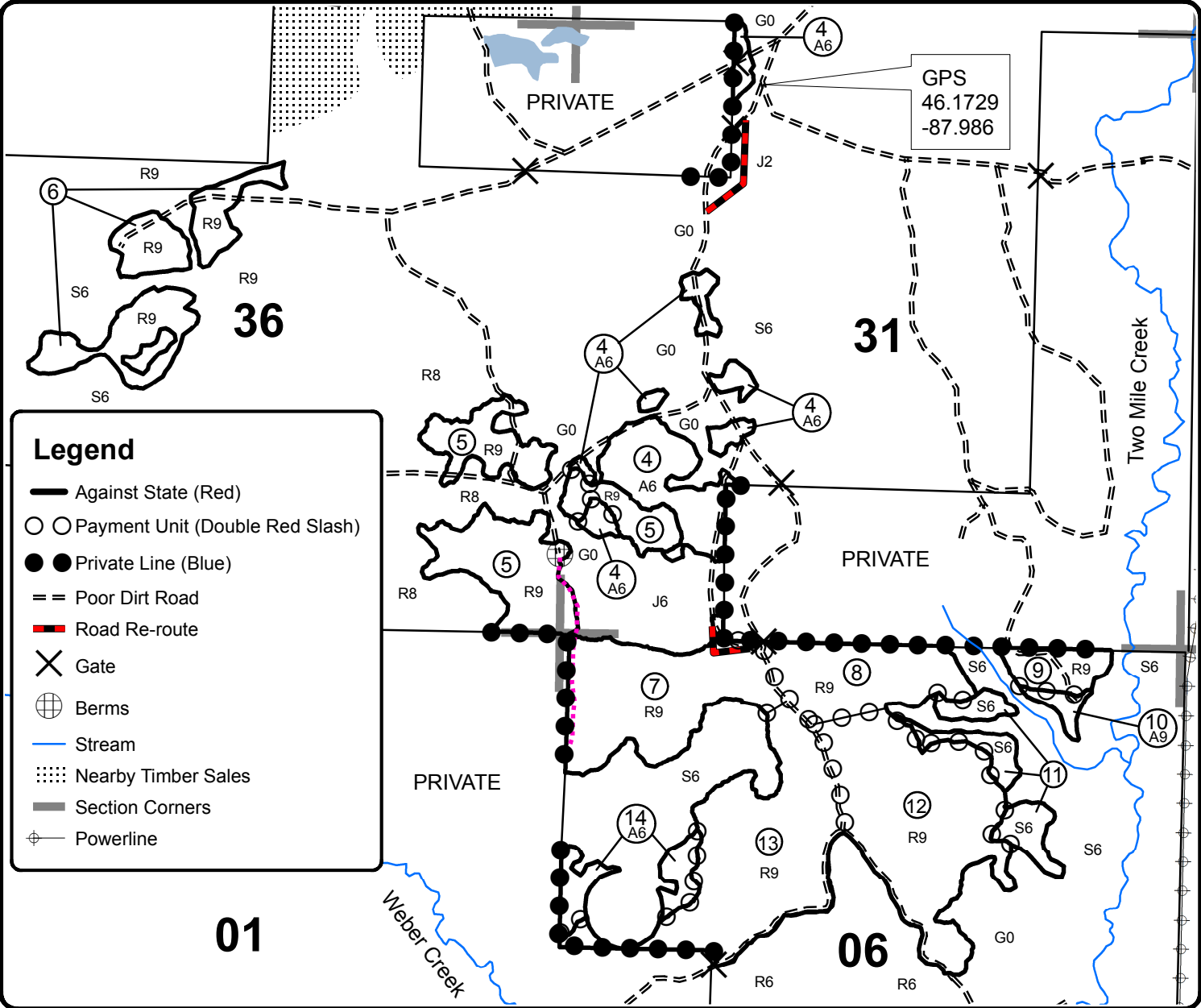
This information provided by authority of Part 525, 1994 PA 451, as amended.

Forest Management Unit Crystal Falls	County Dickinson	Mapped By Sebero	Date 09/03/2019	Page 2	of 2
Township 43N,44N	Range 29W,30W	Section(s) and Subdivision(s) 43N 29W: Sec 6 NW,NE,NESW,NWSE 44N 29W: Sec 30 N1/2NW,SWNW,SESW Sec 31 NENW,SWNW,N1/2SW,SWSW 44N 30W: Sec 25 N1/2NE Sec 36 SENW,SWNE,N1/2SW,E1/2SE	Scale 1:15,840		

Cover Type				Density	
A = Aspen	H = Hemlock	N = Marsh	U = Upland Brush	0 = Non Stocked	5 = Pole Timber Medium
B = Paper Birch	J = Jack Pine	O = Oak	UM = Upland Mixed	1 = Seedling Sapling Poor	6 = Pole Timber Well
C = Cedar	L = Lowland Brush	P = Lowland Poplar	V = Bog or Marsh	2 = Seedling Sapling Medium	7 = Saw Timber Poor
D = Treed Bog	LM = Lowland Mixed	Q = Mixed Swamp Conifer	W = White Pine	3 = Seedling Sapling Well	8 = Saw Timber Medium
E = Swamp Hdwoods	M = Mpl, Bch, Brch	R = Red Pine	X = Non Stocked	4 = Pole Timber Poor	9 = Saw Timber Well
F = Spruce Fir	MC = Mixed Conifer	S = Black Spruce	Z = Water		
G = Grass	MD = Mixed Deciduous	T = Tamarack			

PU	Acres	PU	Acres	PU	Acres
1	46.9	6	24.2	11	11.3
2	6.7	7	32.5	12	46.6
3	13.1	8	20.9	13	44.5
4	26.3	9	6.7	14	7.4
5	36.7	10	2.2		

Weber Pine Compartment 044 326.0 Acres



Legend

- Against State (Red)
- Payment Unit (Double Red Slash)
- Private Line (Blue)
- Poor Dirt Road
- Road Re-route
- Gate
- Berms
- Stream
- Nearby Timber Sales
- Section Corners
- Powerline

