



TIMBER SALE MAP

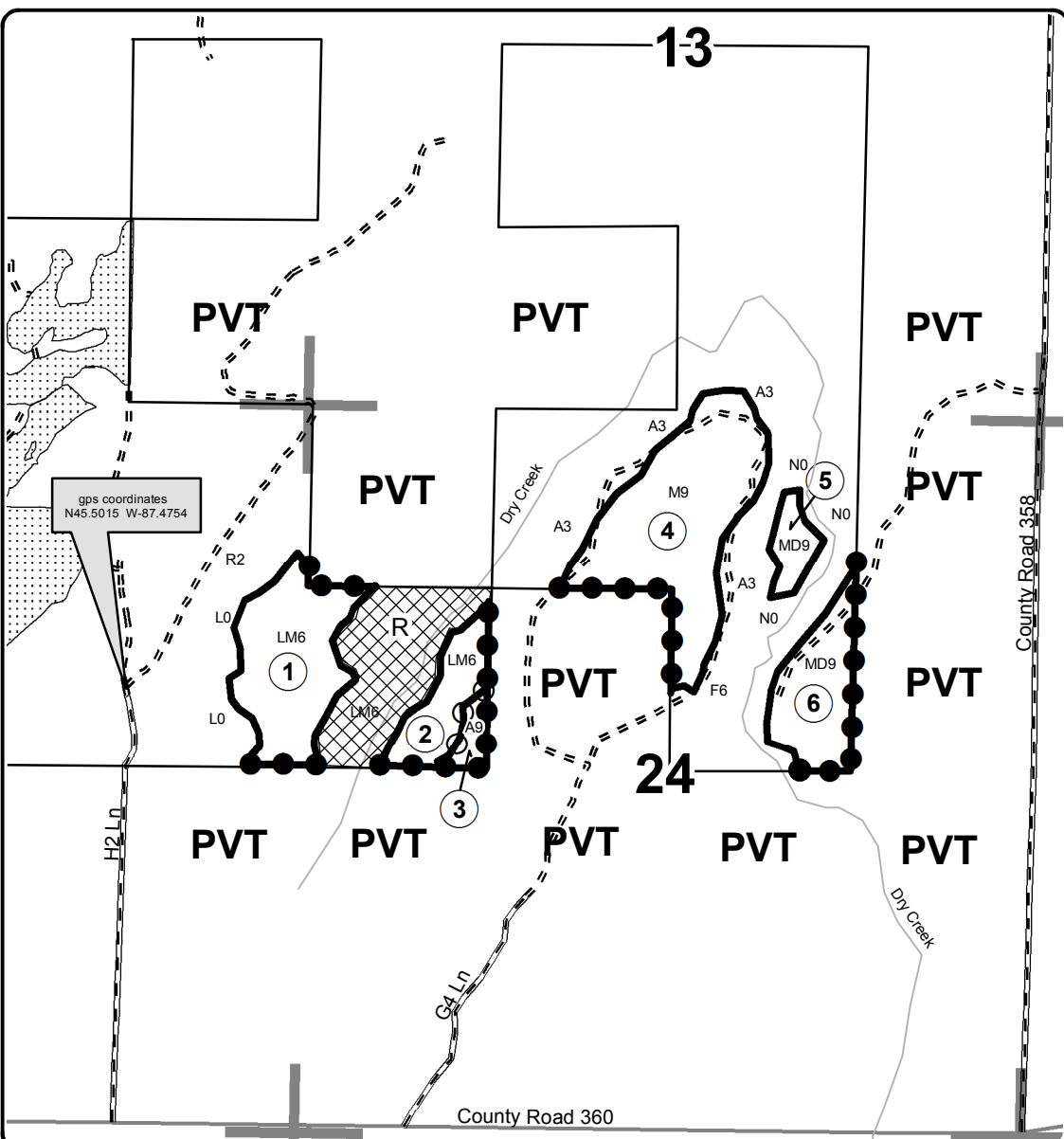
This information provided by authority of Part 525, 1994 PA 451, as amended.

Forest Management Unit Escanaba Management Unit		County Menominee County	Mapped By Beaudo	Date 5/23/2017	Page 1	of 1
Township 36N	Range 26W	Section(s) and Subdivision(s) Sec 13 - SWSE; Sec 23 - NENE & SENE; Sec 24 - SWNW, NENW, NWNE & SWNE.		Scale 1:15,840		

Cover Type				Density	
A = Aspen	H = Hemlock	N = Marsh	U = Upland Brush	0 = Non Stocked	5 = Pole Timber Medium
B = Paper Birch	J = Jack Pine	O = Oak	UM = Upland Mixed	1 = Seedling Sapling Poor	6 = Pole Timber Well
C = Cedar	L = Lowland Brush	P = Lowland Poplar	V = Bog or Marsh	2 = Seedling Sapling Medium	7 = Saw Timber Poor
D = Tread Bog	LM = Lowland Mixed	Q = Mixed Swamp Conifer	W = White Pine	3 = Seedling Sapling Well	8 = Saw Timber Medium
E = Swamp Hdwoods	M = Mpl, Bch, Brch	R = Red Pine	X = Non Stocked	4 = Pole Timber Poor	9 = Saw Timber Well
F = Spruce Fir	MC = Mixed Conifer	S = Black Spruce	Z = Water		
G = Grass	MD = Mixed Deciduous	T = Tamarack			

PU	Acres	PU	Acres
1	21.0	4	32.8
2	9.2	5	3.5
3	2.7	6	13.7

Dry Creek SBW
Compartment 108
82.9 Acres



Legend

- Against State (Red)
- Payment Unit (Yellow)
- Private Line (Blue)
- Section Corners
- 24 Section Number
- Stream
- Paved Roads
- ▬ Gravel Roads
- == Poor Dirt Roads
- ① Payment Unit
- PVT Private Property
- State Land Boundary
- ▣ Retention Area
- ▤ State Timber Sale

Locator Map
1:200,000

