



# TIMBER SALE MAP

This information provided by authority of Part 525, 1994 PA 451, as amended.

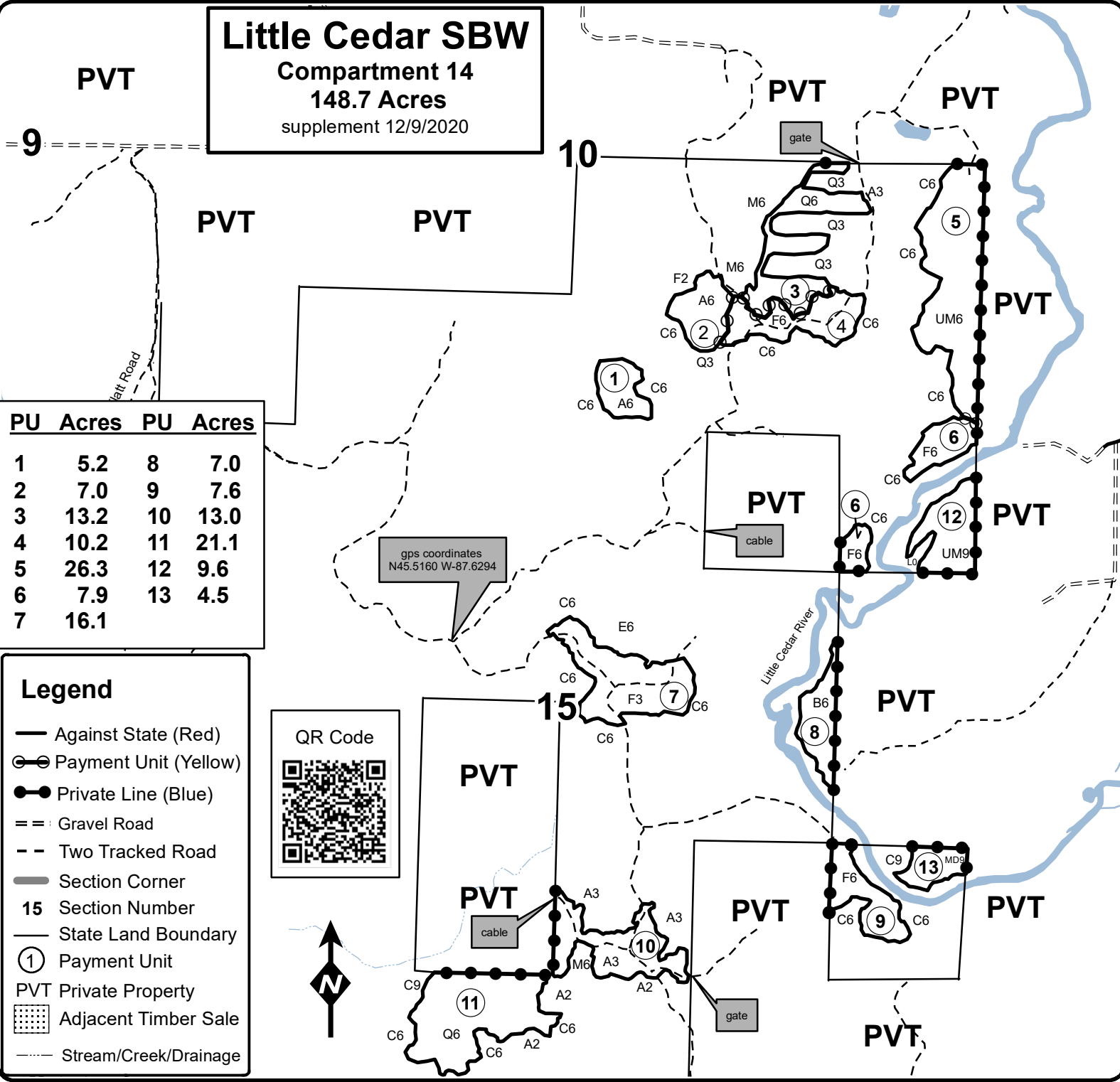
Forest Management Unit Escanaba Management Unit		County Menominee County	Mapped By Beaudo	Date updated 12/9/2020	Page 1	of 1
Township 36N	Range 27W	Section(s) and Subdivision(s) Sec 10 - NESE, NWSE, SESE, SWSE; Sec 11 - NWSW, SWSW; Sec 14 - NWNW, SWSW; Sec 15 - NESE, NWSE, SENE, SENW, SWNE, SWSE; Sec 22 - NENW, NWNE, NWNW.		Scale 1:15,840		

### Cover Type

A = Aspen	H = Hemlock	N = Marsh	U = Upland Brush
B = Paper Birch	J = Jack Pine	O = Oak	UM = Upland Mixed
C = Cedar	L = Lowland Brush	P = Lowland Poplar	V = Bog or Marsh
D = Treed Bog	LM = Lowland Mixed	Q = Mixed Swamp Conifer	W = White Pine
E = Swamp Hdwoods	M = Mpl, Bch, Brch	R = Red Pine	X = Non Stocked
F = Spruce Fir	MC = Mixed Conifer	S = Black Spruce	Z = Water
G = Grass	MD = Mixed Deciduous	T = Tamarack	

### Density

0 = Non Stocked	5 = Pole Timber Medium
1 = Seedling Sapling Poor	6 = Pole Timber Well
2 = Seedling Sapling Medium	7 = Saw Timber Poor
3 = Seedling Sapling Well	8 = Saw Timber Medium
4 = Pole Timber Poor	9 = Saw Timber Well



**Little Cedar SBW**  
**Compartment 14**  
**148.7 Acres**  
 supplement 12/9/2020

PU	Acres	PU	Acres
1	5.2	8	7.0
2	7.0	9	7.6
3	13.2	10	13.0
4	10.2	11	21.1
5	26.3	12	9.6
6	7.9	13	4.5
7	16.1		

gps coordinates  
 N45.5160 W-87.6294



**Legend**

- Against State (Red)
- ⊙ Payment Unit (Yellow)
- Private Line (Blue)
- == Gravel Road
- Two Tracked Road
- Section Corner
- 15 Section Number
- State Land Boundary
- ① Payment Unit
- PVT Private Property
- ▨ Adjacent Timber Sale
- Stream/Creek/Drainage

