



# TIMBER SALE MAP

This information provided by authority of Part 525, 1994 PA 451, as amended.

Forest Management Unit Escanaba Management Unit		County Menominee County	Mapped By Beaudo	Date 6/20/2018	Page 1	of 1
Township 35N	Range 28W	Section(s) and Subdivision(s) Sec 15 - NENE, NESE, NESW, NWNE, NWSE, NWSW, SENE, SENW, SESE, SWNE, SWNW, SWSE; Sec 22 - NENW, NWNE, NWNW, SWNW.		Scale 1:15,840		

### Cover Type

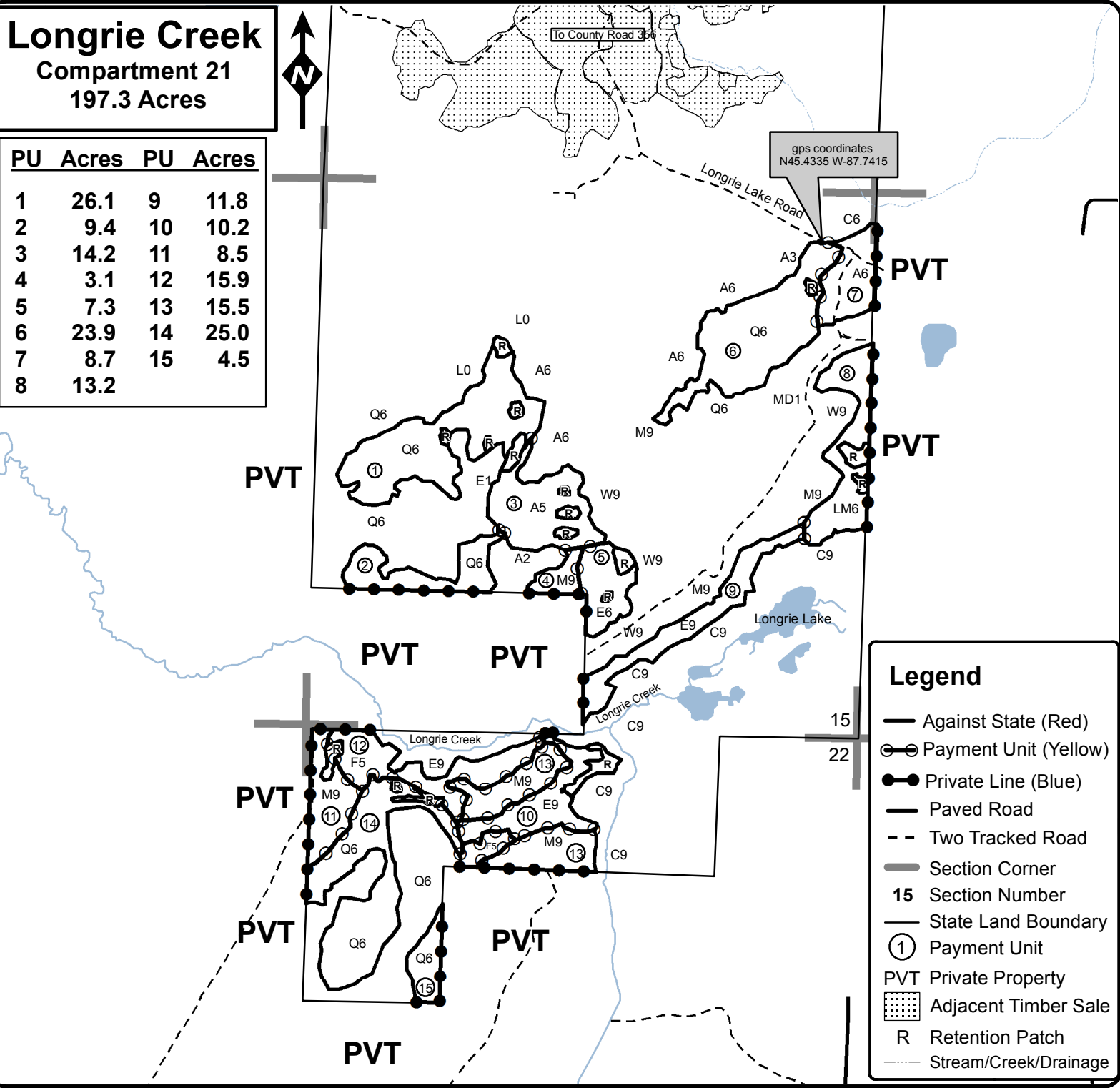
A = Aspen	H = Hemlock	N = Marsh	U = Upland Brush
B = Paper Birch	J = Jack Pine	O = Oak	UM = Upland Mixed
C = Cedar	L = Lowland Brush	P = Lowland Poplar	V = Bog or Marsh
D = Treed Bog	LM = Lowland Mixed	Q = Mixed Swamp Conifer	W = White Pine
E = Swamp Hdwoods	M = Mpl, Bch, Brch	R = Red Pine	X = Non Stocked
F = Spruce Fir	MC = Mixed Conifer	S = Black Spruce	Z = Water
G = Grass	MD = Mixed Deciduous	T = Tamarack	

### Density

0 = Non Stocked	5 = Pole Timber Medium
1 = Seedling Sapling Poor	6 = Pole Timber Well
2 = Seedling Sapling Medium	7 = Saw Timber Poor
3 = Seedling Sapling Well	8 = Saw Timber Medium
4 = Pole Timber Poor	9 = Saw Timber Well

**Longrie Creek**  
Compartment 21  
197.3 Acres

PU	Acres	PU	Acres
1	26.1	9	11.8
2	9.4	10	10.2
3	14.2	11	8.5
4	3.1	12	15.9
5	7.3	13	15.5
6	23.9	14	25.0
7	8.7	15	4.5
8	13.2		



### Legend

- Against State (Red)
- ⊙ Payment Unit (Yellow)
- Private Line (Blue)
- Paved Road
- - Two Tracked Road
- Section Corner
- 15 Section Number
- State Land Boundary
- ① Payment Unit
- PVT Private Property
- ⋯ Adjacent Timber Sale
- R Retention Patch
- Stream/Creek/Drainage

