



# TIMBER SALE MAP

This information provided by authority of Part 525, 1994 PA 451, as amended.

Forest Management Unit Escanaba Management Unit		County Menominee County	Mapped By Beudo	Date 7/16/2018	Page 1	of 1
Township 36N	Range 24W 25W	Section(s) and Subdivision(s) R24W: sec 19 - NWSW; R25W: sec 24 - NESE, SESE; sec 25 - NENE, NESE, NESW, NWSW, SESE, SESW, SWSE; sec 26 - NESE; sec 36 - NENW, NESE, NESW, NWNE, NWNW, NWSE, SENE, SENW, SWNE.		Scale 1:15,840		

### Cover Type

A = Aspen	H = Hemlock	N = Marsh	U = Upland Brush
B = Paper Birch	J = Jack Pine	O = Oak	UM = Upland Mixed
C = Cedar	L = Lowland Brush	P = Lowland Poplar	V = Bog or Marsh
D = Treed Bog	LM = Lowland Mixed	Q = Mixed Swamp Conifer	W = White Pine
E = Swamp Hdwoods	M = Mpl, Bch, Brch	R = Red Pine	X = Non Stocked
F = Spruce Fir	MC = Mixed Conifer	S = Black Spruce	Z = Water
G = Grass	MD = Mixed Deciduous	T = Tamarack	

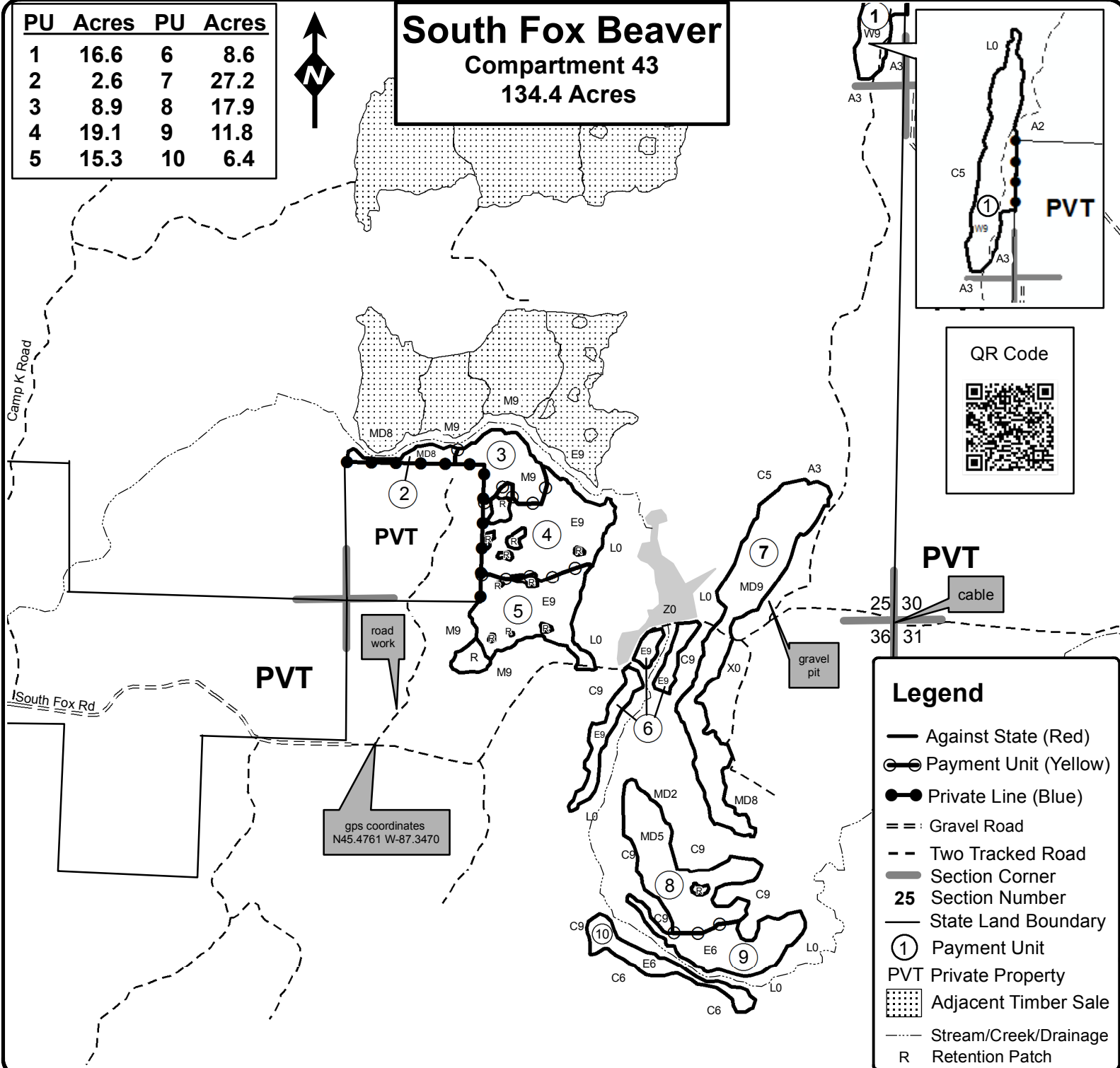
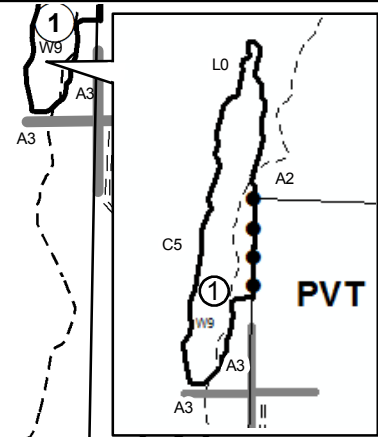
### Density

0 = Non Stocked	5 = Pole Timber Medium
1 = Seedling Sapling Poor	6 = Pole Timber Well
2 = Seedling Sapling Medium	7 = Saw Timber Poor
3 = Seedling Sapling Well	8 = Saw Timber Medium
4 = Pole Timber Poor	9 = Saw Timber Well

PU	Acres	PU	Acres
1	16.6	6	8.6
2	2.6	7	27.2
3	8.9	8	17.9
4	19.1	9	11.8
5	15.3	10	6.4



**South Fox Beaver**  
**Compartment 43**  
**134.4 Acres**



### Legend

- Against State (Red)
- Payment Unit (Yellow)
- Private Line (Blue)
- == Gravel Road
- Two Tracked Road
- Section Corner
- 25 Section Number
- State Land Boundary
- ① Payment Unit
- PVT Private Property
- ▨ Adjacent Timber Sale
- Stream/Creek/Drainage
- R Retention Patch

