

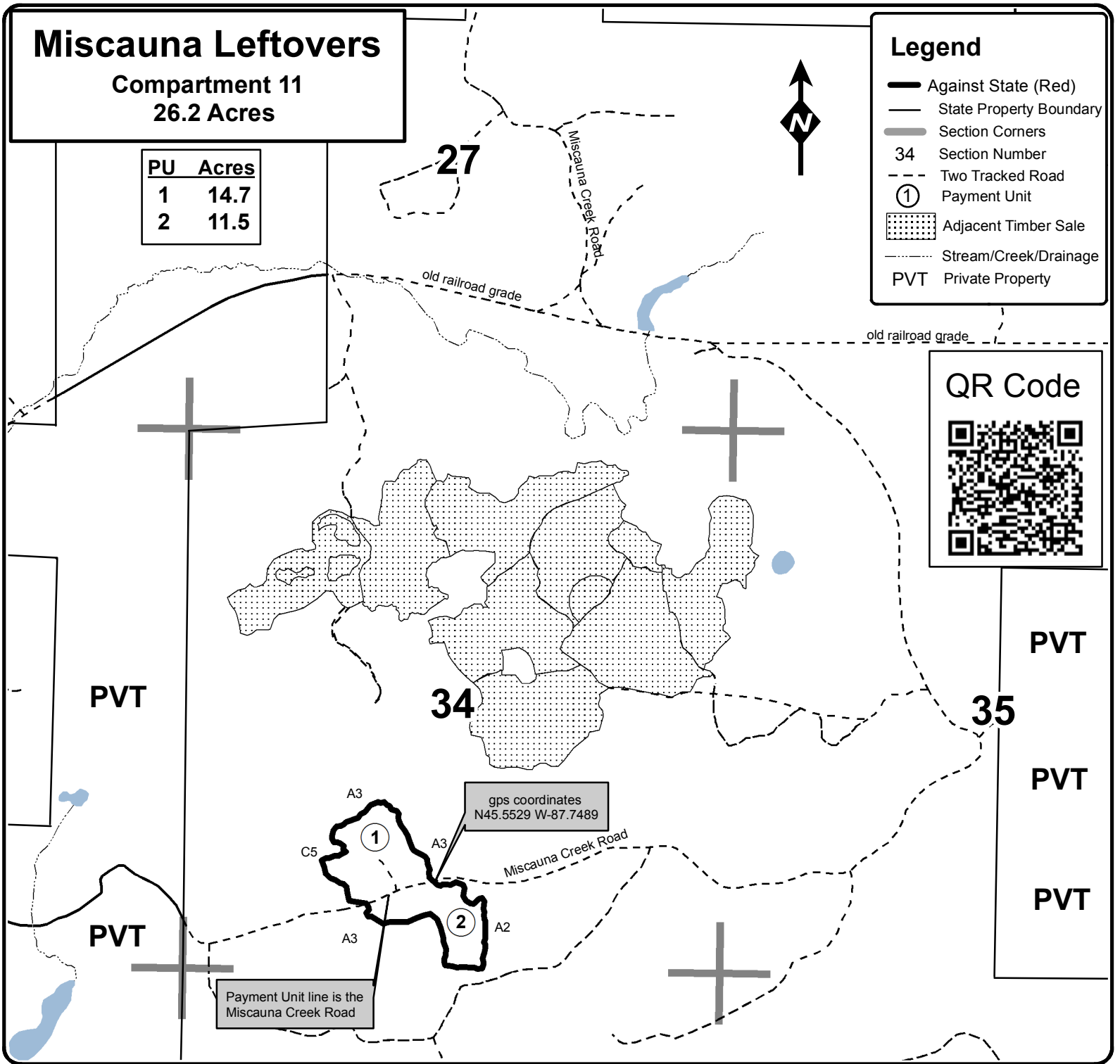


# TIMBER SALE MAP

This information provided by authority of Part 525, 1994 PA 451, as amended.

Forest Management Unit Escanaba Management Unit		County Menominee County	Mapped By Beaudo	Date 12/20/19	Page 1	of 1
Township 37N	Range 28W	Section(s) and Subdivision(s) Sec 34 - E1/2SW, SWSE		Scale 1:15,840		

Cover Type				Density	
A = Aspen	H = Hemlock	N = Marsh	U = Upland Brush	0 = Non Stocked	5 = Pole Timber Medium
B = Paper Birch	J = Jack Pine	O = Oak	UM = Upland Mixed	1 = Seedling Sapling Poor	6 = Pole Timber Well
C = Cedar	L = Lowland Brush	P = Lowland Poplar	V = Bog or Marsh	2 = Seedling Sapling Medium	7 = Saw Timber Poor
D = Treed Bog	LM = Lowland Mixed	Q = Mixed Swamp Conifer	W = White Pine	3 = Seedling Sapling Well	8 = Saw Timber Medium
E = Swamp Hdwoods	M = Mpl, Bch, Brch	R = Red Pine	X = Non Stocked	4 = Pole Timber Poor	9 = Saw Timber Well
F = Spruce Fir	MC = Mixed Conifer	S = Black Spruce	Z = Water		
G = Grass	MD = Mixed Deciduous	T = Tamarack			



## Miscauna Leftovers

Compartment 11  
26.2 Acres

PU	Acres
1	14.7
2	11.5

### Legend

- Against State (Red)
- State Property Boundary
- Section Corners
- 34** Section Number
- Two Tracked Road
- Payment Unit
- Adjacent Timber Sale
- Stream/Creek/Drainage
- PVT** Private Property

### QR Code



gps coordinates  
N45.5529 W-87.7489

Payment Unit line is the  
Miscauna Creek Road

