



TIMBER SALE MAP

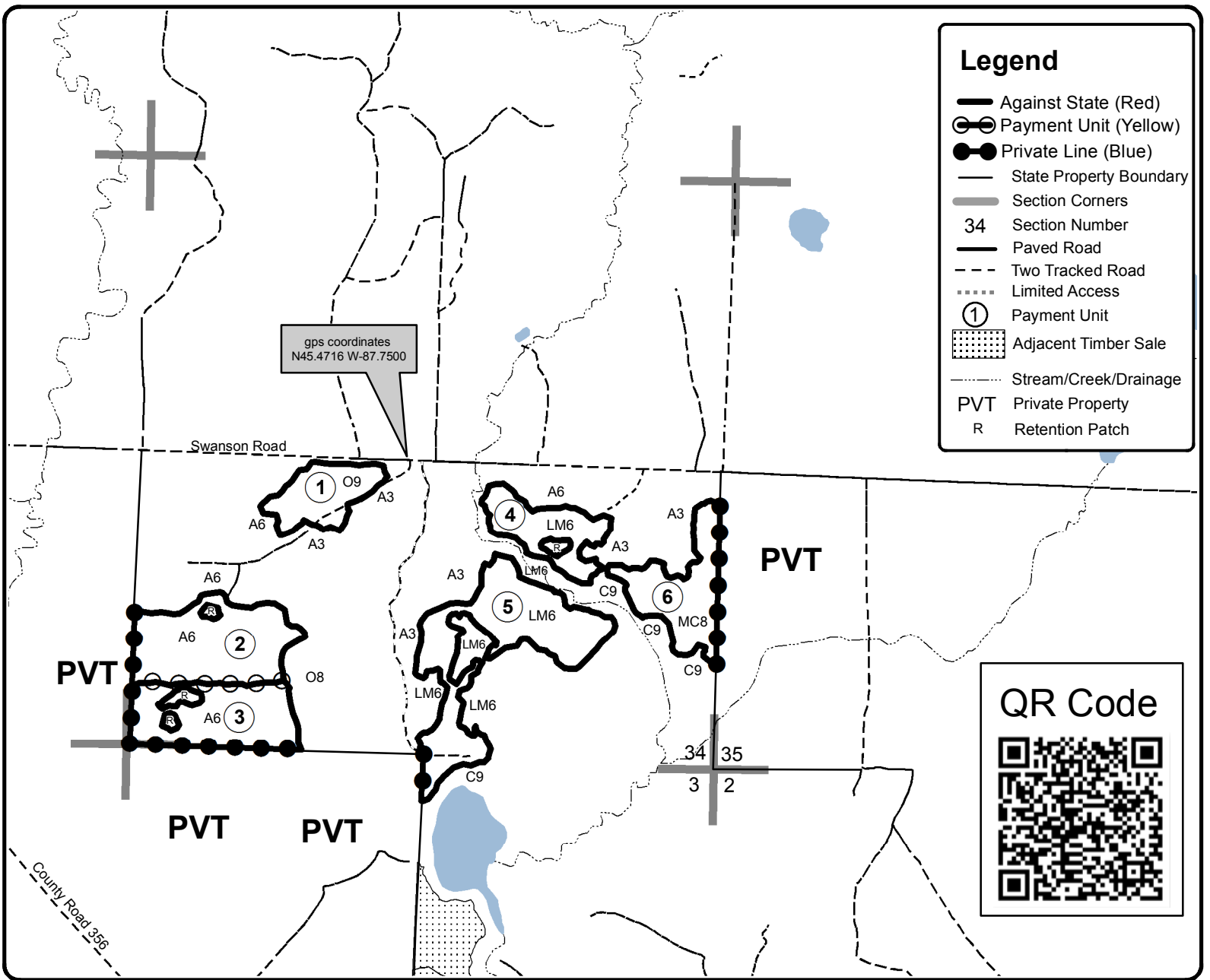
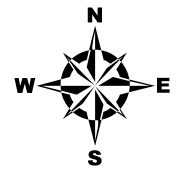
This information provided by authority of Part 525, 1994 PA 451, as amended.

Forest Management Unit Escanaba Management Unit		County Menominee County	Mapped By Beaudo	Date 12/27/2018	Page 1	of 1
Township 35N 36N	Range 28W	Section(s) and Subdivision(s) Sec 3 - NWNE Sec 34 - SW, SE	Cruised By Salter, Beaudo	Scale 1:15,840		

Cover Type				Density	
A = Aspen	H = Hemlock	N = Marsh	U = Upland Brush	0 = Non Stocked	5 = Pole Timber Medium
B = Paper Birch	J = Jack Pine	O = Oak	UM = Upland Mixed	1 = Seedling Sapling Poor	6 = Pole Timber Well
C = Cedar	L = Lowland Brush	P = Lowland Poplar	V = Bog or Marsh	2 = Seedling Sapling Medium	7 = Saw Timber Poor
D = Treed Bog	LM = Lowland Mixed	Q = Mixed Swamp Conifer	W = White Pine	3 = Seedling Sapling Well	8 = Saw Timber Medium
E = Swamp Hdwoods	M = Mpl, Bch, Brch	R = Red Pine	X = Non Stocked	4 = Pole Timber Poor	9 = Saw Timber Well
F = Spruce Fir	MC = Mixed Conifer	S = Black Spruce	Z = Water		
G = Grass	MD = Mixed Deciduous	T = Tamarack			

PU	Acres	PU	Acres
1	9.9	4	11.0
2	22.6	5	28.6
3	18.5	6	15.5

Swanson South
Compartment 18
106.1 Acres



Legend

- Against State (Red)
- Payment Unit (Yellow)
- Private Line (Blue)
- State Property Boundary
- Section Corners
- 34 Section Number
- Paved Road
- - - Two Tracked Road
- ⋯ Limited Access
- ① Payment Unit
- ▨ Adjacent Timber Sale
- ⋯ Stream/Creek/Drainage
- PVT Private Property
- R Retention Patch

