



TIMBER SALE MAP

This information provided by authority of Part 525, 1994 PA 451, as amended.

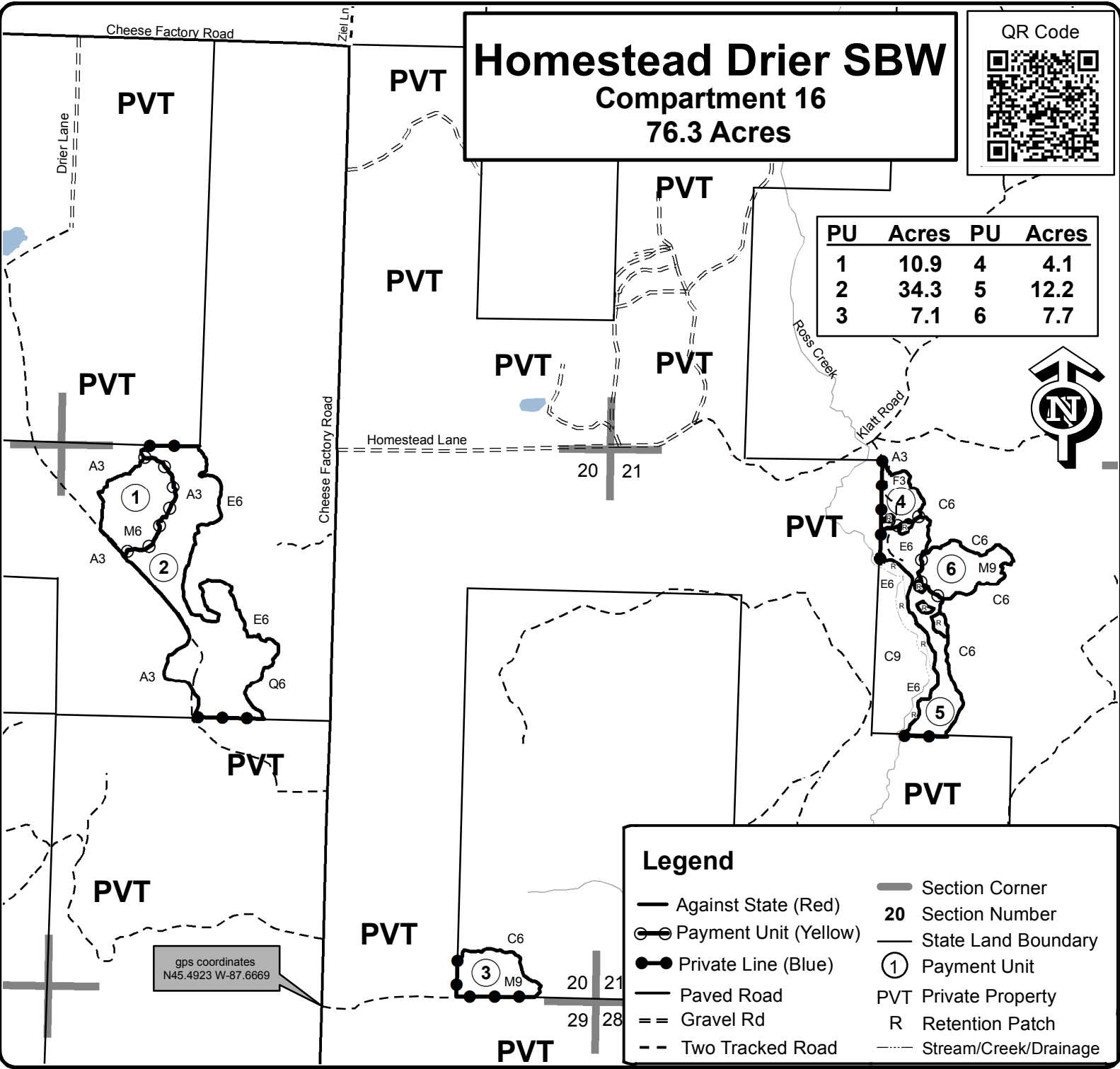
Forest Management Unit Escanaba Management Unit		County Menominee County	Mapped By Beaudo	Date 8/8/2019	Page of
			Cruised By Salter, Beaudo	Revised 9/27/19	1 1
Township 36N	Range 27W	Section(s) and Subdivision(s) Sec 20 - NW, SESE; Sec 21 - W1/2NE.		Scale 1:15,840	

Cover Type

A = Aspen	H = Hemlock	N = Marsh	U = Upland Brush
B = Paper Birch	J = Jack Pine	O = Oak	UM = Upland Mixed
C = Cedar	L = Lowland Brush	P = Lowland Poplar	V = Bog or Marsh
D = Treed Bog	LM = Lowland Mixed	Q = Mixed Swamp Conifer	W = White Pine
E = Swamp Hdwoods	M = Mpl, Bch, Brch	R = Red Pine	X = Non Stocked
F = Spruce Fir	MC = Mixed Conifer	S = Black Spruce	Z = Water
G = Grass	MD = Mixed Deciduous	T = Tamarack	

Density

0 = Non Stocked	5 = Pole Timber Medium
1 = Seedling Sapling Poor	6 = Pole Timber Well
2 = Seedling Sapling Medium	7 = Saw Timber Poor
3 = Seedling Sapling Well	8 = Saw Timber Medium
4 = Pole Timber Poor	9 = Saw Timber Well



Legend

Against State (Red)	Section Corner
Payment Unit (Yellow)	20 Section Number
Private Line (Blue)	State Land Boundary
Paved Road	① Payment Unit
Gravel Rd	PVT Private Property
Two Tracked Road	R Retention Patch
	Stream/Creek/Drainage

