



TIMBER SALE MAP

This information provided by authority of Part 525, 1994 PA 451, as amended.

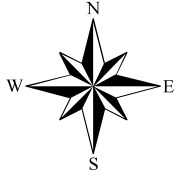
| | | | | | | |
|--|---------------------|--|---------------------|--------------------|-----------|---------|
| Forest Management Unit Escanaba Management Unit | | County Menominee County | Mapped By Beaudo | Date 10/16/2019 | Page 1 | of 1 |
| Township 35N | Range 28W 29W | Section(s) and Subdivision(s) 28W: Sec 30 - E1/2SW, NWSE; Sec 31 - NENW. 29W: Sec 36 - SENW, NWNE, S1/2NE, NWSW. | | Scale 1:15,840 | | |

Cover Type

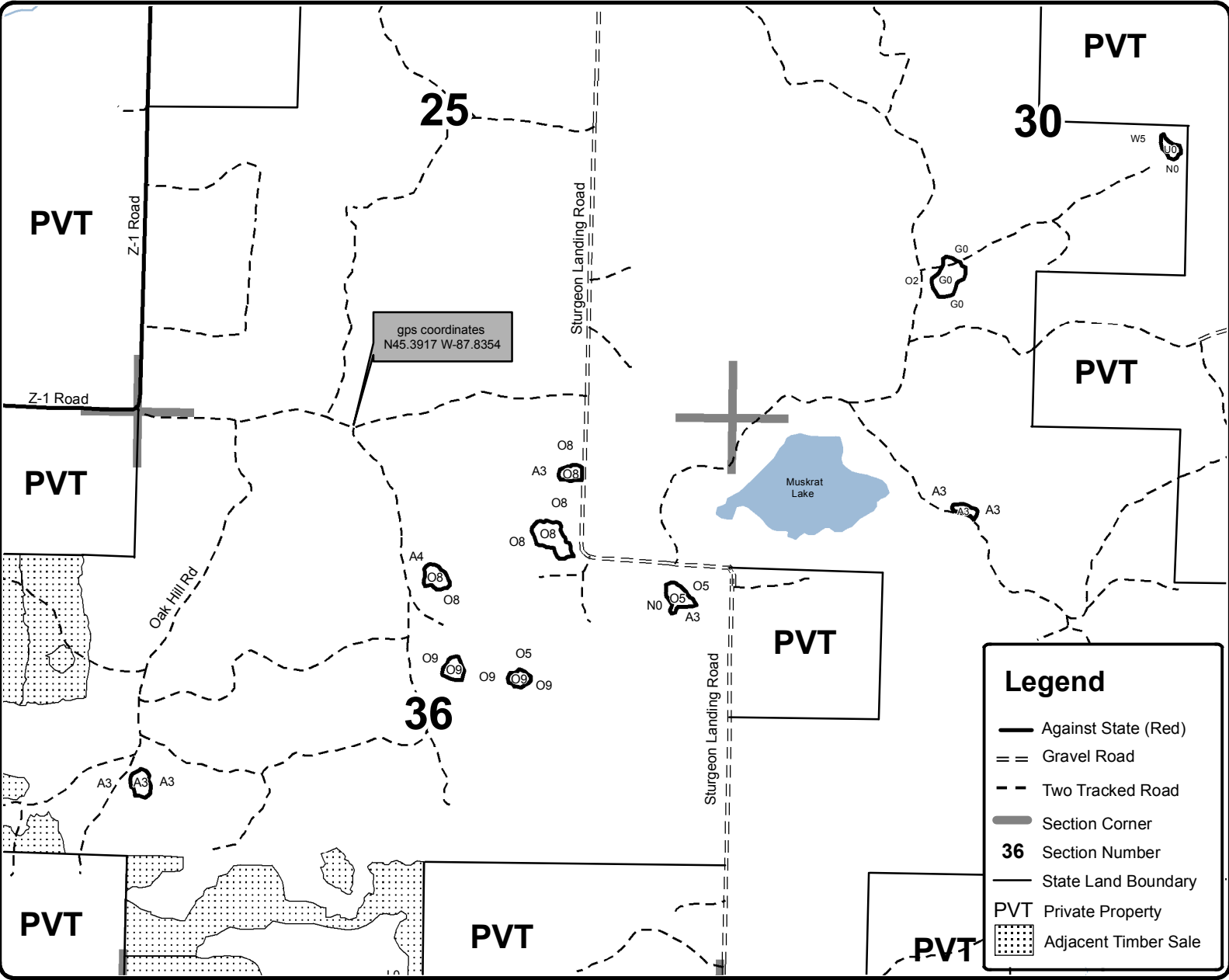
| | | | |
|-------------------|----------------------|-------------------------|-------------------|
| A = Aspen | H = Hemlock | N = Marsh | U = Upland Brush |
| B = Paper Birch | J = Jack Pine | O = Oak | UM = Upland Mixed |
| C = Cedar | L = Lowland Brush | P = Lowland Poplar | V = Bog or Marsh |
| D = Treed Bog | LM = Lowland Mixed | Q = Mixed Swamp Conifer | W = White Pine |
| E = Swamp Hdwoods | M = Mpl, Bch, Brch | R = Red Pine | X = Non Stocked |
| F = Spruce Fir | MC = Mixed Conifer | S = Black Spruce | Z = Water |
| G = Grass | MD = Mixed Deciduous | T = Tamarack | |

Density

| | |
|-----------------------------|------------------------|
| 0 = Non Stocked | 5 = Pole Timber Medium |
| 1 = Seedling Sapling Poor | 6 = Pole Timber Well |
| 2 = Seedling Sapling Medium | 7 = Saw Timber Poor |
| 3 = Seedling Sapling Well | 8 = Saw Timber Medium |
| 4 = Pole Timber Poor | 9 = Saw Timber Well |



109 Oak Wilt
Compartment 109
8.3 Acres



gps coordinates
N45.3917 W-87.8354

| Legend | |
|-----------|----------------------|
| | Against State (Red) |
| | Gravel Road |
| | Two Tracked Road |
| | Section Corner |
| 36 | Section Number |
| | State Land Boundary |
| PVT | Private Property |
| | Adjacent Timber Sale |

