



TIMBER SALE MAP

This information provided by authority of Part 525, 1994 PA 451, as amended.

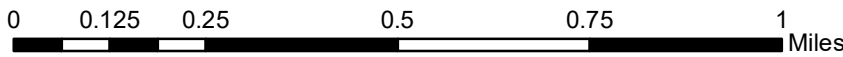
Forest Management Unit Escanaba Management Unit		County Menominee County	Mapped By Beaudo	Date 9/29/2020	Page 1	of 1
Township 36N	Range 25W	Section(s) and Subdivision(s) Sec 25 - NWNW; Sec 26 - E1/2NE, N1/2SE, SWSE; Sec 34 - E1/2NE, E1/2SE; Sec 35 - S1/2NW, NWSW, S1/2SW, SE.		Scale 1:15,840		

Cover Type

A = Aspen	H = Hemlock	N = Marsh	U = Upland Brush
B = Paper Birch	J = Jack Pine	O = Oak	UM = Upland Mixed
C = Cedar	L = Lowland Brush	P = Lowland Poplar	V = Bog or Marsh
D = Treed Bog	LM = Lowland Mixed	Q = Mixed Swamp Conifer	W = White Pine
E = Swamp Hdwoods	M = Mpl, Bch, Brch	R = Red Pine	X = Non Stocked
F = Spruce Fir	MC = Mixed Conifer	S = Black Spruce	Z = Water
G = Grass	MD = Mixed Deciduous	T = Tamarack	

Density

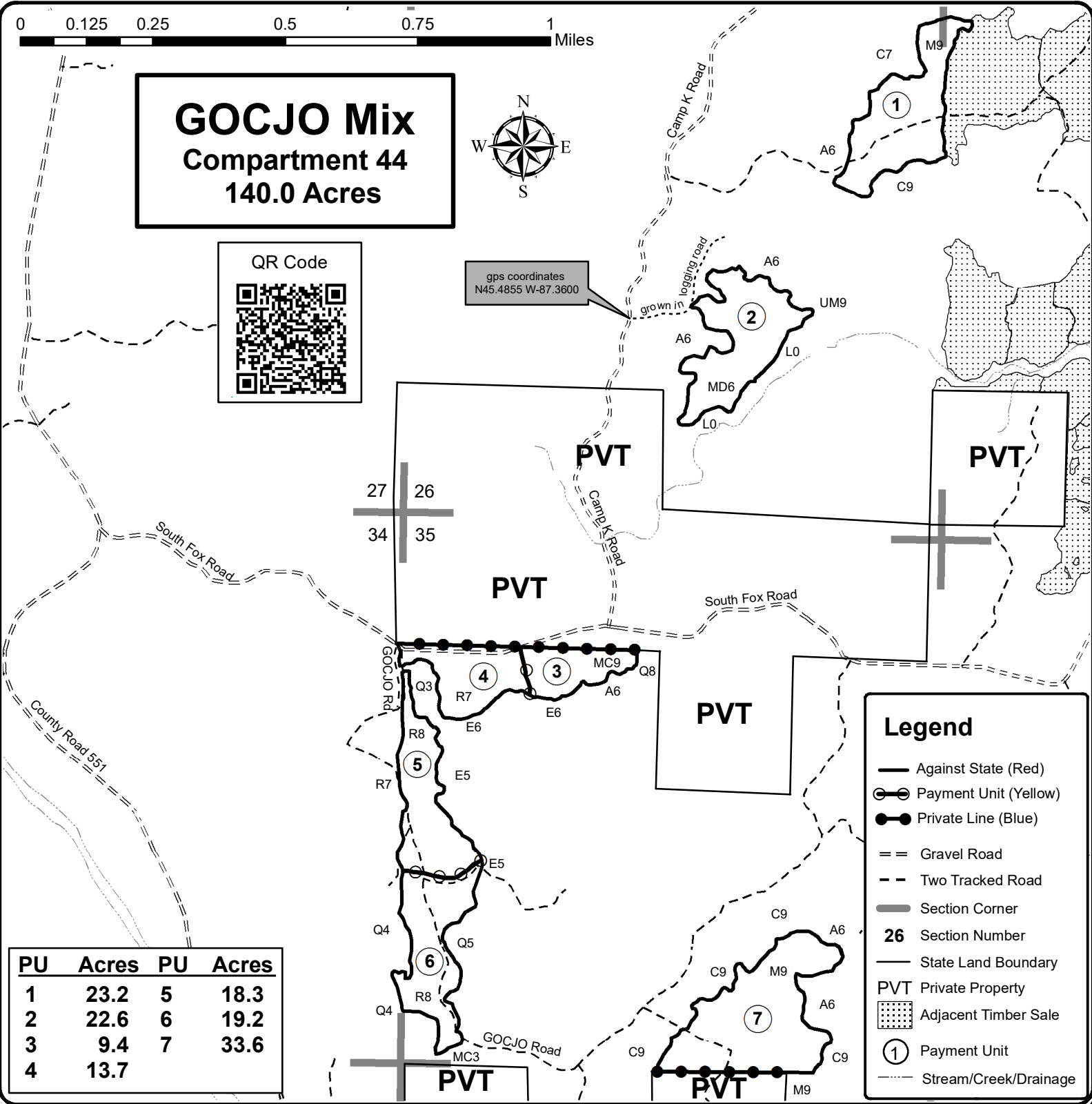
0 = Non Stocked	5 = Pole Timber Medium
1 = Seedling Sapling Poor	6 = Pole Timber Well
2 = Seedling Sapling Medium	7 = Saw Timber Poor
3 = Seedling Sapling Well	8 = Saw Timber Medium
4 = Pole Timber Poor	9 = Saw Timber Well



GOCJO Mix
Compartment 44
140.0 Acres



gps coordinates
N45.4855 W-87.3600



PU	Acres	PU	Acres
1	23.2	5	18.3
2	22.6	6	19.2
3	9.4	7	33.6
4	13.7		

Legend

- Against State (Red)
- Payment Unit (Yellow)
- Private Line (Blue)
- Gravel Road
- Two Tracked Road
- Section Corner
- 26** Section Number
- State Land Boundary
- PVT Private Property
- Adjacent Timber Sale
- Payment Unit
- Stream/Creek/Drainage