



TIMBER SALE MAP

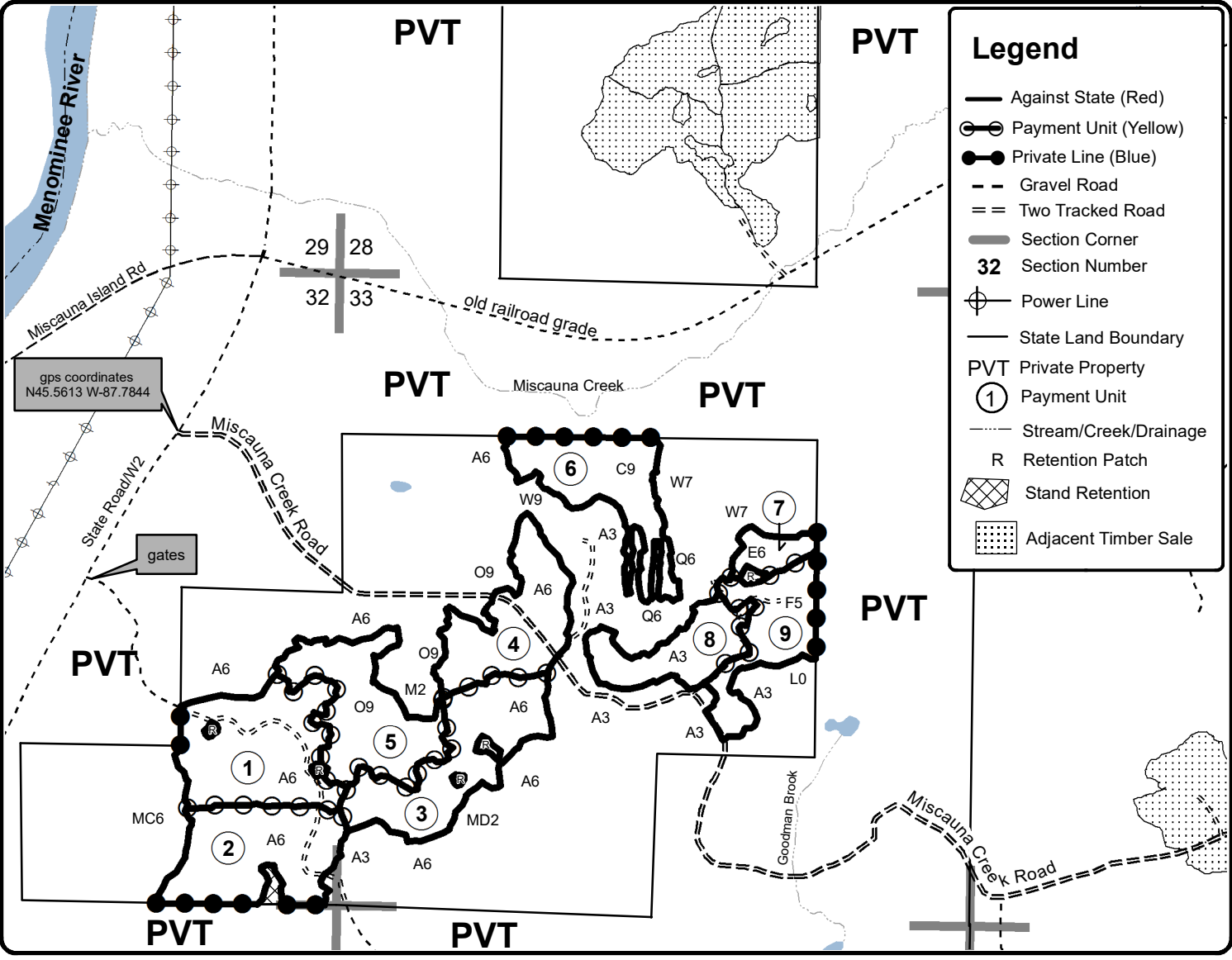
This information provided by authority of Part 525, 1994 PA 451, as amended.

Forest Management Unit		County	Mapped By	Date	Page of	
Escanaba Management Unit		Menominee County	Beudo	5/4/2021	1	1
Township	Range	Section(s) and Subdivision(s)		Scale		
37N	28W	Sec 32 - NESE, S1/2SE; Sec 33 - SENW, SWNE, SW, NWSE.		1:15,840		

Cover Type				Density	
A = Aspen	H = Hemlock	N = Marsh	U = Upland Brush	0 = Non Stocked	5 = Pole Timber Medium
B = Paper Birch	J = Jack Pine	O = Oak	UM = Upland Mixed	1 = Seedling Sapling Poor	6 = Pole Timber Well
C = Cedar	L = Lowland Brush	P = Lowland Poplar	V = Bog or Marsh	2 = Seedling Sapling Medium	7 = Saw Timber Poor
D = Tread Bog	LM = Lowland Mixed	Q = Mixed Swamp Conifer	W = White Pine	3 = Seedling Sapling Well	8 = Saw Timber Medium
E = Swamp Hdwoods	M = Mpl, Bch, Brch	R = Red Pine	X = Non Stocked	4 = Pole Timber Poor	9 = Saw Timber Well
F = Spruce Fir	MC = Mixed Conifer	S = Black Spruce	Z = Water		
G = Grass	MD = Mixed Deciduous	T = Tamarack			

PU	Acres	PU	Acres
1	26.8	6	18.8
2	23.4	7	4.2
3	23.8	8	12.8
4	19.8	9	14.9
5	22.0		

Learning Curve Mix
 Compartment 12
 166.5 Acres



Legend

- Against State (Red)
- Payment Unit (Yellow)
- Private Line (Blue)
- Gravel Road
- Two Tracked Road
- Section Corner
- 32** Section Number
- Power Line
- State Land Boundary
- PVT Private Property
- Payment Unit
- Stream/Creek/Drainage
- Retention Patch
- Stand Retention
- Adjacent Timber Sale

