



TIMBER SALE MAP

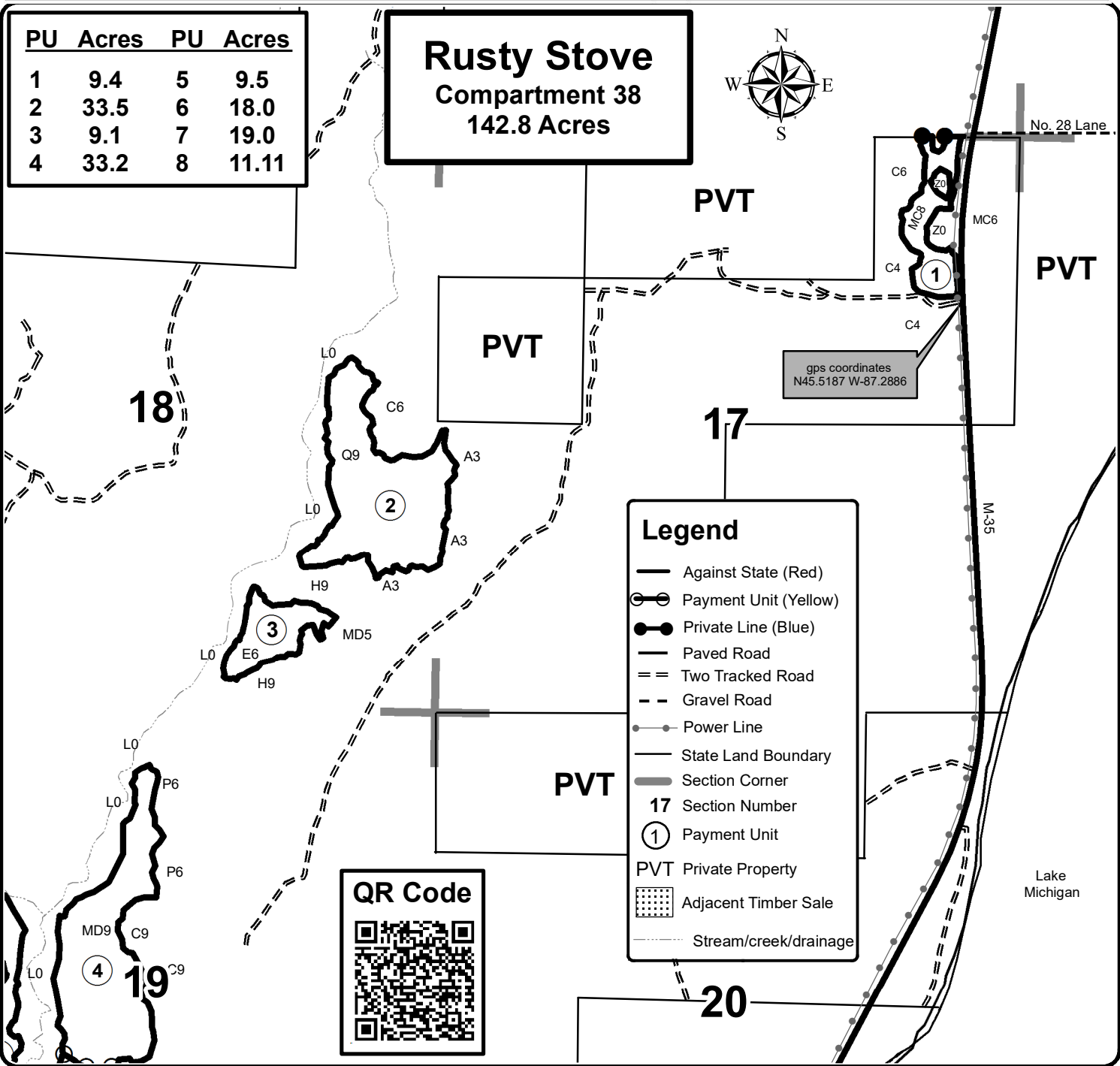
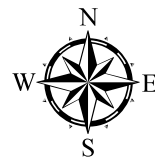
This information provided by authority of Part 525, 1994 PA 451, as amended.

Forest Management Unit Escanaba Management Unit		County Menominee County	Mapped By Beaudou	Date 9/11/2022	Page 1	of 2
Township 36N	Range 24W	Section(s) and Subdivision(s) Sec 17 - E1/2NE, NWSW; Sec 18 - SENE, NESE, S1/2SE; Sec 19 - W1/2SE, NENW, S1/2NW, W1/2NE, N1/2SW; Sec 30 - NWNE.		Scale 1:15,840		

Cover Type				Density	
A = Aspen	H = Hemlock	N = Marsh	U = Upland Brush	0 = Non Stocked	5 = Pole Timber Medium
B = Paper Birch	J = Jack Pine	O = Oak	UM = Upland Mixed	1 = Seedling Sapling Poor	6 = Pole Timber Well
C = Cedar	L = Lowland Brush	P = Lowland Poplar	V = Bog or Marsh	2 = Seedling Sapling Medium	7 = Saw Timber Poor
D = Treed Bog	LM = Lowland Mixed	Q = Mixed Swamp Conifer	W = White Pine	3 = Seedling Sapling Well	8 = Saw Timber Medium
E = Swamp Hdwoods	M = Mpl, Bch, Brch	R = Red Pine	X = Non Stocked	4 = Pole Timber Poor	9 = Saw Timber Well
F = Spruce Fir	MC = Mixed Conifer	S = Black Spruce	Z = Water		
G = Grass	MD = Mixed Deciduous	T = Tamarack			

PU	Acres	PU	Acres
1	9.4	5	9.5
2	33.5	6	18.0
3	9.1	7	19.0
4	33.2	8	11.11

Rusty Stove
Compartment 38
142.8 Acres



gps coordinates
 N45.5187 W-87.2886

Legend

- Against State (Red)
- ⊙ Payment Unit (Yellow)
- Private Line (Blue)
- Paved Road
- == Two Tracked Road
- - Gravel Road
- Power Line
- State Land Boundary
- Section Corner
- 17 Section Number
- ⊙ Payment Unit
- PVT Private Property
- ▨ Adjacent Timber Sale
- Stream/creek/drainage

