



TIMBER SALE MAP

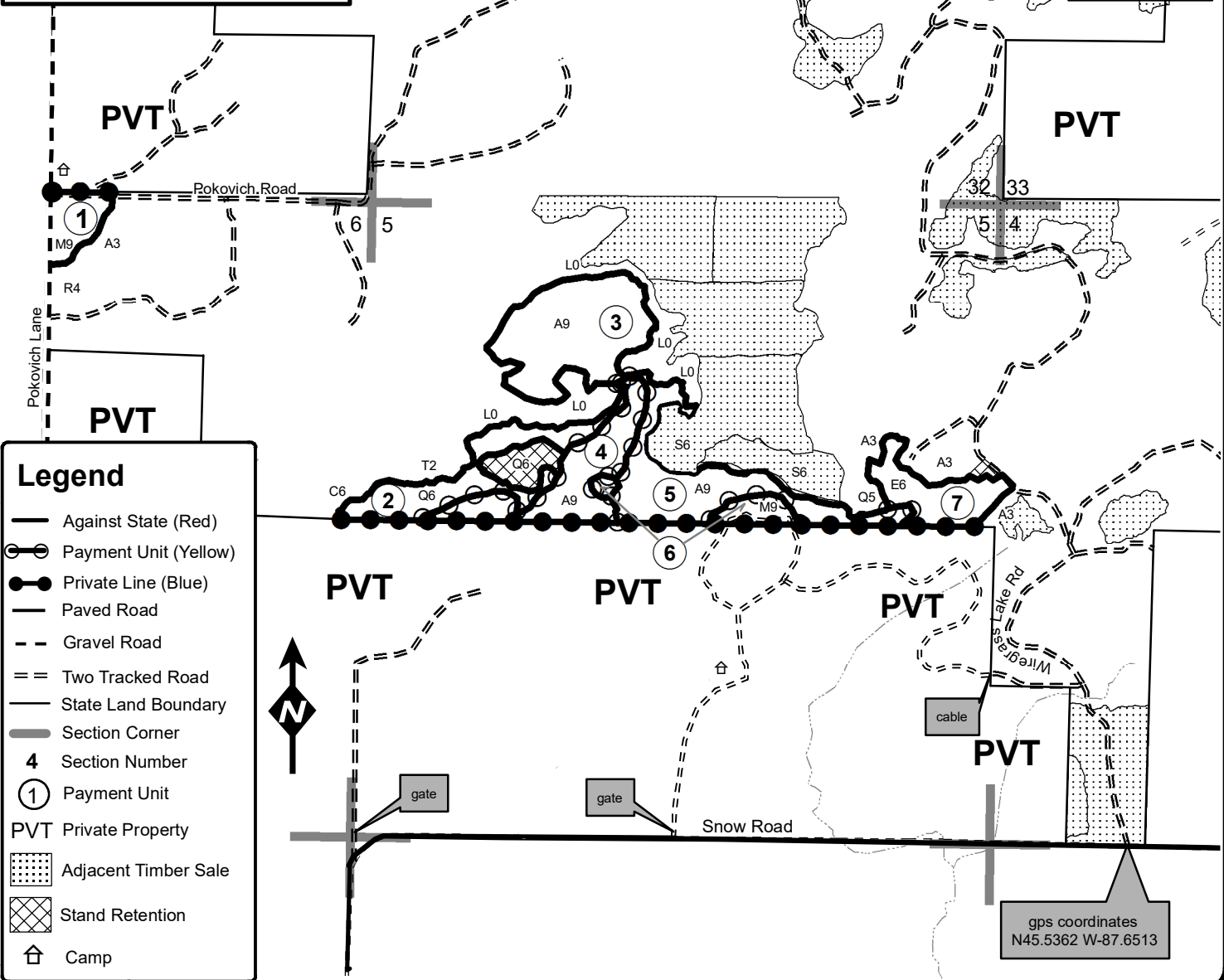
This information provided by authority of Part 525, 1994 PA 451, as amended.

Forest Management Unit		County	Mapped By	Date	Page	
Escanaba Management Unit		Menominee County	Beudo	6/9/2023	1	1
Township	Range	Section(s) and Subdivision(s)			Scale	
36N	27W	Sec 4 - SWNW; Sec 5 - NW, S1/2NE; Sec 6 - NWNE, SENE.			1:15,840	

Cover Type				Density	
A = Aspen	H = Hemlock	N = Marsh	U = Upland Brush	0 = Non Stocked	5 = Pole Timber Medium
B = Paper Birch	J = Jack Pine	O = Oak	UM = Upland Mixed	1 = Seedling Sapling Poor	6 = Pole Timber Well
C = Cedar	L = Lowland Brush	P = Lowland Poplar	V = Bog or Marsh	2 = Seedling Sapling Medium	7 = Saw Timber Poor
D = Treed Bog	LM = Lowland Mixed	Q = Mixed Swamp Conifer	W = White Pine	3 = Seedling Sapling Well	8 = Saw Timber Medium
E = Swamp Hdwoods	M = Mpl, Bch, Brch	R = Red Pine	X = Non Stocked	4 = Pole Timber Poor	9 = Saw Timber Well
F = Spruce Fir	MC = Mixed Conifer	S = Black Spruce	Z = Water		
G = Grass	MD = Mixed Deciduous	T = Tamarack			

PU	Acres	PU	Acres
1	5.1	5	18.6
2	13.2	6	4.0
3	22.1	7	10.0
4	14.9		

Long Walk Aspen
Compartment 13
87.9 Acres



Legend

- Against State (Red)
- Payment Unit (Yellow)
- Private Line (Blue)
- Paved Road
- - Gravel Road
- = = Two Tracked Road
- State Land Boundary
- Section Corner
- 4 Section Number
- ① Payment Unit
- PVT Private Property
- ▤ Adjacent Timber Sale
- ▨ Stand Retention
- ⛖ Camp

