



TIMBER SALE MAP

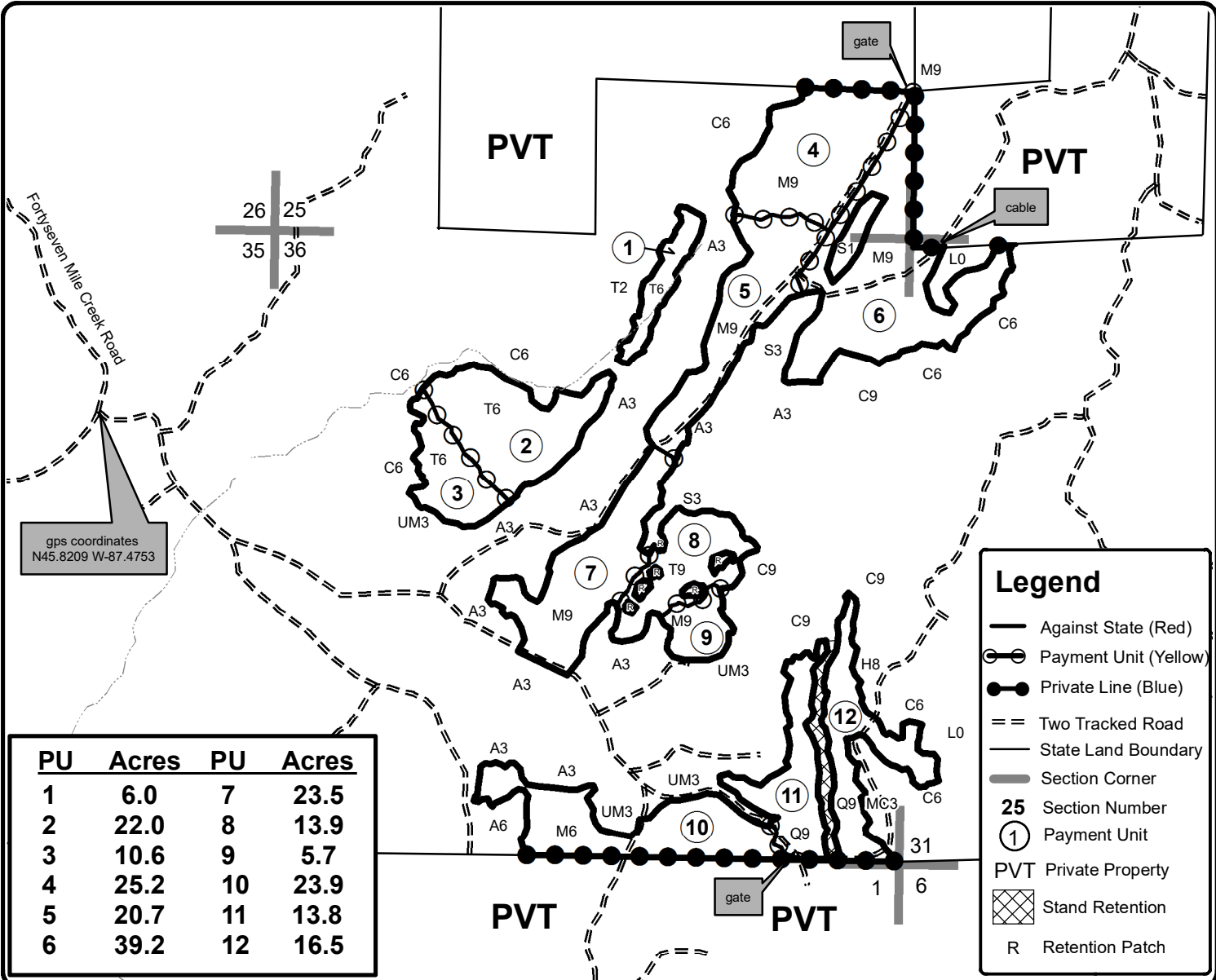
This information provided by authority of Part 525, 1994 PA 451, as amended.

Forest Management Unit		County		Mapped By		Date		Page of	
Escanaba Management Unit		Menominee County		Beudo		11/28/2023		1 of 1	
Township		Range		Section(s) and Subdivision(s)		Scale			
40N		25W 26W		R25W Sec 31 - NWNW, SWSW R26W Sec 25 - S1/2SE; Sec 36 - NW, NE, E1/2SW, SE.		1:15,840			

Cover Type				Density			
A = Aspen	H = Hemlock	N = Marsh	U = Upland Brush	0 = Non Stocked	5 = Pole Timber Medium		
B = Paper Birch	J = Jack Pine	O = Oak	UM = Upland Mixed	1 = Seedling Sapling Poor	6 = Pole Timber Well		
C = Cedar	L = Lowland Brush	P = Lowland Poplar	V = Bog or Marsh	2 = Seedling Sapling Medium	7 = Saw Timber Poor		
D = Treed Bog	LM = Lowland Mixed	Q = Mixed Swamp Conifer	W = White Pine	3 = Seedling Sapling Well	8 = Saw Timber Medium		
E = Swamp Hdwoods	M = Mpl, Bch, Brch	R = Red Pine	X = Non Stocked	4 = Pole Timber Poor	9 = Saw Timber Well		
F = Spruce Fir	MC = Mixed Conifer	S = Black Spruce	Z = Water				
G = Grass	MD = Mixed Deciduous	T = Tamarack					



Fortyseven Hardwood Compartment 70 221.0 Acres



gps coordinates
N45.8209 W-87.4753

PU	Acres	PU	Acres
1	6.0	7	23.5
2	22.0	8	13.9
3	10.6	9	5.7
4	25.2	10	23.9
5	20.7	11	13.8
6	39.2	12	16.5

Legend

- Against State (Red)
- Payment Unit (Yellow)
- Private Line (Blue)
- Two Tracked Road
- State Land Boundary
- Section Corner
- 25** Section Number
- 1** Payment Unit
- PVT** Private Property
- Stand Retention
- R** Retention Patch

