



# TIMBER SALE MAP

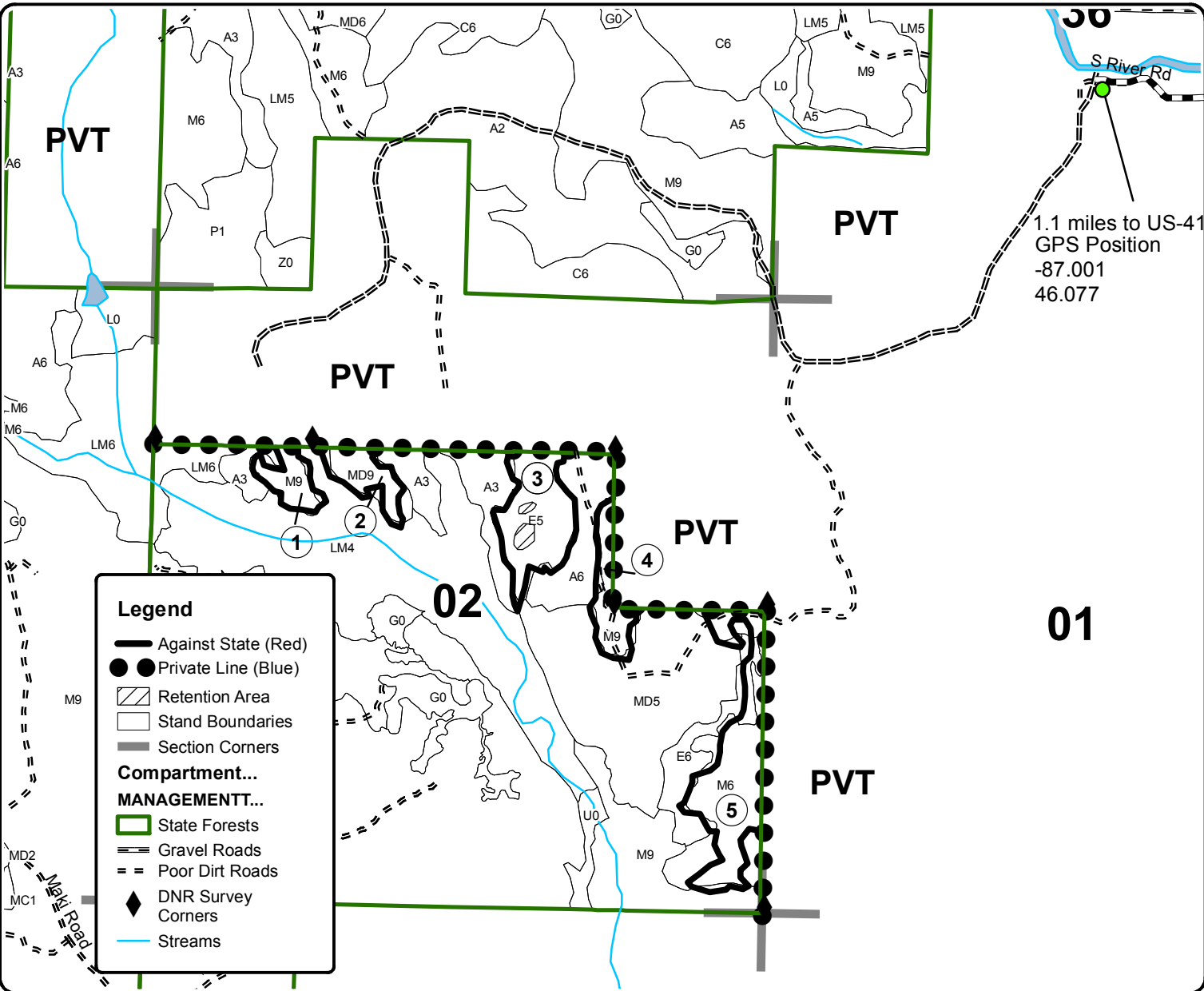
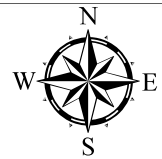
This information provided by authority of Part 525, 1994 PA 451, as amended.

Forest Management Unit Escanaba		County Delta	Mapped By Racine	Date 7/24/2017	Page 1	of 1
Township 42N	Range 22W	Section(s) and Subdivision(s) SWNE, SENW, SWNW, NESE, NWSE, SESE		Scale 1:15,852		

Cover Type				Density	
A = Aspen	H = Hemlock	N = Marsh	U = Upland Brush	0 = Non Stocked	5 = Pole Timber Medium
B = Paper Birch	J = Jack Pine	O = Oak	UM = Upland Mixed	1 = Seedling Sapling Poor	6 = Pole Timber Well
C = Cedar	L = Lowland Brush	P = Lowland Poplar	V = Bog or Marsh	2 = Seedling Sapling Medium	7 = Saw Timber Poor
D = Tread Bog	LM = Lowland Mixed	Q = Mixed Swamp Conifer	W = White Pine	3 = Seedling Sapling Well	8 = Saw Timber Medium
E = Swamp Hdwoods	M = Mpl, Bch, Brch	R = Red Pine	X = Non Stocked	4 = Pole Timber Poor	9 = Saw Timber Well
F = Spruce Fir	MC = Mixed Conifer	S = Black Spruce	Z = Water		
G = Grass	MD = Mixed Deciduous	T = Tamarack			

PU	Acres	PU	Acres
1	4.2	4	5.8
2	5	5	18.1
3	11.9		

**Patches**  
**Compartment 102**  
**45 Acres**



1.1 miles to US-41  
 GPS Position  
 -87.001  
 46.077

**Legend**

- Against State (Red)
- Private Line (Blue)
- ▨ Retention Area
- Stand Boundaries
- Section Corners

**Compartment...**

**MANAGEMENTT...**

- ▭ State Forests
- ▬ Gravel Roads
- ▬ Poor Dirt Roads
- ◆ DNR Survey Corners
- Streams

