

Date: 04/05/2012

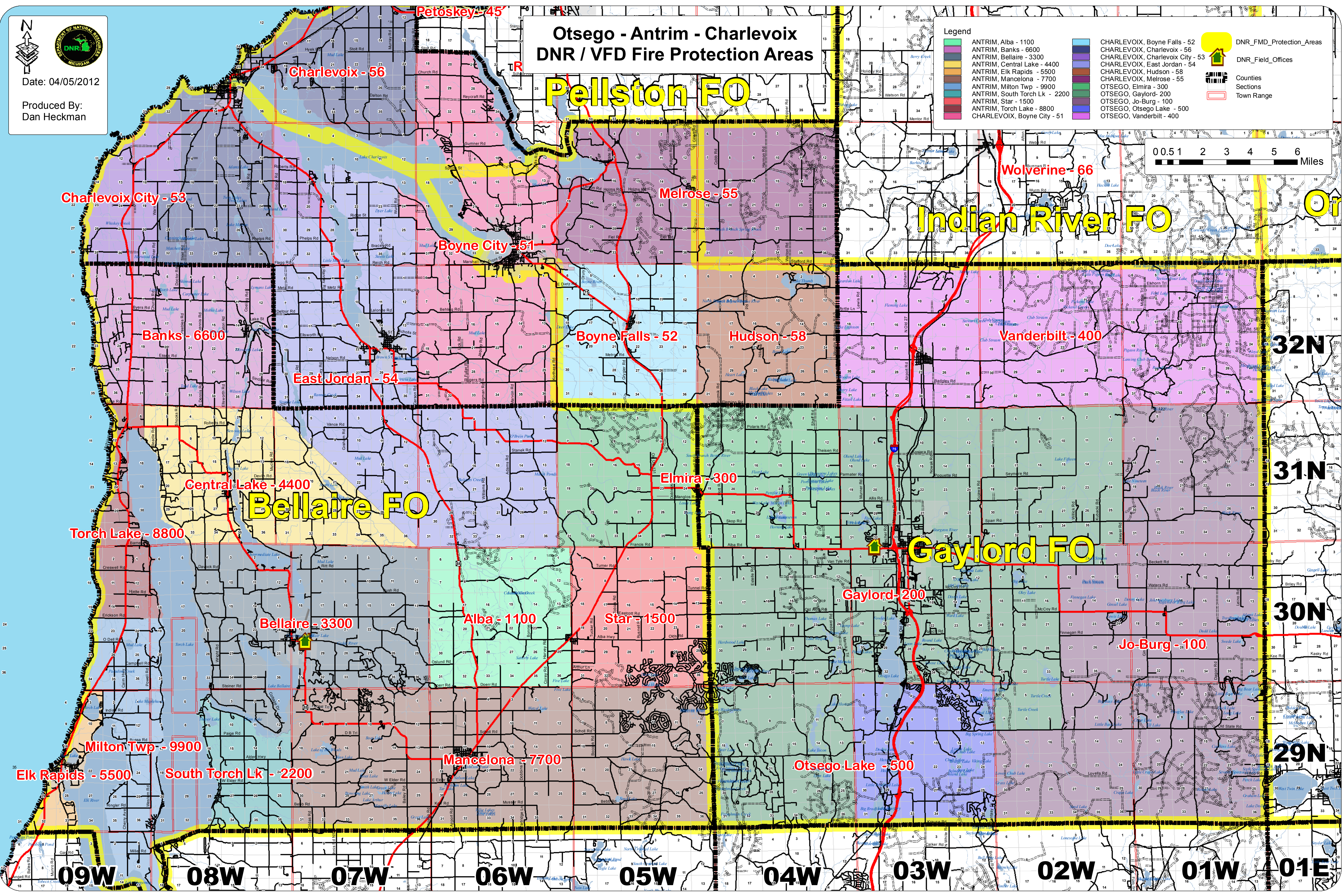
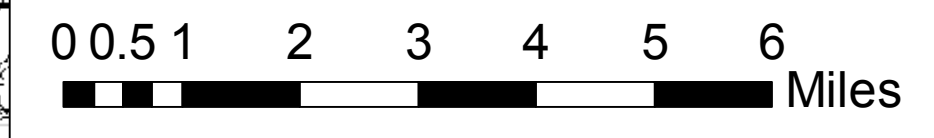
Produced By:
Dan Heckman

Otsego - Antrim - Charlevoix DNR / VFD Fire Protection Areas

Pellston FO

Legend

- | | | | | | |
|--|-------------------------------|--|----------------------------------|--|--------------------------|
| | ANTRIM, Alba - 1100 | | CHARLEVOIX, Boyne Falls - 52 | | DNR_FMD_Protection_Areas |
| | ANTRIM, Banks - 6600 | | CHARLEVOIX, Charlevoix - 56 | | DNR_Field_Offices |
| | ANTRIM, Bellaire - 3300 | | CHARLEVOIX, Charlevoix City - 53 | | Counties |
| | ANTRIM, Central Lake - 4400 | | CHARLEVOIX, East Jordan - 54 | | Sections |
| | ANTRIM, Elk Rapids - 5500 | | CHARLEVOIX, Hudson - 58 | | Town Range |
| | ANTRIM, Mancelona - 7700 | | CHARLEVOIX, Melrose - 55 | | |
| | ANTRIM, Milton Twp - 9900 | | OTSEGO, Elmira - 300 | | |
| | ANTRIM, South Torch Lk - 2200 | | OTSEGO, Gaylord- 200 | | |
| | ANTRIM, Star - 1500 | | OTSEGO, Jo-Burg - 100 | | |
| | ANTRIM, Torch Lake - 8800 | | OTSEGO, Otsego Lake - 500 | | |
| | CHARLEVOIX, Boyne City - 51 | | OTSEGO, Vanderbilt - 400 | | |



Charlevoix City - 53

Charlevoix - 56

Boyne City - 51

Melrose - 55

Wolverine - 66

Banks - 6600

Boyne Falls - 52

Hudson - 58

Vanderbilt - 400

East Jordan - 54

Central Lake - 4400

Elmira - 300

Torch Lake - 8800

Bellaire FO

Gaylord FO

Bellaire - 3300

Alba - 1100

Star - 1500

Gaylord - 200

Jo-Burg - 100

Milton Twp - 9900

Mancelona - 7700

Otsego Lake - 500

Elk Rapids - 5500

South Torch Lk - 2200

09W

08W

07W

06W

05W

04W

03W

02W

01W

01E

32N

31N

30N

29N