



TIMBER SALE MAP

This information provided by authority of Part 525, 1994 PA 451, as amended.

Sale Number 72-625-23	Date 01/12/2024	
Scale 1:10,000	Page 1	Of 1

Forest Management Unit Grayling Mgt Unit	County Crawford	Mapped By: Derek Nellis
		Cruised By: Nellis/Osborn

Township 28N	Range 03W	Section(s) and Subdivision(s) Sec. 13 SWNW,W1/2SW; Sec. 14 SENW,S1/2NE,NESW,N1/2SE,SWSE; Sec. 24 NWNW;
------------------------	---------------------	---

Cover Type			
A = Aspen	J = Jack Pine	O = Oak	U = Upland Brush
B = Paper Birch	K = Rock	P = Lowland Poplar	UM = Upland Mix Forest
C = Cedar	L = Lowland Brush	Q = Mixed Swamp Conifer	V = Bog or Marsh
D = Treed Bog	LM = Lowland Mix Forest	R = Red Pine	W = White Pine
E = Swamp Hardwoods	M = Maple, Beech, Birch	S = Black Spruce	X = Non Stocked
F = Spruce/Fir	MC = Mixed Conifer	T = Tamarack	Y = Sand
G = Grass	MD = Mixed Deciduous	Z = Water	
H = Hemlock	N = Marsh		

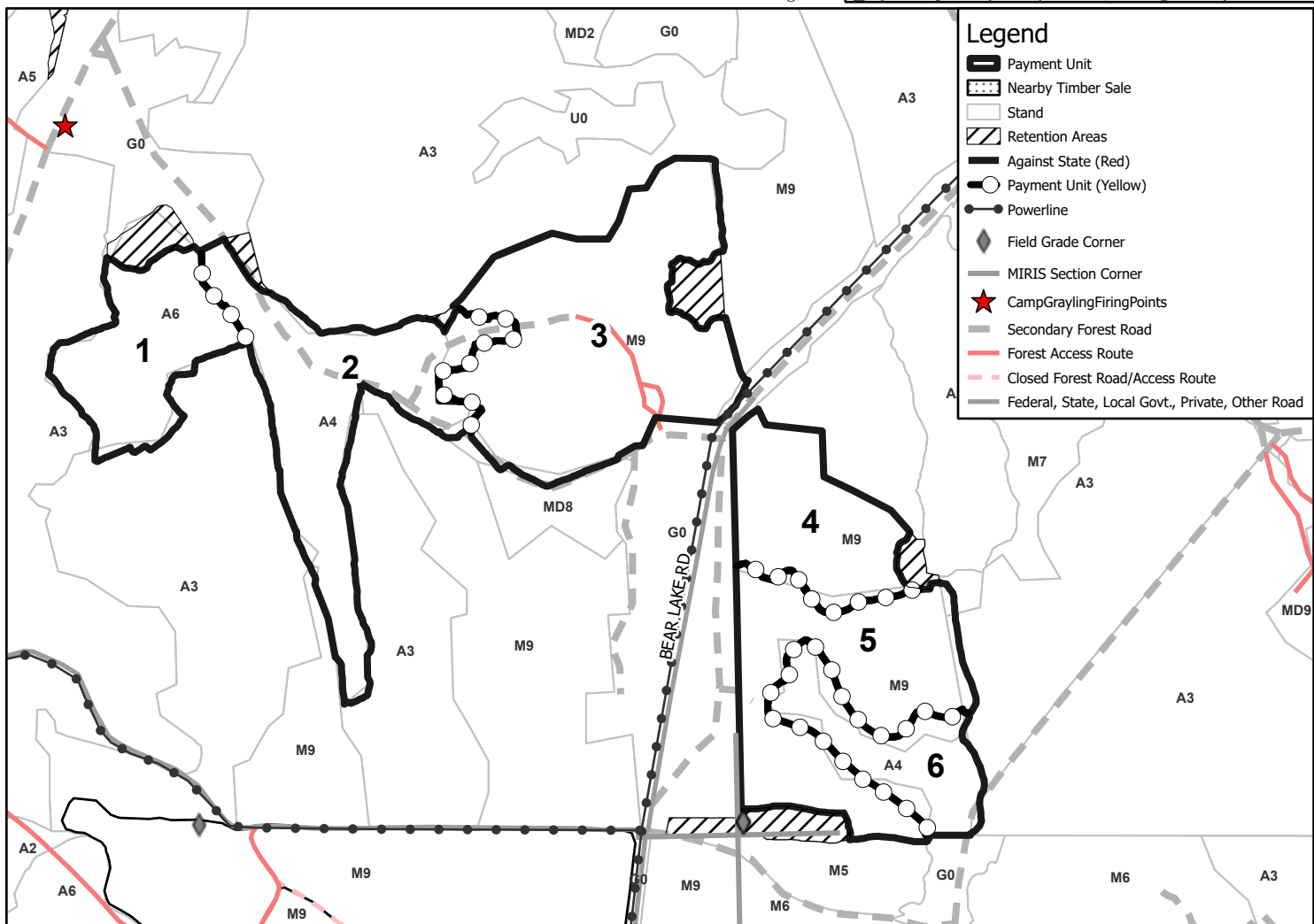
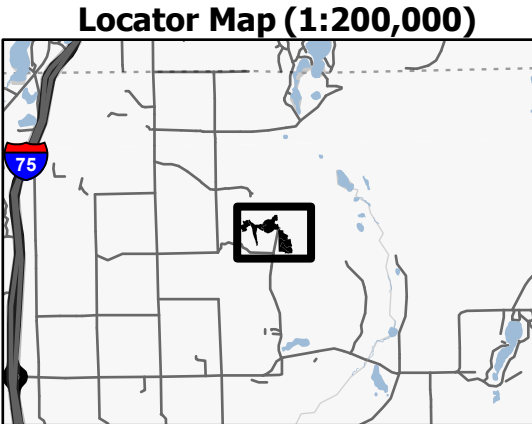
Density	
0 = Non Stocked	5 = Pole Timber Medium
1 = Seedling Sapling Poor	6 = Pole Timber Well
2 = Seedling Sapling Medium	7 = Saw Timber Poor
3 = Seedling Sapling Well	8 = Saw Timber Medium
4 = Pole Timber Poor	9 = Saw Timber Well

PU #	Acres	PU #	Acres
1	12.1	4	12.3
2	20.8	5	20.5
3	31.8	6	9.2



**Let's See
Your ID
Hardwood**

106.7 Acres



Legend	
	Payment Unit
	Nearby Timber Sale
	Stand
	Retention Areas
	Against State (Red)
	Payment Unit (Yellow)
	Powerline
	Field Grade Corner
	MIRIS Section Corner
	CampGraylingFiringPoints
	Secondary Forest Road
	Forest Access Route
	Closed Forest Road/Access Route
	Federal, State, Local Govt., Private, Other Road