



TIMBER SALE MAP

72 - 031

21

This information provided by authority of Part 525, 1994 PA 451, as amended.

Forest Management Unit Grayling		County Crawford	Mapped By Charlebois	Date 09/30/2021	Page 2	of 2
Township 28N	Range 03W	Section(s) and Subdivision(s) Section 31: E1/2		Scale 1:7,920		

Cover Type

A = Aspen	H = Hemlock	N = Marsh	U = Upland Brush
B = Paper Birch	J = Jack Pine	O = Oak	UM = Upland Mixed
C = Cedar	L = Lowland Brush	P = Lowland Poplar	V = Bog or Marsh
D = Tread Bog	LM = Lowland Mixed	Q = Mixed Swamp Conifer	W = White Pine
E = Swamp Hdwoods	M = Mpl, Bch, Brch	R = Red Pine	X = Non Stocked

Density

0 = Non Stocked	5 = Pole Timber Medium
1 = Seedling Sapling Poor	6 = Pole Timber Well
2 = Seedling Sapling Medium	7 = Saw Timber Poor
3 = Seedling Sapling Well	8 = Saw Timber Medium
4 = Pole Timber Poor	9 = Saw Timber Well



Roberts Rd XCS
Compartment 216
35.7 Acres

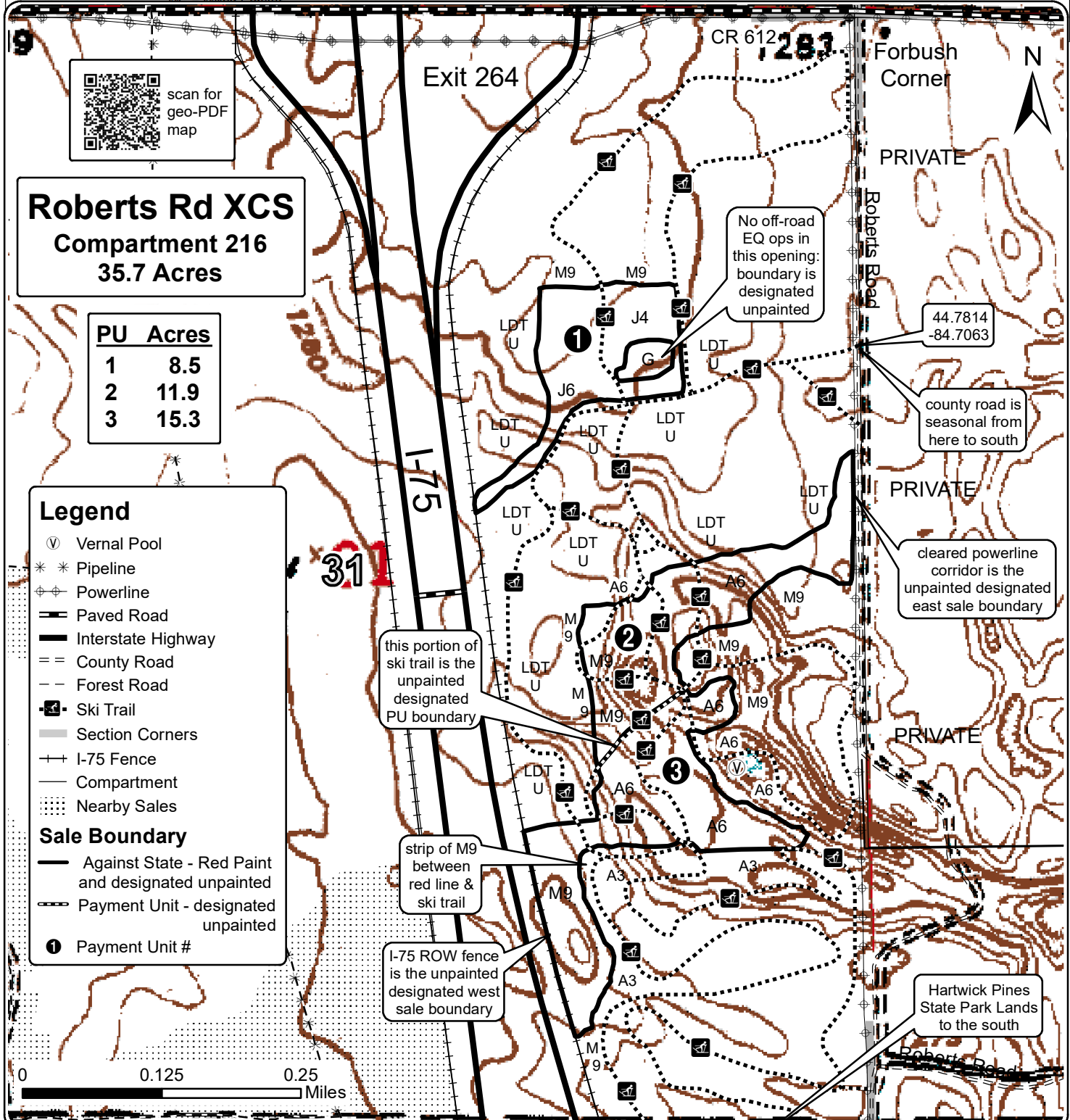
PU	Acres
1	8.5
2	11.9
3	15.3

Legend

- ⓪ Vernal Pool
- * * Pipeline
- ⚡ Powerline
- ▬ Paved Road
- ▬ Interstate Highway
- ▬ County Road
- ▬ Forest Road
- ⚡ Ski Trail
- ▬ Section Corners
- ▬ I-75 Fence
- ▬ Compartment
- ⋯ Nearby Sales

Sale Boundary

- ▬ Against State - Red Paint and designated unpainted
- ▬ Payment Unit - designated unpainted
- ① Payment Unit #



No off-road EQ ops in this opening; boundary is designated unpainted

44.7814
-84.7063

county road is seasonal from here to south

cleared powerline corridor is the unpainted designated east sale boundary

this portion of ski trail is the unpainted designated PU boundary

strip of M9 between red line & ski trail

I-75 ROW fence is the unpainted designated west sale boundary

Hartwick Pines State Park Lands to the south

