



TIMBER SALE MAP

This information provided by authority of Part 525, 1994 PA 451, as amended.

| | | |
|---------------------------------|--------------------|---------|
| Sale Number 72-624-23 | Date 11/30/2023 | |
| Scale 1:15,840 | Page 1 | Of 1 |

| | | |
|---|--------------------|---|
| Forest Management Unit Grayling Mgt Unit | County Crawford | Mapped By: Derek Nellis Cruised By: Derek Nellis |
|---|--------------------|---|

| | | |
|-----------------|--------------|---|
| Township 26N | Range 04W | Section(s) and Subdivision(s) Sec. 25 SWSW; Sec. 35 SENW,NE,NESW,NWSE; Sec. 36 NWNW,S1/2NW; |
|-----------------|--------------|---|

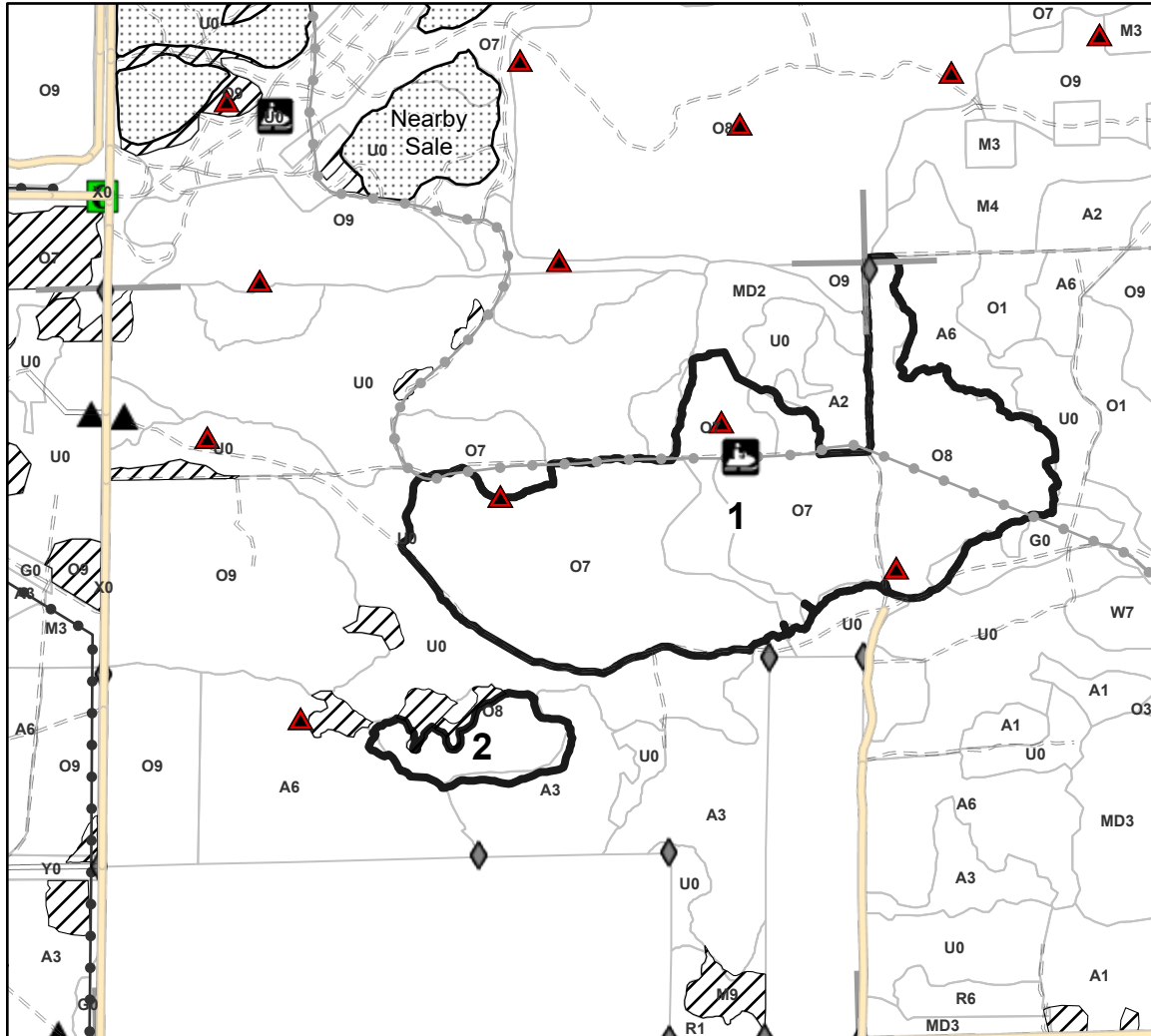
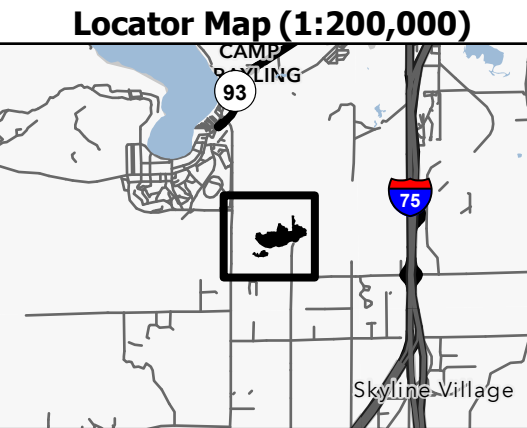
| Cover Type | | | |
|---------------------|-------------------------|-------------------------|------------------------|
| A = Aspen | J = Jack Pine | O = Oak | U = Upland Brush |
| B = Paper Birch | K = Rock | P = Lowland Poplar | UM = Upland Mix Forest |
| C = Cedar | L = Lowland Brush | Q = Mixed Swamp Conifer | V = Bog or Marsh |
| D = Treed Bog | LM = Lowland Mix Forest | R = Red Pine | W = White Pine |
| E = Swamp Hardwoods | M = Maple, Beech, Birch | S = Black Spruce | X = Non Stocked |
| F = Spruce/Fir | MC = Mixed Conifer | T = Tamarack | Y = Sand |
| G = Grass | MD = Mixed Deciduous | Z = Water | |
| H = Hemlock | N = Marsh | | |

| Density | |
|-----------------------------|------------------------|
| 0 = Non Stocked | 5 = Pole Timber Medium |
| 1 = Seedling Sapling Poor | 6 = Pole Timber Well |
| 2 = Seedling Sapling Medium | 7 = Saw Timber Poor |
| 3 = Seedling Sapling Well | 8 = Saw Timber Medium |
| 4 = Pole Timber Poor | 9 = Saw Timber Well |

| PU # | Acres |
|------|-------|
| 1 | 134.5 |
| 2 | 12 |

Concrete Corners Oak

146.5 Acres



Legend

- Sale Boundary (Red)
- Nearby Timber Sale
- Stand
- Retention Areas
- Recreational Trail
- Powerline
- Primary Forest Road
- Secondary Forest Road
- Forest Access Route
- Administrative Access Only
- Non-DNR Road
- Field Grade Corner
- Berm
- Gate
- MIRIS Section Corner
- CampGraylingLandNavMarkers

