



TIMBER SALE MAP

This information provided by authority of Part 525, 1994 PA 451, as amended.

Sale Number	Year
72 - 015	19

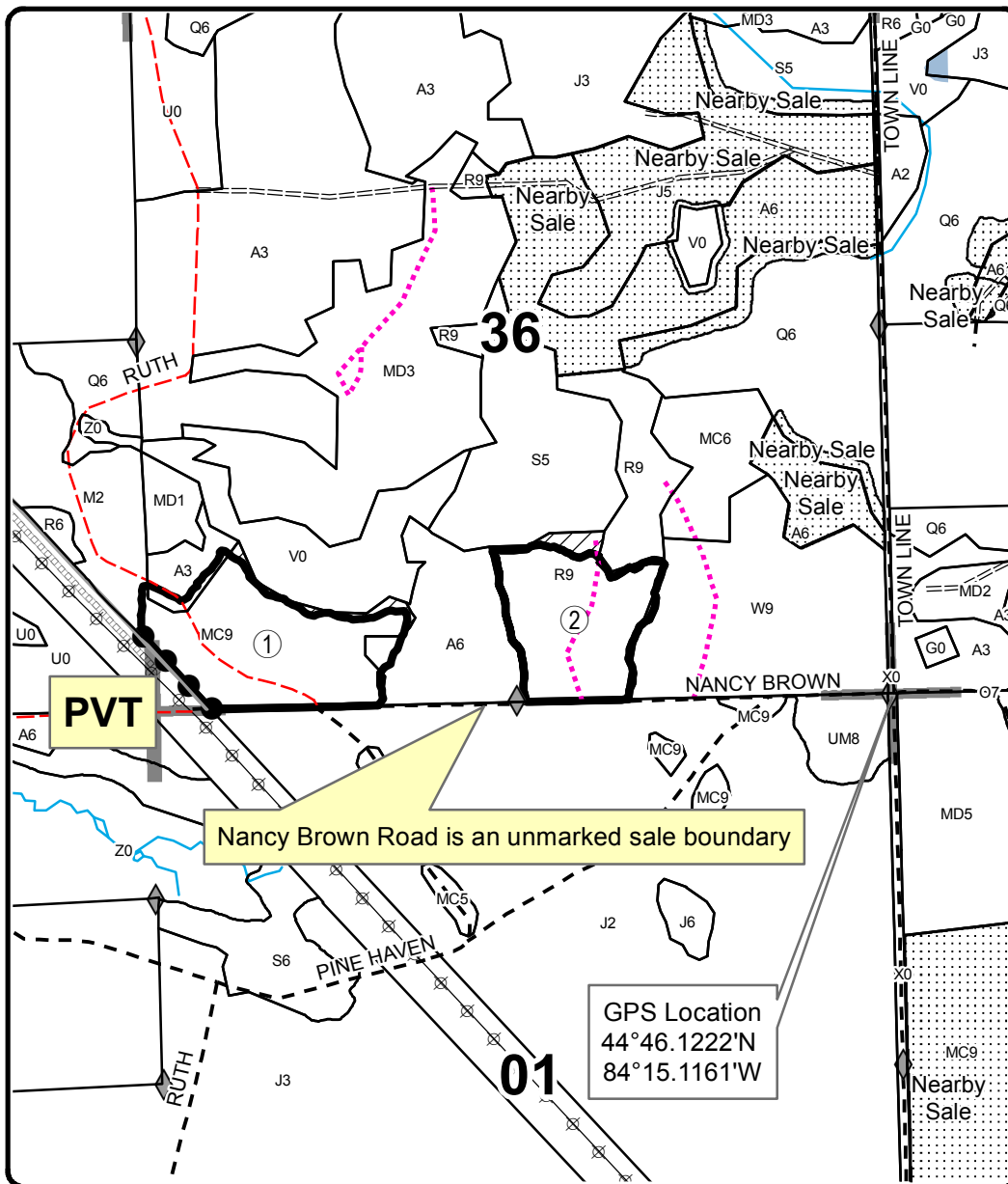
Forest Management Unit Grayling Management Unit		County Oscoda County	Mapped By Colton Behrmann	Date 06/19/2019	Page 1	of 1
Township 28N	Range 01E	Section(s) and Subdivision(s) Section 36 S1/2SW, SW5E		Scale 1:15,840		
Cover Type				Density		
A = Aspen	H = Hemlock	N = Marsh	U = Upland Brush	0 = Non Stocked	5 = Pole Timber Medium	
B = Paper Birch	J = Jack Pine	O = Oak	UM = Upland Mixed	1 = Seedling Sapling Poor	6 = Pole Timber Well	
C = Cedar	L = Lowland Brush	P = Lowland Poplar	V = Bog or Marsh	2 = Seedling Sapling Medium	7 = Saw Timber Poor	
D = Treed Bog	LM = Lowland Mixed	Q = Mixed Swamp Conifer	W = White Pine	3 = Seedling Sapling Well	8 = Saw Timber Medium	
E = Swamp Hdwoods	M = Mpl, Bch, Brch	R = Red Pine	X = Non Stocked	4 = Pole Timber Poor	9 = Saw Timber Well	
F = Spruce Fir	MC = Mixed Conifer	S = Black Spruce	Z = Water			
G = Grass	MD = Mixed Deciduous	T = Tamarack				

PU	Acres
1	29.8
2	22.2

Woods Goat Morgue

Compartment 019

52 Acres



Legend

- Stand Boundaries
- Field Grade Corners
- Forest Access Route
- Gravel Road
- County Road - Seasonal
- Private
- Temporary Management Access
- Pipeline
- Powerline
- Lakes and Rivers
- Retention Area
- Against State (Red)
- Private Line (Blue)
- Nearby Timber Sales
- Section Corners

Locator Map
1:200,000

