



TIMBER SALE MAP

This information provided by authority of Part 525, 1994 PA 451, as amended.

Forest Management Unit	County	Mapped By	Date	Page	of
Grayling	Crawford	Scott McClarren	07/21/2022	1	1
Township	Range	Section(s) and Subdivision(s)	Scale		
25N	04W	Sec 8 NE, Sec 9 N1/2SW, SE, NWNW, S1/2NW, S1/2NE	1:15,840		

Cover Type

A = Aspen	H = Hemlock	N = Marsh	U = Upland Brush
B = Paper Birch	J = Jack Pine	O = Oak	UM = Upland Mixed
C = Cedar	L = Lowland Brush	P = Lowland Poplar	V = Bog or Marsh
D = Treed Bog	LM = Lowland Mixed	Q = Mixed Swamp Conifer	W = White Pine
E = Swamp Hdwoods	M = Mpl, Bch, Brch	R = Red Pine	X = Non Stocked
F = Spruce Fir	MC = Mixed Conifer	S = Black Spruce	Z = Water
G = Grass	MD = Mixed Deciduous	T = Tamarack	

Density

0 = Non Stocked	5 = Pole Timber Medium
1 = Seedling Sapling Poor	6 = Pole Timber Well
2 = Seedling Sapling Medium	7 = Saw Timber Poor
3 = Seedling Sapling Well	8 = Saw Timber Medium
4 = Pole Timber Poor	9 = Saw Timber Well

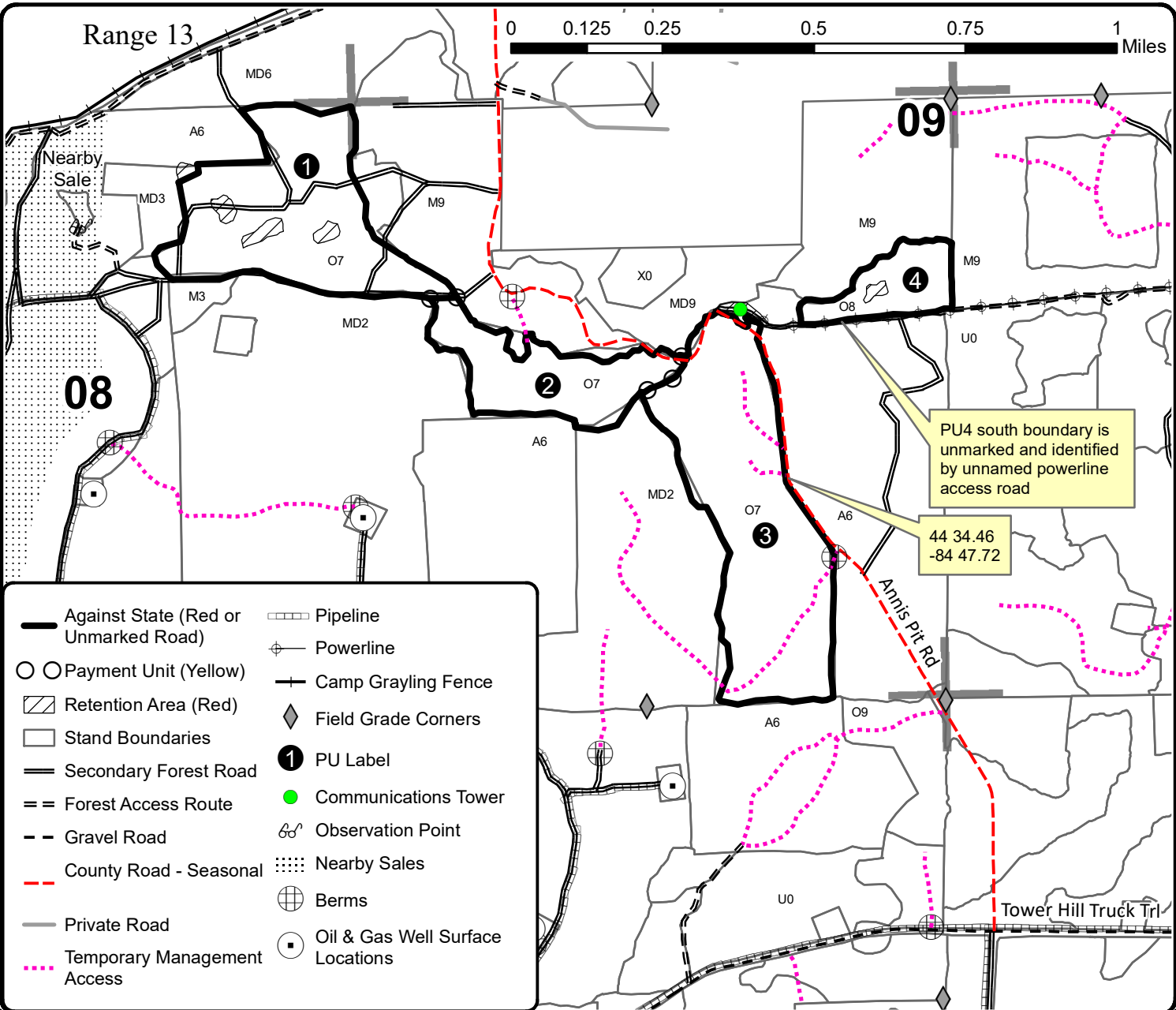
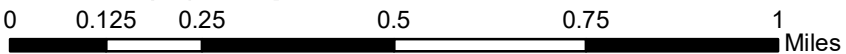
PU	Acres
1	51.1
2	26.2
3	69.2
4	12.7



Oak Along the Watchtower

Compartment 188

159.2 Acres



Against State (Red or Unmarked Road)	Pipeline
Payment Unit (Yellow)	Powerline
Retention Area (Red)	Camp Grayling Fence
Stand Boundaries	Field Grade Corners
Secondary Forest Road	PU Label
Forest Access Route	Communications Tower
Gravel Road	Observation Point
County Road - Seasonal	Nearby Sales
Private Road	Berms
Temporary Management Access	Oil & Gas Well Surface Locations