



TIMBER SALE MAP

This information provided by authority of Part 525, 1994 PA 451, as amended.

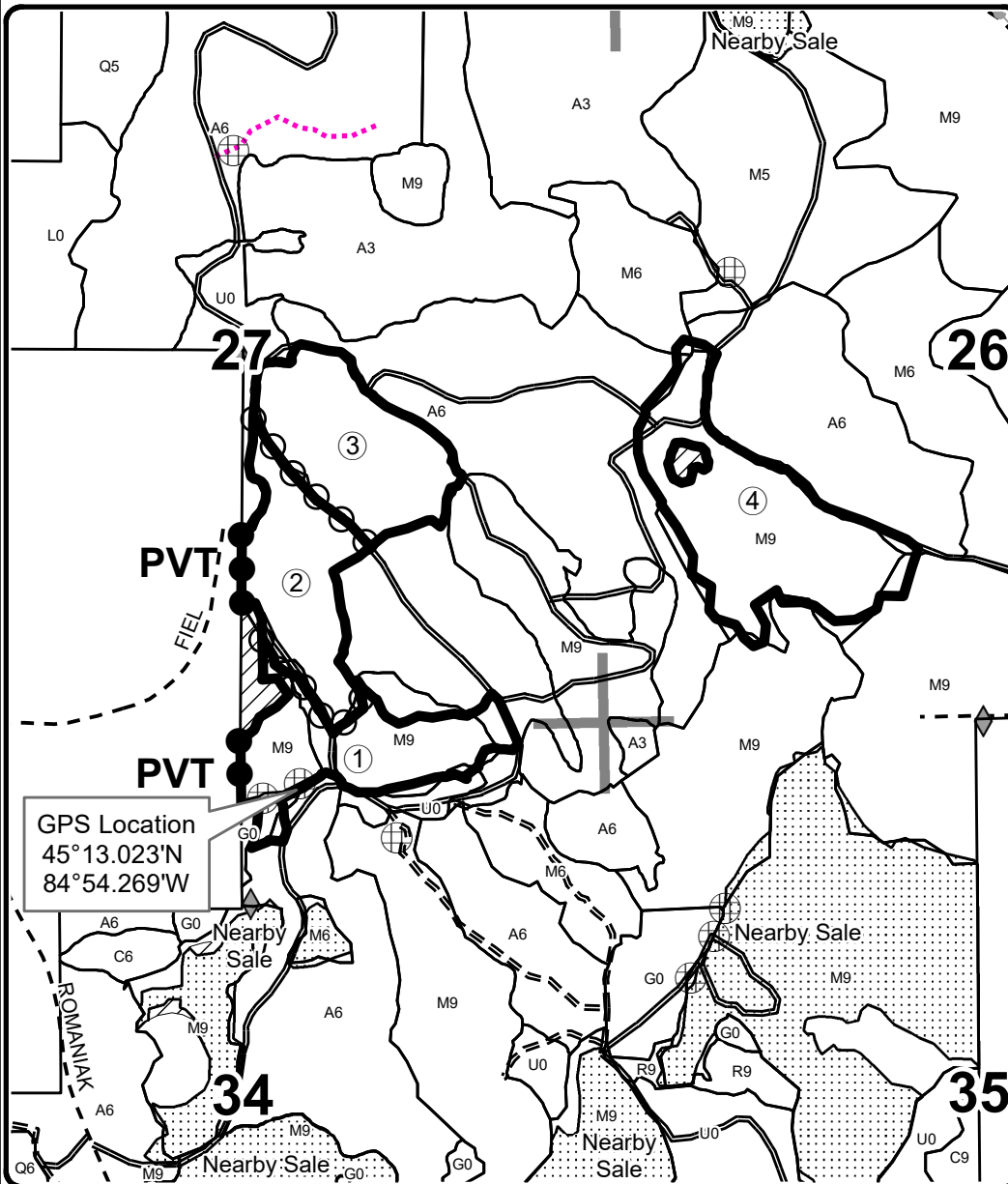
| | | | | | | |
|-----------------------------------|----------------------|---|--------------------------|-----------------------------|------------------------|---------|
| Forest Management Unit Gaylord | | County Charlevoix | Mapped By Matt Foster | Date 7/13/2021 | Page 1 | of 1 |
| Township 33N | Range 05W | Section(s) and Subdivision(s) Sec 26:SWNW, SW1/4; Sec 27:SWNE, SE; Sec 34:N1/2NE | | Scale 1:15,840 | | |
| Cover Type | | | | Density | | |
| A = Aspen | H = Hemlock | N = Marsh | U = Upland Brush | 0 = Non Stocked | 5 = Pole Timber Medium | |
| B = Paper Birch | J = Jack Pine | O = Oak | UM = Upland Mixed | 1 = Seedling Sapling Poor | 6 = Pole Timber Well | |
| C = Cedar | L = Lowland Brush | P = Lowland Poplar | V = Bog or Marsh | 2 = Seedling Sapling Medium | 7 = Saw Timber Poor | |
| D = Treed Bog | LM = Lowland Mixed | Q = Mixed Swamp Conifer | W = White Pine | 3 = Seedling Sapling Well | 8 = Saw Timber Medium | |
| E = Swamp Hdwoods | M = Mpl, Bch, Brch | R = Red Pine | X = Non Stocked | 4 = Pole Timber Poor | 9 = Saw Timber Well | |
| F = Spruce Fir | MC = Mixed Conifer | S = Black Spruce | Z = Water | | | |
| G = Grass | MD = Mixed Deciduous | T = Tamarack | | | | |

| PU | Acres |
|----|-------|
| 1 | 24.4 |
| 2 | 23.4 |
| 3 | 27.8 |
| 4 | 40.1 |

Hawkeye Mix

Compartment 39

115.7 Acres



Legend

- Sale Boundary (Red)
- Payment Unit (Yellow)
- Private Line (Blue)
- Retention Area (Red)
- Stand Boundaries
- Recreational Trail
- Field Grade Corners
- Secondary Forest Road
- Forest Access Route
- Gravel Road
- Temporary Management Access
- Nearby Timber Sales
- Section Corners
- Berms

Avenza Map QR Code

