

TIMBER SALE MAP

This information provided by authority of Part 525, 1994 PA 451, as amended.

Sale Number 52-011-24	Date 08/16/2024
Scale 1:7,920	Page 1
	Of 1

Forest Management Unit Gaylord Mgt Unit	County Charlevoix	Mapped By: VanHouten
		Cruised By: VanHouten, Neuwirth

Township 33N	Range 04W	Section(s) and Subdivision(s) Sec. 6 NENW,NE;
------------------------	---------------------	---

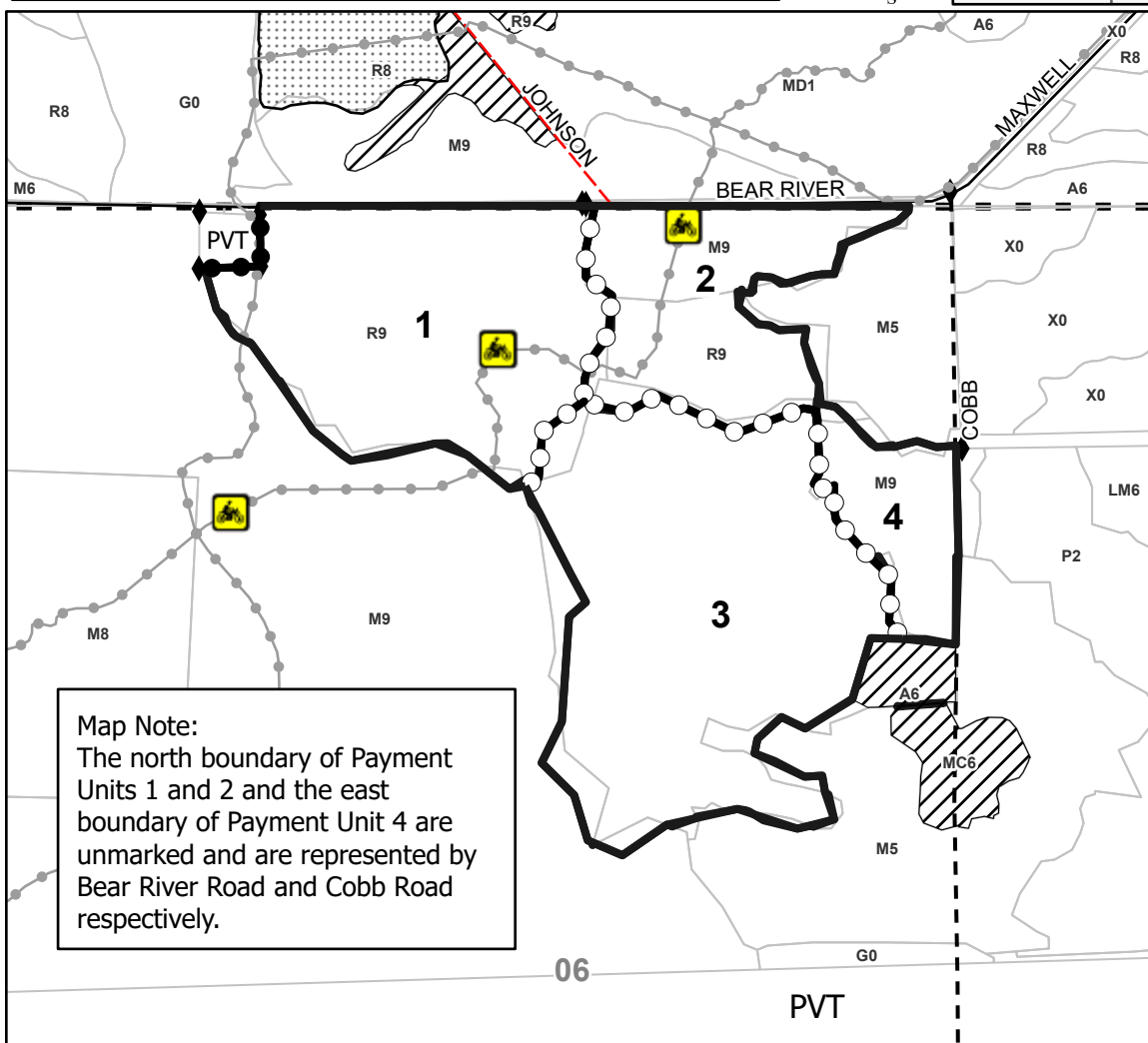
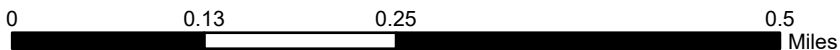
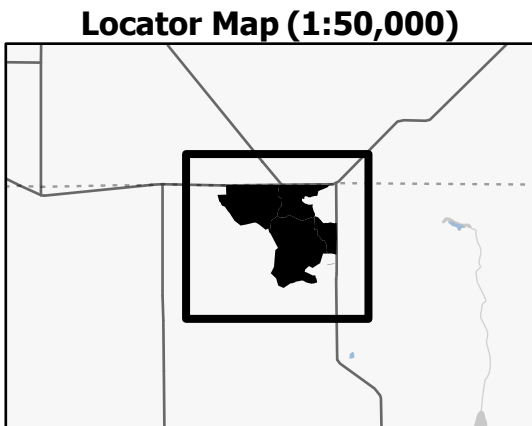
Cover Type			
A = Aspen	J = Jack Pine	O = Oak	U = Upland Brush
B = Paper Birch	K = Rock	P = Lowland Poplar	UM = Upland Mix Forest
C = Cedar	L = Lowland Brush	Q = Mixed Swamp Conifer	V = Bog or Marsh
D = Treed Bog	LM = Lowland Mix Forest	R = Red Pine	W = White Pine
E = Swamp Hardwoods	M = Maple, Beech, Birch	S = Black Spruce	X = Non Stocked
F = Spruce/Fir	MC = Mixed Conifer	T = Tamarack	Y = Sand
G = Grass	MD = Mixed Deciduous	Z = Water	
H = Hemlock	N = Marsh		

Density	
0 = Non Stocked	5 = Pole Timber Medium
1 = Seedling Sapling Poor	6 = Pole Timber Well
2 = Seedling Sapling Medium	7 = Saw Timber Poor
3 = Seedling Sapling Well	8 = Saw Timber Medium
4 = Pole Timber Poor	9 = Saw Timber Well

PU #	Acres
1	22.3
2	12.4
3	31.6
4	5.6

Triple Treatment Trifecta

71.9 Acres



Legend

- Payment Unit
- Nearby Timber Sale
- Stand
- Retention Areas
- Against State (Red)
- Payment Unit (Yellow)
- Private Line (Blue)
- Recreational Trail
- Paved Road
- Gravel Road
- County Road - Seasonal
- Private Road
- Tomahawk Motorcycle Trail
- Survey Corner

Map Note:
The north boundary of Payment Units 1 and 2 and the east boundary of Payment Unit 4 are unmarked and are represented by Bear River Road and Cobb Road respectively.

Use QR Code to open Map in App

