



TIMBER SALE MAP

This information provided by authority of Part 525, 1994 PA 451, as amended.

Sale Number

73-003

Date

06/18/2024

Forest Management Unit

Gladwin

County

Gladwin

Mapped By: Steven Nyhoff

Cruised By: Steven Nyhoff

Scale

1: 24,000

Page

1

Of

1

Township

T18N

Range

R02E

Section(s) and

Subdivision(s) S8: E1/2NE, S1/2NW, S17: NW1/4, NE1/4, SW1/4, SE1/4, S18: E1/2NW

Cover Type

A = Aspen	J = Jack Pine	O = Oak	U = Upland Brush
B = Paper Birch	K = Rock	P = Lowland Poplar	UM = Upland Mx Forest
C = Cedar	L = Lowland Brush	Q = Mxed Swamp Conifer	V = Bog or Marsh
D = Treed Bog	LM = Lowland Mx Forest	R = Red Pine	W = White Pine
E = Swamp Hardwoods	M = Maple, Beech, Birch	S = Black Spruce	X = Non Stocked
F = Spruce/Fir	MC = Mxed Conifer	T = Tamarack	Y = Sand
G = Grass	MD = Mxed Deciduous	Z = Water	
H = Hemlock	N = Marsh		

Density

0 = Non Stocked	5 = Pole Timber Medium
1 = Seedling Sapling Poor	6 = Pole Timber Well
2 = Seedling Sapling Medium	7 = Saw Timber Poor
3 = Seedling Sapling Well	8 = Saw Timber Medium
4 = Pole Timber Poor	9 = Saw Timber Well

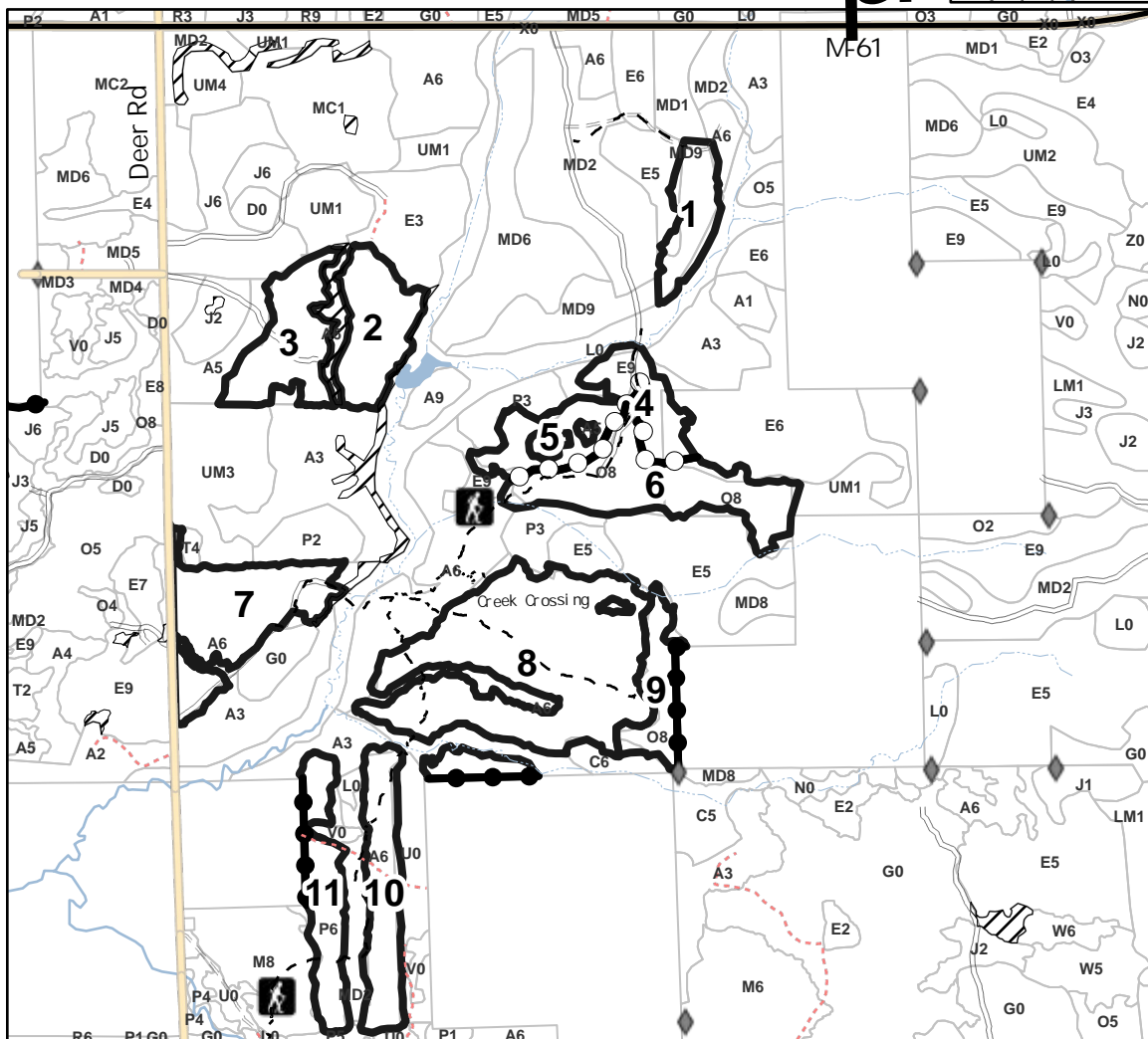
Locator Map (1: 200,000)



PU #	Acres	PU #	Acres	PU #	Acres
1	14.9	5	15.7	9	14.3
2	23.5	6	39.1	10	24.6
3	24.9	7	36.5	11	21.3
4	14.3	8	95.7		

61 Fish Creek

324.8 Acres



Legend

- Payment Unit
- Stand
- Retention Areas
- Against State (Red)
- Payment Unit (Yellow)
- Private Line (Blue)
- Secondary Forest Road
- Forest Access Route
- Administrative Access Only
- Non-DNR Road
- Highway
- Field Grade Corner

Use QR Code to open Map in App

