

TIMBER SALE MAP

This information provided by authority of Part 525, 1994 PA 451, as amended.

Sale Number 73-009-24	Date 08/17/2024
Scale 1:15,840	Page 1
	Of 1

Forest Management Unit Gladwin Mgt Unit	County Gladwin	Mapped By: Behrmann
		Cruised By: Behrmann

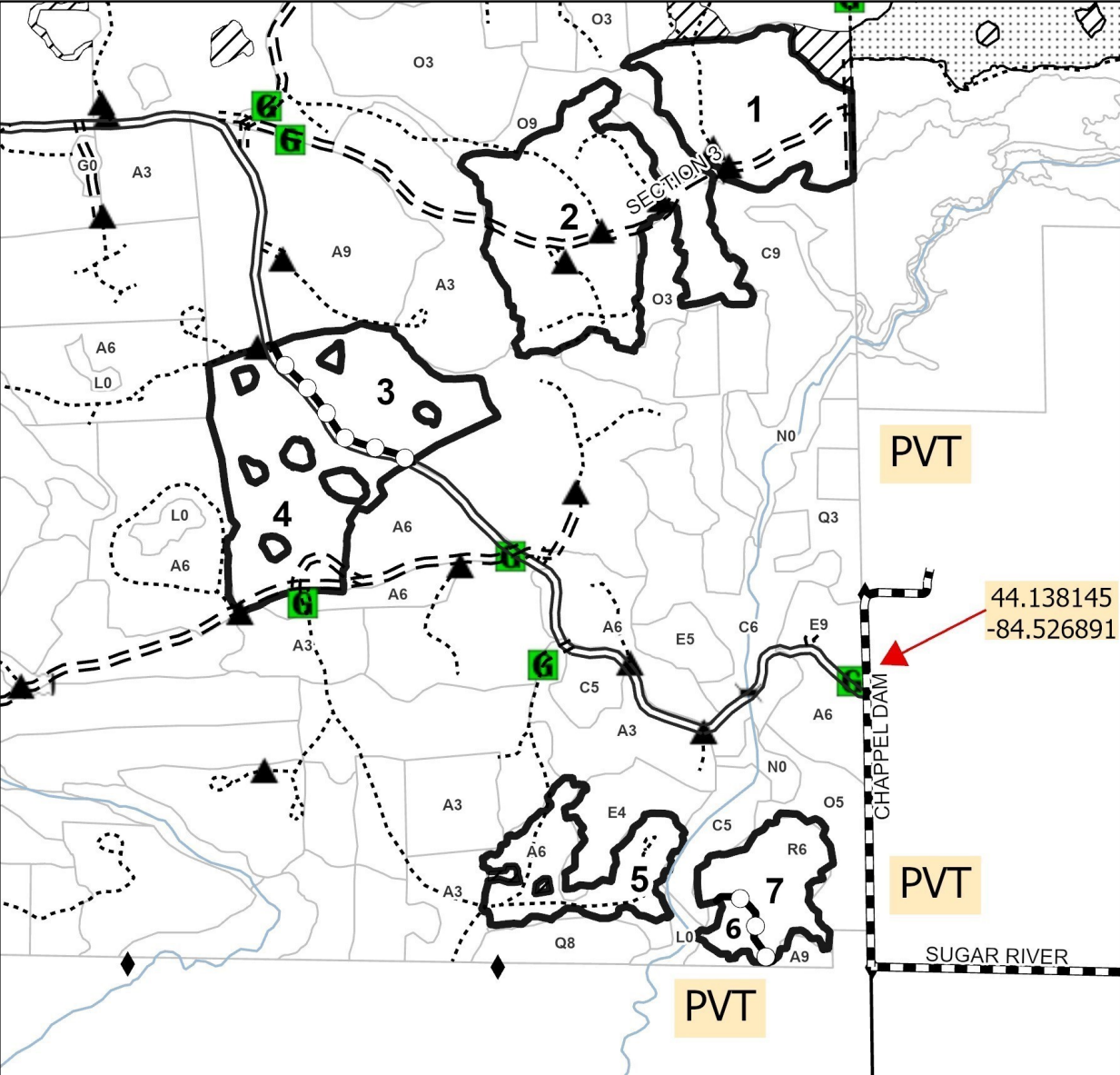
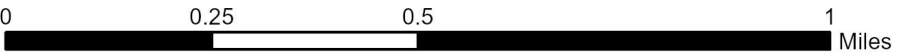
Township 20N	Range 02W	Section(s) and Subdivision(s) Sec. 10 NW,N1/2NE,SWNE,N1/2SW,SESW; Sec. 10 S1/2SE; Sec. 3 SESW,NESE,S1/2SE;
-----------------	--------------	---

Cover Type			
A = Aspen	J = Jack Pine	O = Oak	U = Upland Brush
B = Paper Birch	K = Rock	P = Lowland Poplar	UM = Upland Mix Forest
C = Cedar	L = Lowland Brush	Q = Mixed Swamp Conifer	V = Bog or Marsh
D = Treed Bog	LM = Lowland Mix Forest	R = Red Pine	W = White Pine
E = Swamp Hardwoods	M = Maple, Beech, Birch	S = Black Spruce	X = Non Stocked
F = Spruce/Fir	MC = Mixed Conifer	T = Tamarack	Y = Sand
G = Grass	MD = Mixed Deciduous	Z = Water	
H = Hemlock	N = Marsh		

Density	
0 = Non Stocked	5 = Pole Timber Medium
1 = Seedling Sapling Poor	6 = Pole Timber Well
2 = Seedling Sapling Medium	7 = Saw Timber Poor
3 = Seedling Sapling Well	8 = Saw Timber Medium
4 = Pole Timber Poor	9 = Saw Timber Well

PU #	Acres	PU #	Acres
1	27.3	5	16.8
2	45.9	6	2.9
3	18.6	7	12.6
4	31.4		

Young Sow Hideaway
155.5 Acres



Legend

- Against State (Red)
- Nearby Timber Sale
- Stand
- Retention Areas
- Payment Unit (Yellow)
- Primary Forest Road
- Forest Access Route
- Administrative Access Only
- Paved Road
- Government Gravel/Dirt
- Private Gravel/Dirt
- Survey Corners
- Bridge
- Culvert
- Berm
- Gate

Use QR Code to open Map in App

