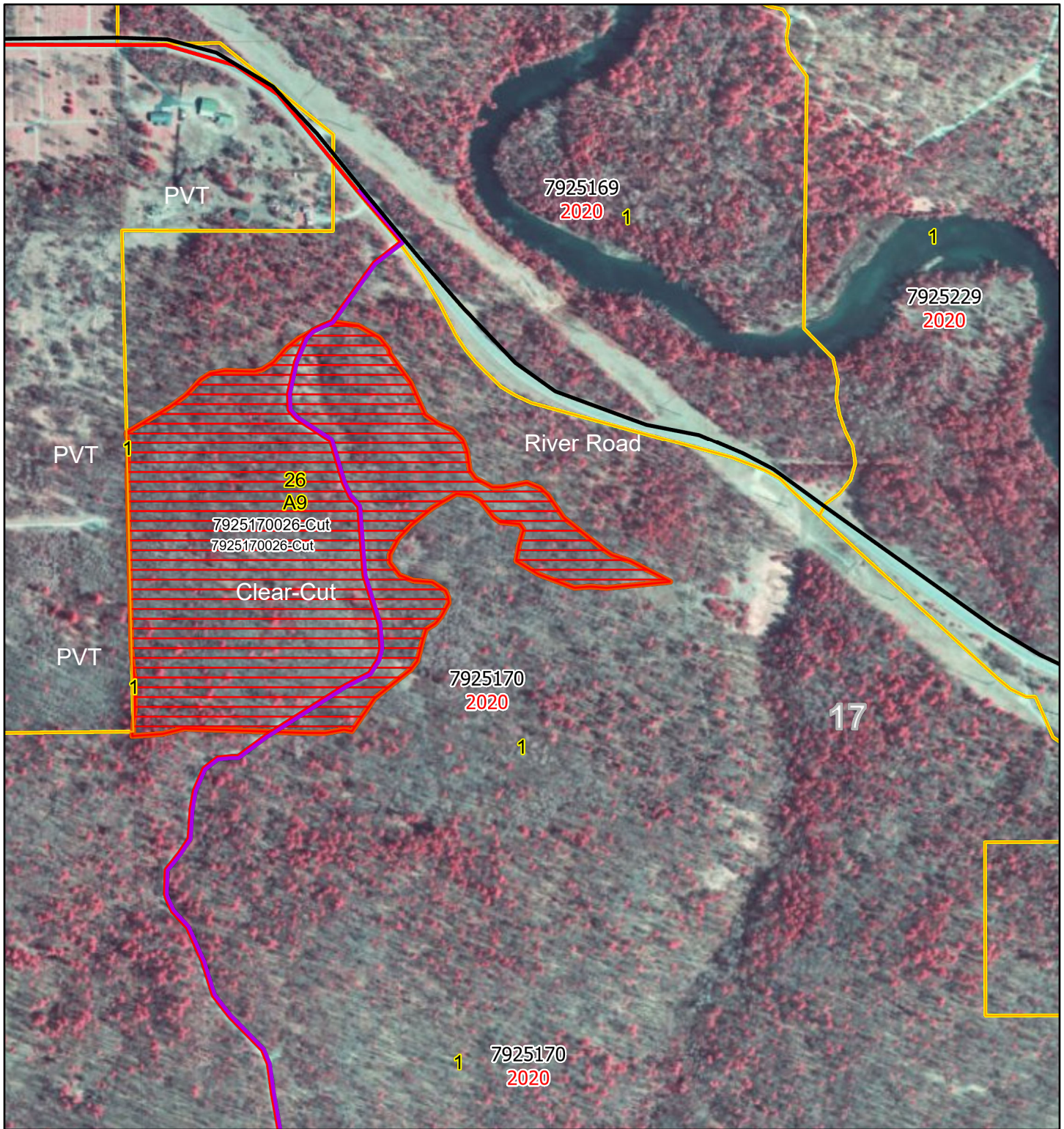
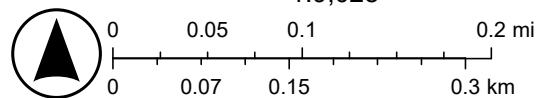


Stand26GNA2GapMarkingContractMap



1/22/2025

- | | |
|-----------------------|-----------------------------|
| TownRange | Compartments Outline |
| Sections | Good Neighbor Authority |
| Township | Treatments |
| DNR Roads | Clearcut (w/Reserves) |
| Paved Roads | Treatments Outline |
| Trails | Stands Outline |
| Designated ATV Trails | Michigan_imagery_CIR_public |



Michigan Department of Natural Resources
Stand 26 only needs boundary work completed
 Follow Aspen cover type for southern boundary
 Follow GPS line for N and E boundaries as the adjacent
 area is designated old growth.