

**TIMBER SALE MAP**

This information provided by authority of Part 525, 1994 PA 451, as amended.

Sale Number <b>72-010-24</b>	Date <b>08/30/2024</b>	
Scale <b>1:20,000</b>	Page <b>1</b>	Of <b>1</b>

Forest Management Unit Grayling Mgt Unit	County Oscoda	Mapped By: M. Lovelace Cruised By: M. Lovelace
---	------------------	---

Township 28N	Range 01E	Section(s) and Subdivision(s) Sec. 27 SENW,SW; Sec. 33 SESE; Sec. 34 NW,NWSW,S1/2SW;
-----------------	--------------	--

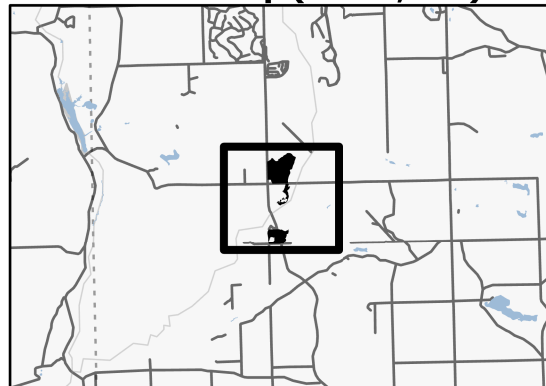
**Cover Type**

A = Aspen	J = Jack Pine	O = Oak	U = Upland Brush
B = Paper Birch	K = Rock	P = Lowland Poplar	UM = Upland Mix Forest
C = Cedar	L = Lowland Brush	Q = Mixed Swamp Conifer	V = Bog or Marsh
D = Treed Bog	LM = Lowland Mix Forest	R = Red Pine	W = White Pine
E = Swamp Hardwoods	M = Maple, Beech, Birch	S = Black Spruce	X = Non Stocked
F = Spruce/Fir	MC = Mixed Conifer	T = Tamarack	Y = Sand
G = Grass	MD = Mixed Deciduous	Z = Water	
H = Hemlock	N = Marsh		

**Density**

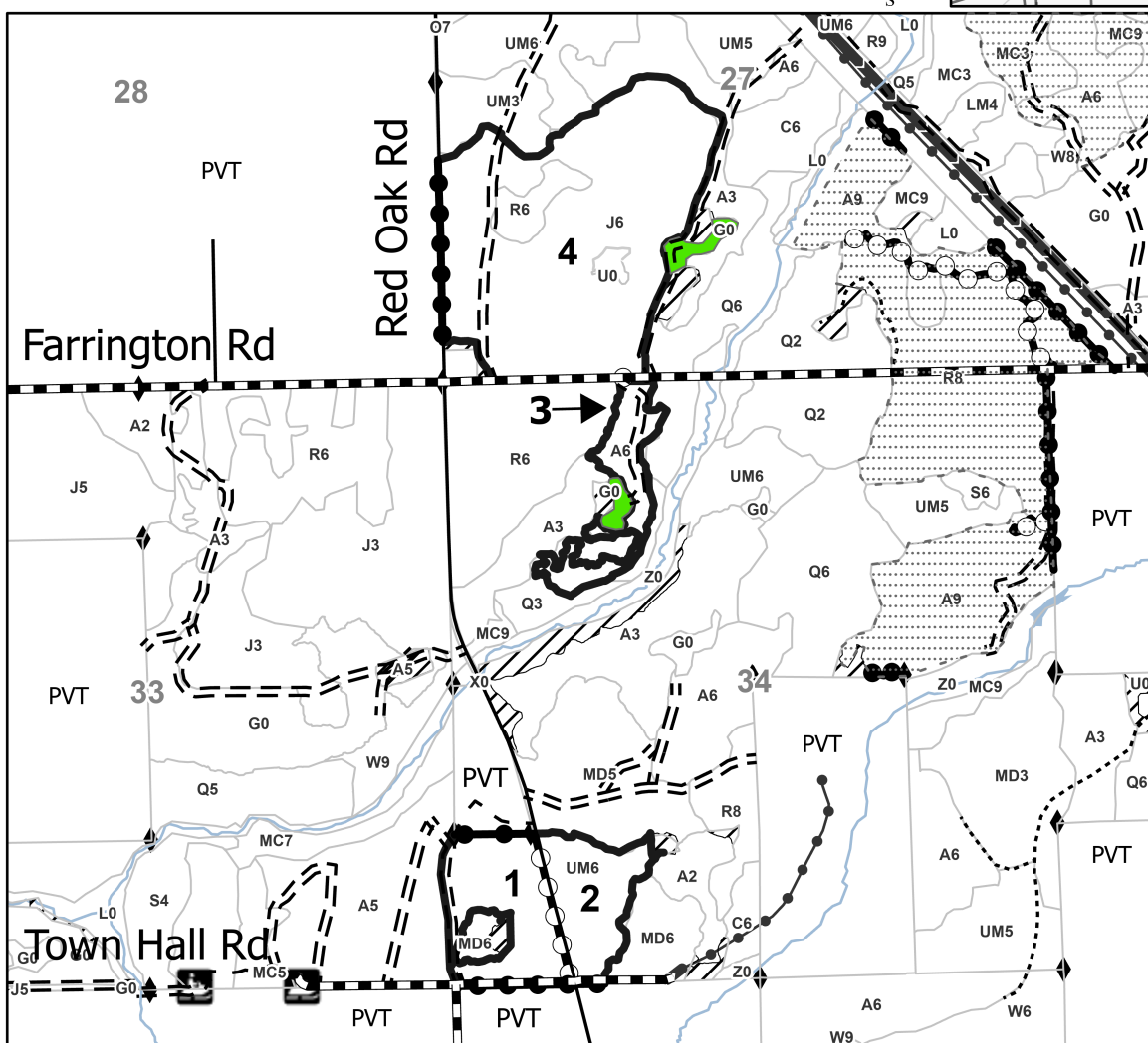
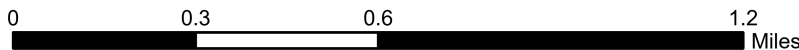
0 = Non Stocked	5 = Pole Timber Medium
1 = Seedling Sapling Poor	6 = Pole Timber Well
2 = Seedling Sapling Medium	7 = Saw Timber Poor
3 = Seedling Sapling Well	8 = Saw Timber Medium
4 = Pole Timber Poor	9 = Saw Timber Well

**Locator Map (1:200,000)**



PU #	Acres
1	23.8
2	18.8
3	14.3
4	105.6

**Class Eh Mix**  
**Compartment 72020**  
**162.4 Acres**



**Legend**

- Against State (Red)
- Stand
- Retention Areas
- Wildlife Opening
- Against State (Orange)
- Payment Unit (Yellow)
- Private Line (Blue)
- Pipeline
- Powerline
- Primary Forest Road
- Forest Access Route
- Administrative Access Only
- Paved Road
- Government Gravel/Dirt
- Private Gravel/Dirt
- Field Grade Corner

Payment unit boundaries along Red Oak Rd, Farrington Rd and Town line Rd are not marked with paint.

Use QR Code to open Map in App

