



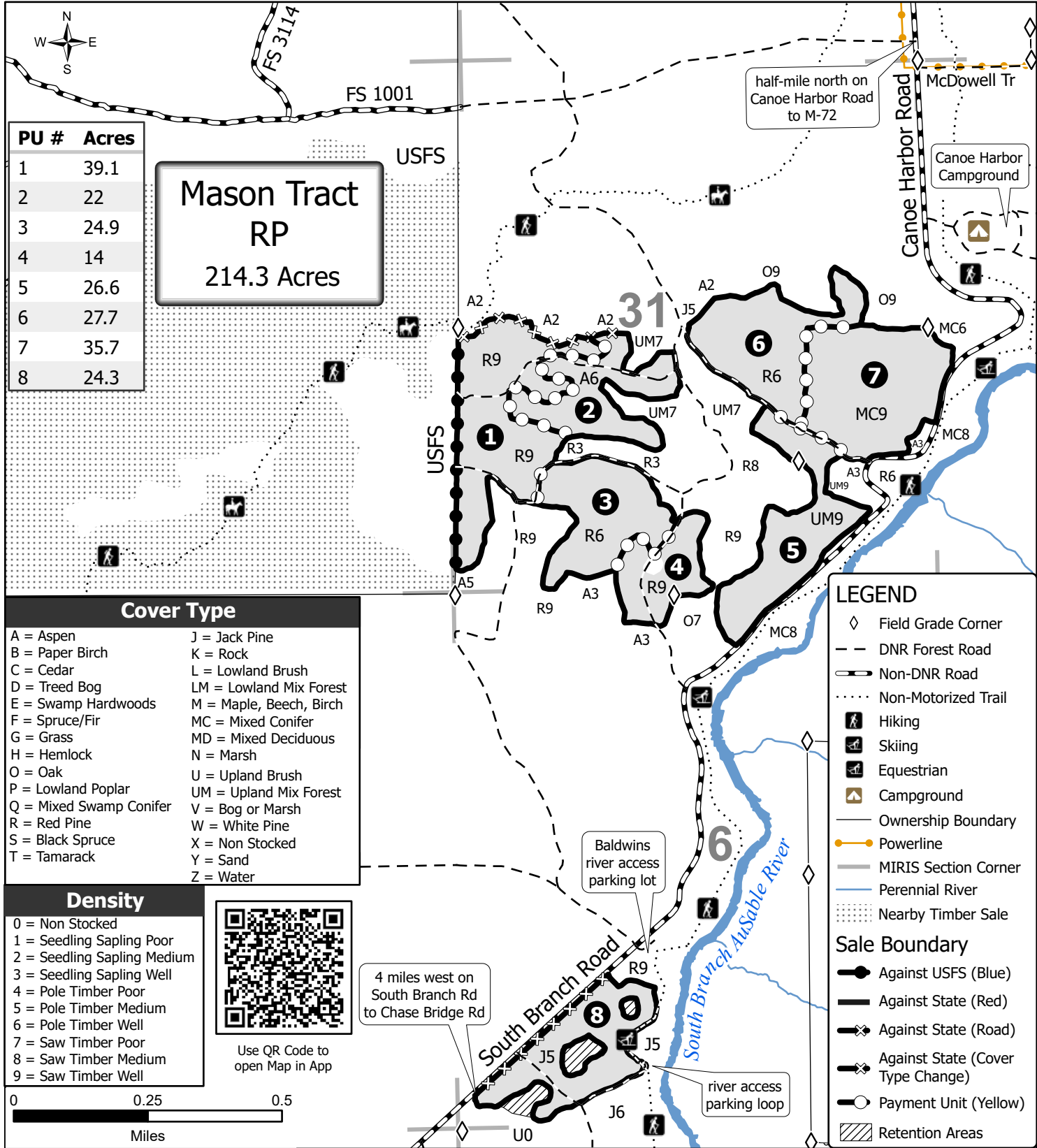
TIMBER SALE MAP

This information provided by authority of Part 525, 1994 PA 451, as amended.

Sale Number 72-023-24	Date 09/27/2024
Scale 1:15,840	Page 1
	Of 1

Forest Management Unit Grayling Mgt Unit	County Crawford	Mapped By: Charlebois Cruised By: Charlebois
---	--------------------	---

Township 25N / 26N	Range 01W	Section(s) and Subdivision(s) Sec. 31 S1/2NW,S1/2NE,SW,SE; Sec. 32 NWSW; Sec. 6 NENW,NWNE,NESW,S1/2SW;
-----------------------	--------------	--



PU #	Acres
1	39.1
2	22
3	24.9
4	14
5	26.6
6	27.7
7	35.7
8	24.3

**Mason Tract
RP
214.3 Acres**

Cover Type	
A = Aspen	J = Jack Pine
B = Paper Birch	K = Rock
C = Cedar	L = Lowland Brush
D = Treed Bog	LM = Lowland Mix Forest
E = Swamp Hardwoods	M = Maple, Beech, Birch
F = Spruce/Fir	MC = Mixed Conifer
G = Grass	MD = Mixed Deciduous
H = Hemlock	N = Marsh
O = Oak	U = Upland Brush
P = Lowland Poplar	UM = Upland Mix Forest
Q = Mixed Swamp Conifer	V = Bog or Marsh
R = Red Pine	W = White Pine
S = Black Spruce	X = Non Stocked
T = Tamarack	Y = Sand
	Z = Water

Density
0 = Non Stocked
1 = Seedling Sapling Poor
2 = Seedling Sapling Medium
3 = Seedling Sapling Well
4 = Pole Timber Poor
5 = Pole Timber Medium
6 = Pole Timber Well
7 = Saw Timber Poor
8 = Saw Timber Medium
9 = Saw Timber Well



Use QR Code to open Map in App

4 miles west on South Branch Rd to Chase Bridge Rd

Baldwins river access parking lot

river access parking loop

LEGEND	
	Field Grade Corner
	DNR Forest Road
	Non-DNR Road
	Non-Motorized Trail
	Hiking
	Skiing
	Equestrian
	Campground
	Ownership Boundary
	Powerline
	MIRIS Section Corner
	Perennial River
	Nearby Timber Sale
Sale Boundary	
	Against USFS (Blue)
	Against State (Red)
	Against State (Road)
	Against State (Cover Type Change)
	Payment Unit (Yellow)
	Retention Areas

