



# TIMBER SALE MAP

This information provided by authority of Part 525, 1994 PA 451, as amended.

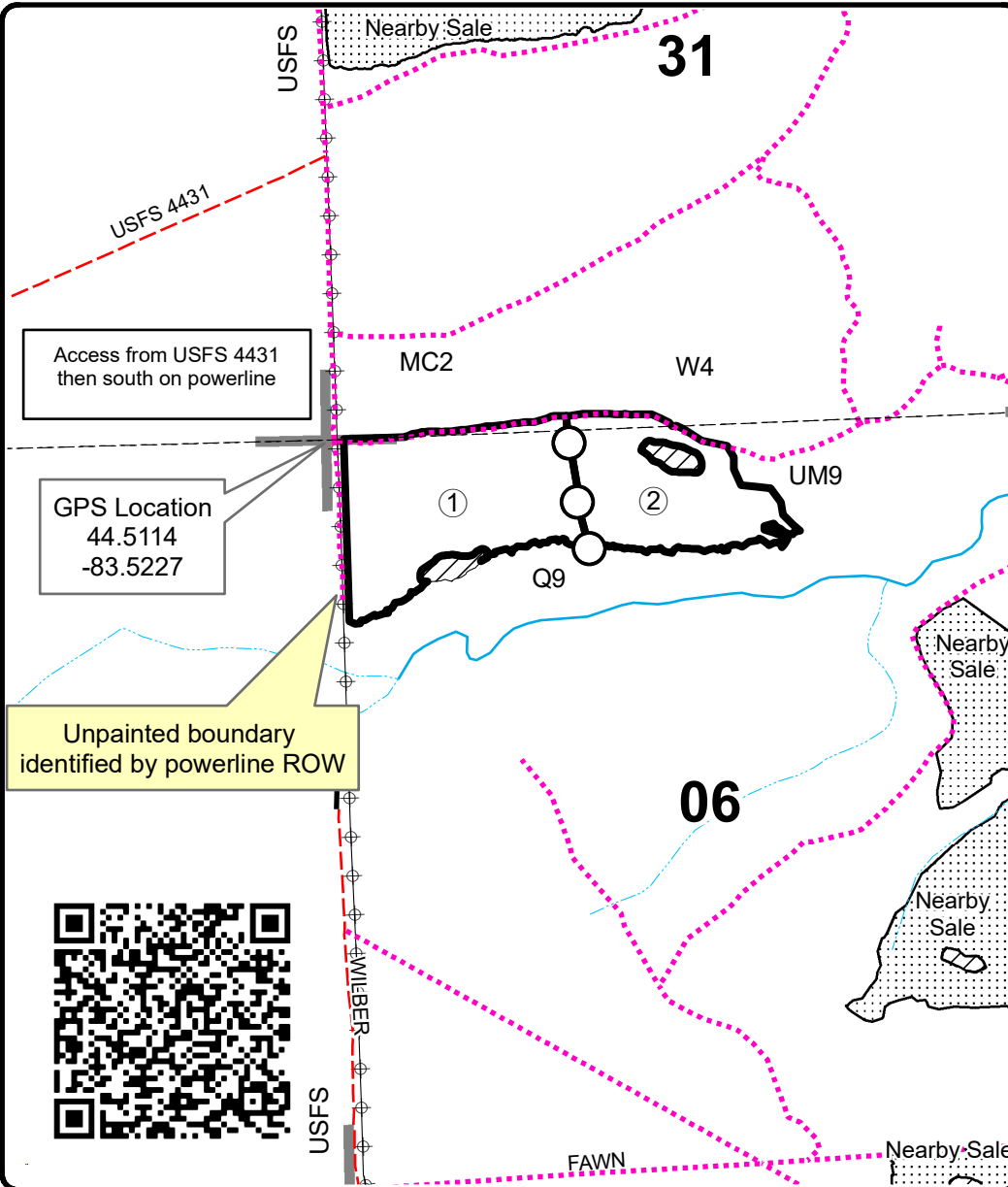
Forest Management Unit Grayling		County Iosco	Mapped By Price	Date 10/05/21	Page 1	of 1
Township 25N & 24N	Range 08E	Section(s) and Subdivision(s) 25N Sec 31 S1/2SW, 24N Sec 6 N1/2NW, NWNE		Scale 1:15,840		
<b>Cover Type</b>			<b>Density</b>			
A = Aspen	H = Hemlock	N = Marsh	U = Upland Brush	0 = Non Stocked	5 = Pole Timber Medium	
B = Paper Birch	J = Jack Pine	O = Oak	UM = Upland Mixed	1 = Seedling Sapling Poor	6 = Pole Timber Well	
C = Cedar	L = Lowland Brush	P = Lowland Poplar	V = Bog or Marsh	2 = Seedling Sapling Medium	7 = Saw Timber Poor	
D = Treed Bog	LM = Lowland Mixed	Q = Mixed Swamp Conifer	W = White Pine	3 = Seedling Sapling Well	8 = Saw Timber Medium	
E = Swamp Hdwoods	M = Mpl, Bch, Brch	R = Red Pine	X = Non Stocked	4 = Pole Timber Poor	9 = Saw Timber Well	
F = Spruce Fir	MC = Mixed Conifer	S = Black Spruce	Z = Water			
G = Grass	MD = Mixed Deciduous	T = Tamarack				

### PU Acres

1	37.3
2	24.2

## Massasauga Mix

Compartment 66  
61.5 Acres



### Legend

- Against State (Red)
- ○ Payment Unit (Yellow)
- ▨ Retention Area
- ▤ Nearby Timber Sales
- Paved Road
- - - County Road - Seasonal
- ⋯ Temporary Management Access
- ⋯ Intermittent Stream
- Perennial River
- Section Corners
- ② Payment Unit

### Locator Map 1:150,000

